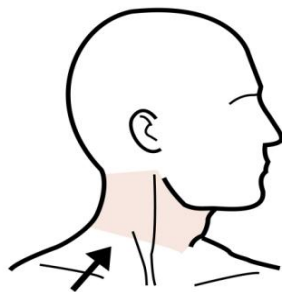
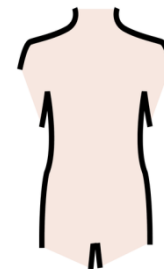


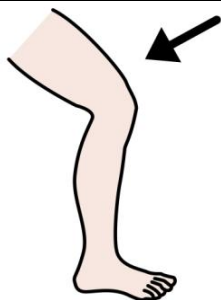
TETE



COU



TRONC



JAMBES



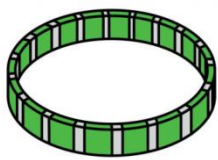
MAINS



PIEDS



MONTRE



BRACELET



BAGUE



GANT



MOUFLES



VERNIS



CHAUSSETTES



CHAUSSURES A TALON



BOTTES



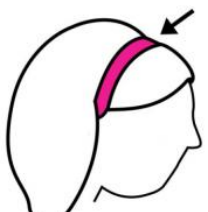
PANTOUFLES



BASKETS



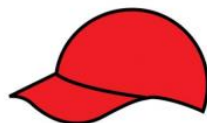
CHAUSSURES



SERRE TETE



BONNET



CASQUETTE



CHAPEAU



COURONNE



CASQUE



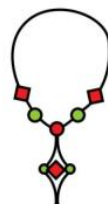
COLLIER



CRAVATE



ECHARPE



COLLIER



NOEUD PAPILLON



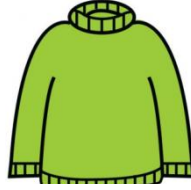
BAVOIR



MANTEAU



CHEMISE



PULL



GILET



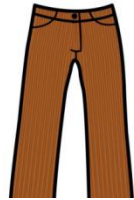
VESTE



PEIGNOIR



JUPE



PANTALON



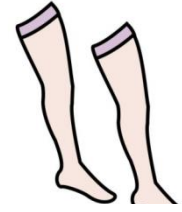
SHORT



COLLANT



MAILLOT DE BAIN



BAS