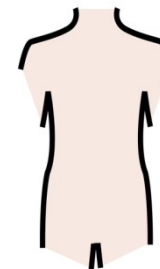


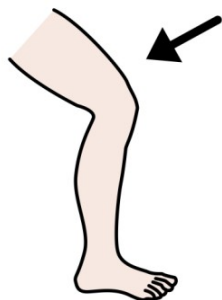
TESTA



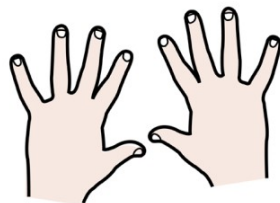
COLLO



TRONCO



GAMBE



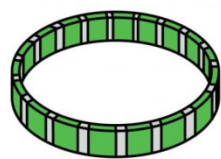
MANI



PIEDI



OROLOGIO



BRACCIALETTO



ANELLO



GUANTI



MOFFOLE



SMALTO



CALZE



SCARPE COL TACCO



STIVALI



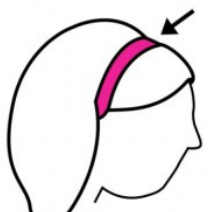
CIABATTE



SCARPE DA GINNASTICA



SCARPE



CERCHIETTO



CUFFIA



CAPPELLINO



CAPPELLO



CORONA



CASCO



COLLANA



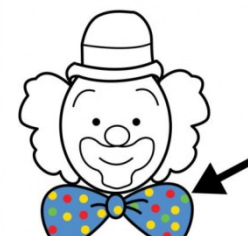
CRAVATTA



SCIARPA



COLLANA



PAPILLON



BAVAGLIA



CAPPOTTO



CAMICIA



MAGLIONE



GILET



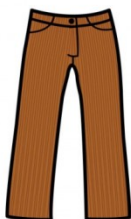
FELPA



ACCAPPATOIO



GONNA



PANTALONI



BERMUDA



CALZAMAGLIA



COSTUME



CALZETTONI