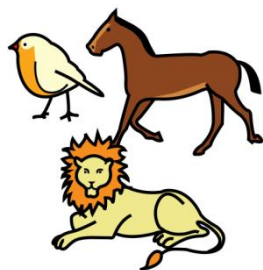


INDOVINELLI

GLI ANIMALI DELLA FATTORIA



AUTOR: María José de Luis Flores. Maestra especialista en
Audición y Lenguaje-Psicopedagoga. Autora del blog
<http://lapsico-goloteca.blogspot.com.es> LICENCIA CC (BY-NC-SA)

Autor pictogramas: Sergio Palao. Procedencia, bajo licencia
de Creative Commons: ARASAAC

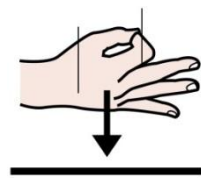




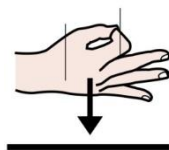
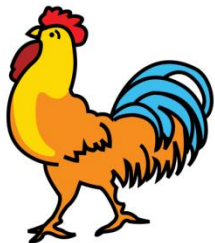
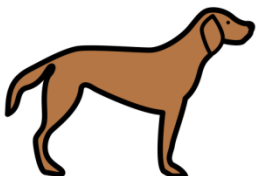
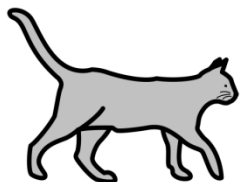
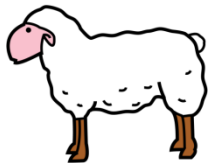
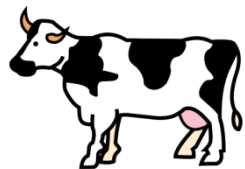
QUALE



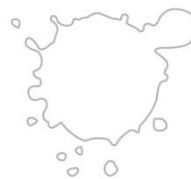
ANIMALE



SONO?



SONO



BIANCA



NERA



HO



LE CORNA

4



QUATTRO

4s



ZAMPE

E

E



DO



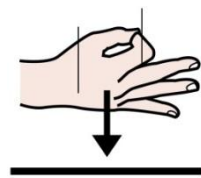
IL LATTE



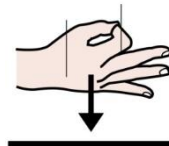
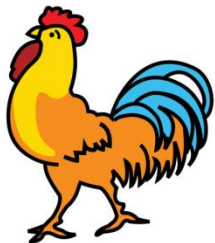
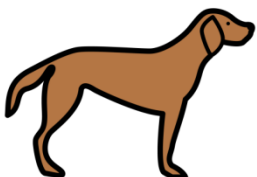
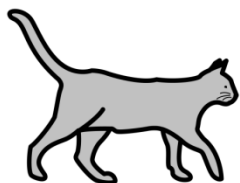
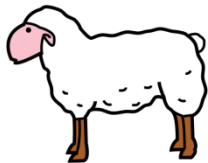
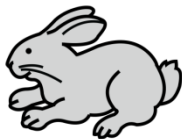
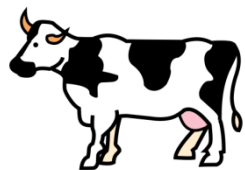
QUALE



ANIMALE



SONO?



SONO



BIANCA



HO



LE PIUME

E



DUE



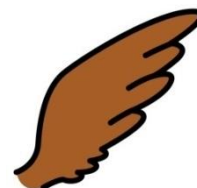
ZAMPE



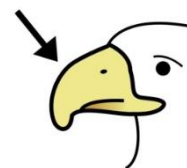
HO



LA CRESTA



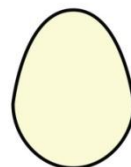
LE ALI



IL BECCO



FACCIO



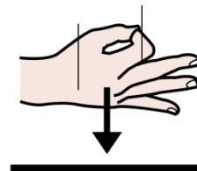
LE UOVA



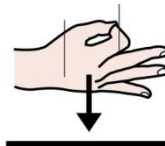
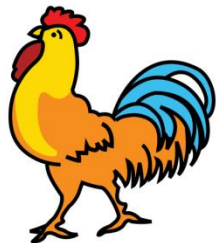
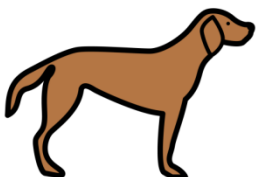
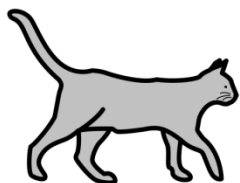
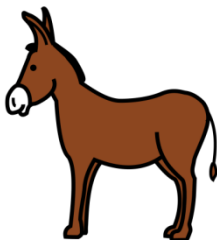
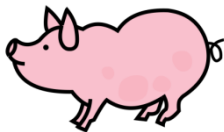
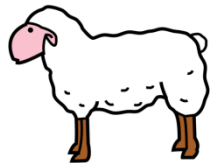
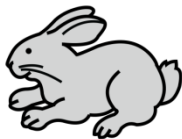
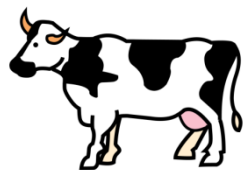
QUALE



ANIMALE



SONO?



SONO



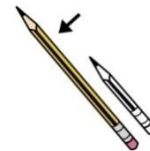
GRIGIO



HO

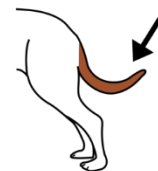


LE ORECCHIE

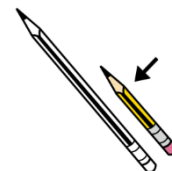


LUNGHE

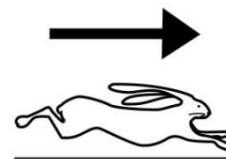
y



LA CODA CORTA



CAMMINO



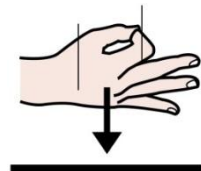
MOLTO
VELOCE



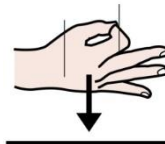
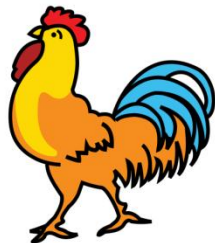
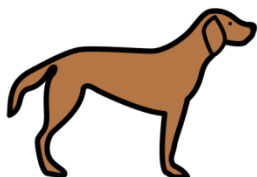
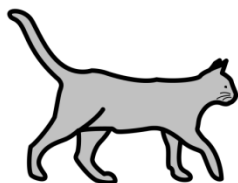
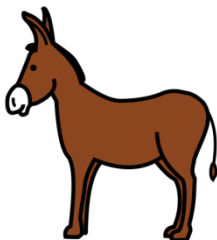
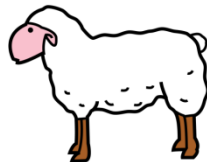
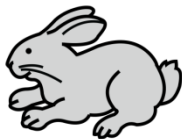
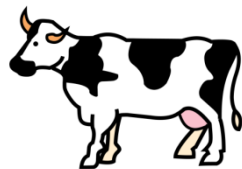
QUALE



ANIMALE



SONO?



SONO



E

BIANCA



ARRICCIATO



HO



IL MANTO



HO



4

QUATTRO



+s

ZAMPE



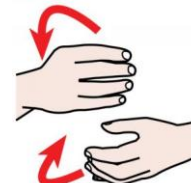
DO



LA LANA



PER



FARE



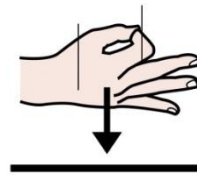
LE
MAGLIE



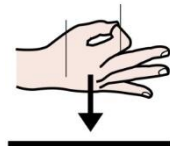
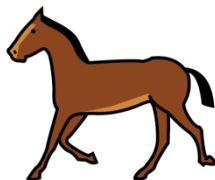
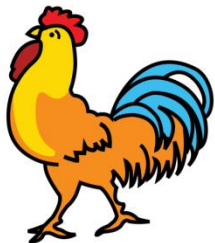
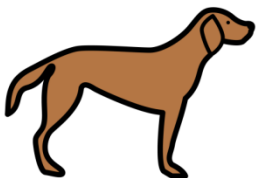
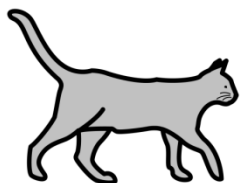
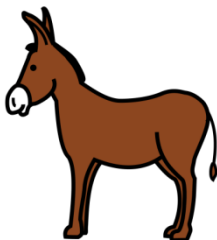
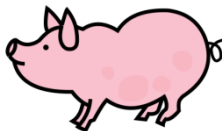
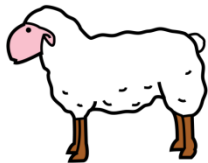
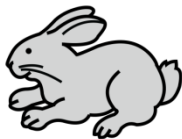
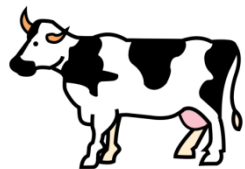
QUALE



ANIMALE



SONO?



SONO



ROSA

E



GRASSO



LA



CODA



ARRICCIATA

+s

HO



HO

4



QUATTRO



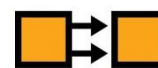
ZAMPE



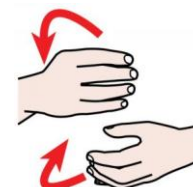
DO



LA
CARNE



PER



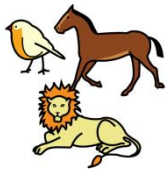
FARE



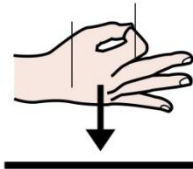
GLI
INSACCATI



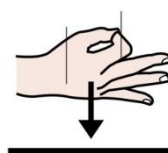
QUALE



ANIMALE



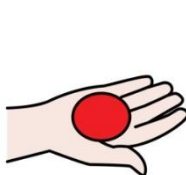
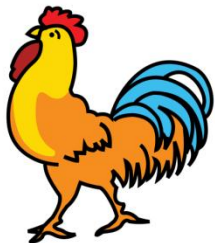
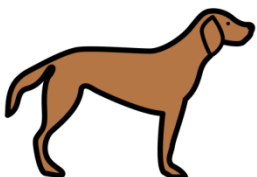
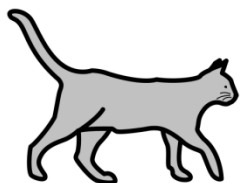
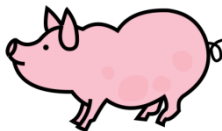
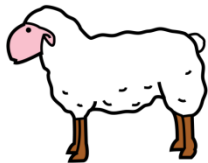
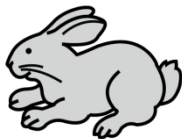
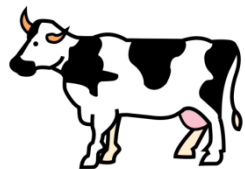
SONO?



SONO



GRIGIO



HO



HO

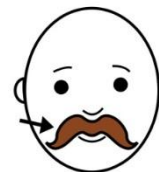
E



MI PIACE



QUATTRO



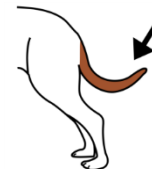
I BAFFI



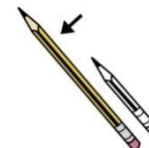
LE ORECCHIE



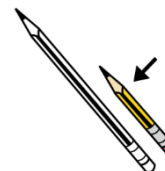
ZAMPE



LA CODA



LUNGA



CORTE



CACCIARE



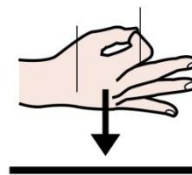
I TOPI



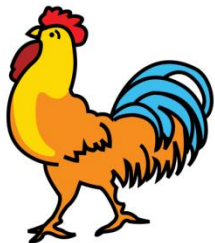
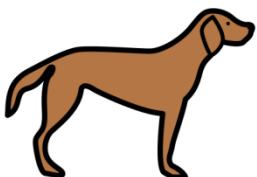
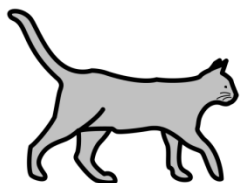
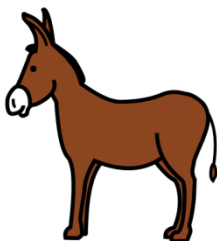
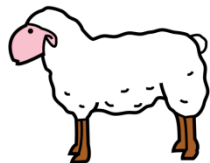
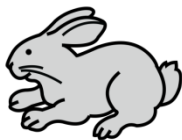
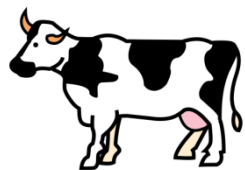
QUALE



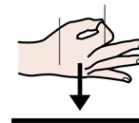
ANIMALE



SONO?



IL MIO MANTO



E'



LUNGO

E



MARRONE



HO



QUATTRO



ZAMPE



MI PIACE



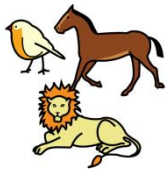
MANGIARE



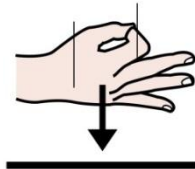
LE OSSA



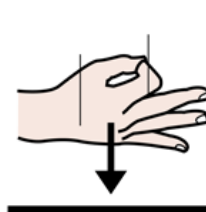
QUALE



ANIMALE



SONO?

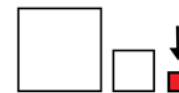


SONO

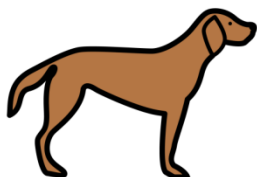
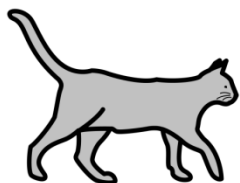
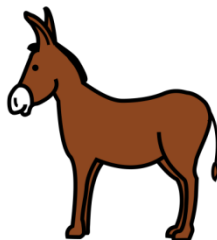
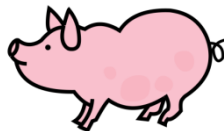
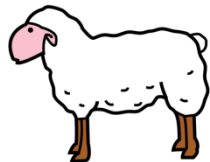
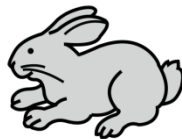
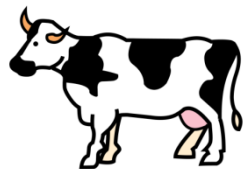


GIALLO

E



PICCOLO



HO



IL BECCO

E



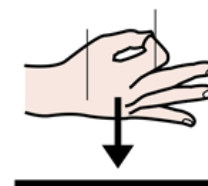
LE ALI



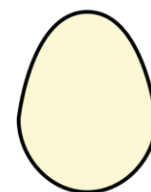
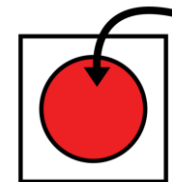
PERO'



NON POSSO VOLARE



SONO DENTRO



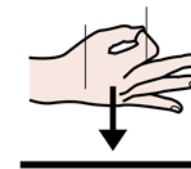
L'UOVO



MIA



MAMMA



E'

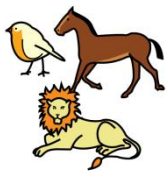
LA



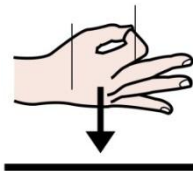
GALLINA



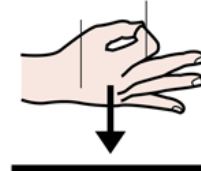
QUALE



ANIMALE



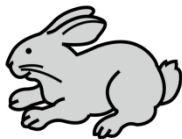
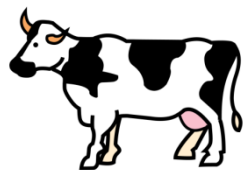
SONO?



SONO



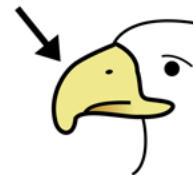
MASCHIO



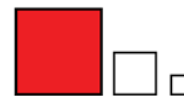
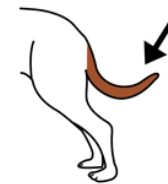
HO



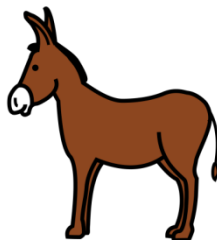
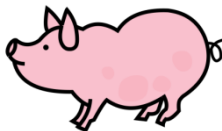
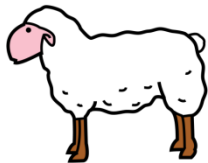
LA CRESTA



IL BECCO



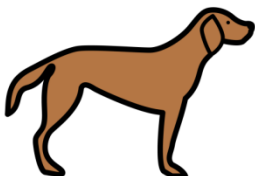
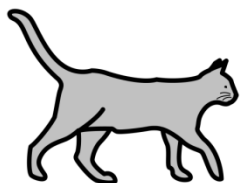
LA CODA GRANDE



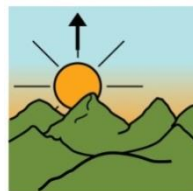
E



LE PIUME

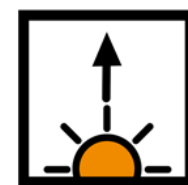


CANTO

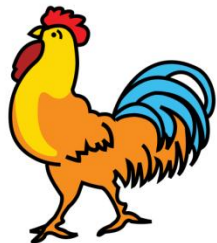


LA MATTINA

QUANDO



SALE



IL SOLE



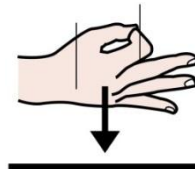
NON FACCIO LE UOVA



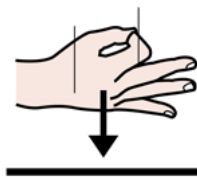
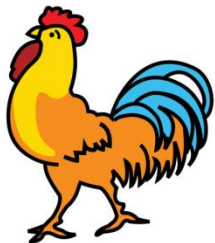
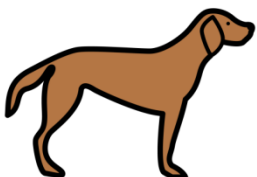
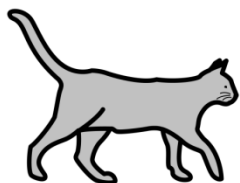
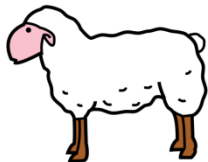
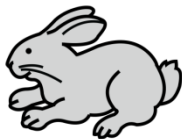
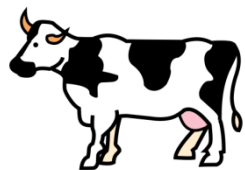
QUALE



ANIMALE



SONO?



SONO



MARRONE

E



HO



LE CORNA



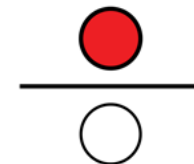
POSSO



SALTARE



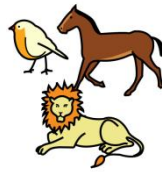
MOLTO



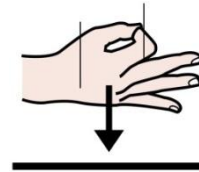
ALTO



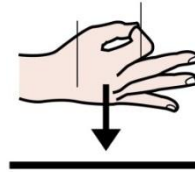
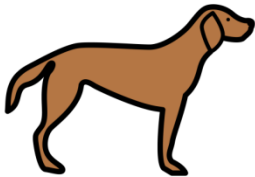
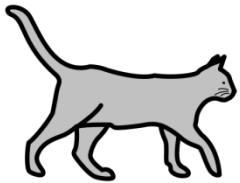
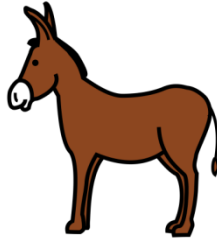
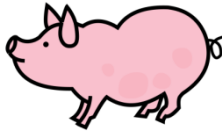
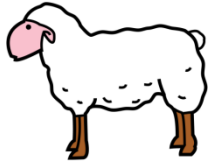
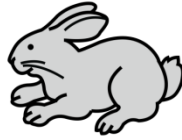
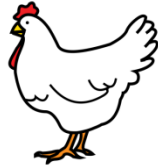
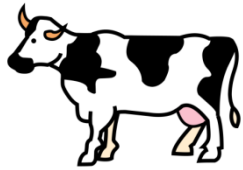
QUALE



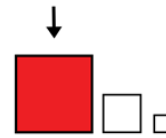
ANIMALE



SONO?



SONO

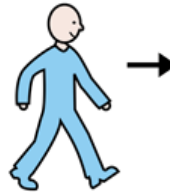


GRANDE

E



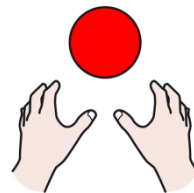
MARRONE



VADO



AL GALOPPO

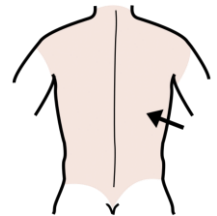


POSSONO



MONTARE

SULLA MIA



SCHIENA