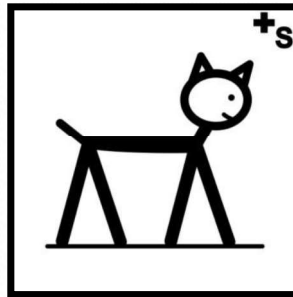


A large, irregular orange watercolor splash or blotch serves as a background for the title. It has a textured, painterly appearance with some darker orange areas and lighter, more translucent edges. The splash is centered on the page.

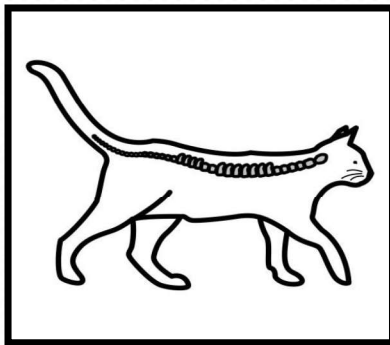
# O REINO ANIMAL

Autor: Andrea Mendieta Araya Traducido por: Alba Alcázar Villaverde Autor pictogramas: Sergio Palao. Procedencia: ARASAAC (<http://arasaac.org>) Licencia: CC (BY-NC-SA)

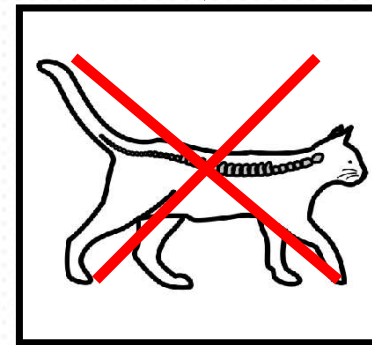
# OS ANIMAIS CLASIFÍCANSE EN



VERTEBRADOS



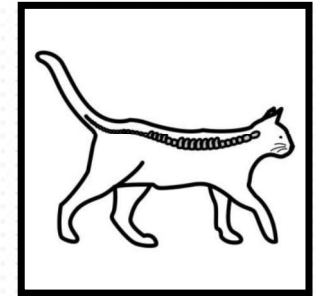
INVERTEBRADOS



Autor: Andrea Mendieta Araya

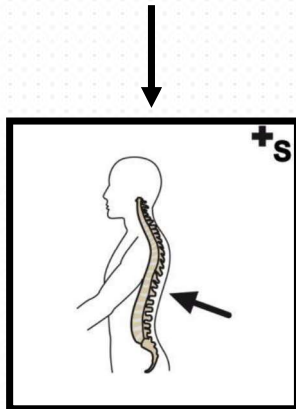
Autor pictogramas: Sergio Palao. Procedencia: ARASAAC (<http://arasaac.org> Licencia: CC (BY-NC-SA))

# OS ANIMAIS VERTEBRADOS

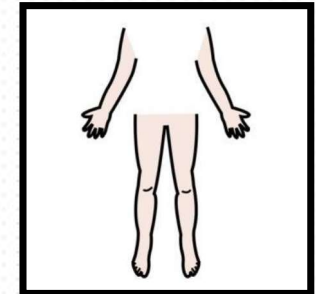
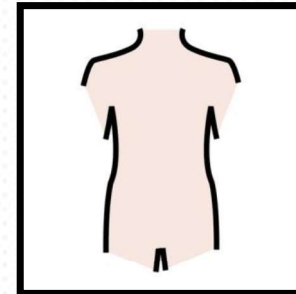
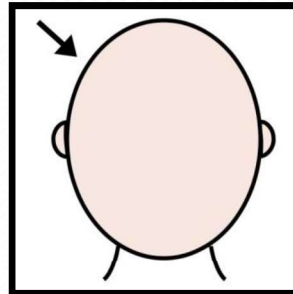


## CARACTERÍSTICAS:

TEÑEN COLUMNA VERTEBRAL



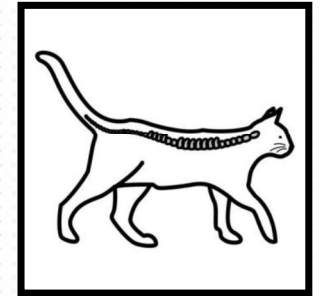
O CORPO ESTÁ DIVIDIDO EN  
CABEZA - TRONCO - EXTREMIDADES



Autor: Andrea Mendieta Araya

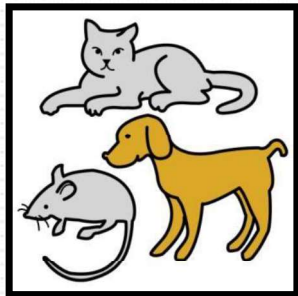
Autor pictogramas: Sergio Palao. Procedencia: ARASAAC (<http://arasaac.org>) Licencia: CC (BY-NC-SA)

# OS ANIMAIS VERTEBRADOS

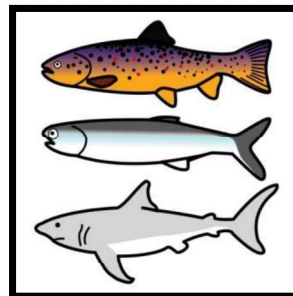


## CLASIFICACIÓN:

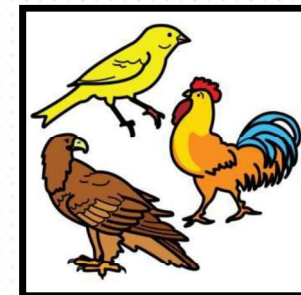
### MAMÍFEROS



### PECES



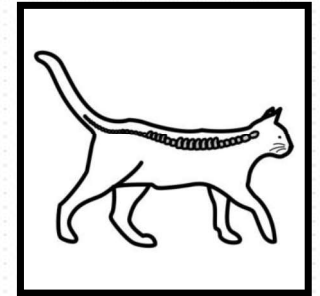
### AVES



Autor: Andrea Mendieta Araya

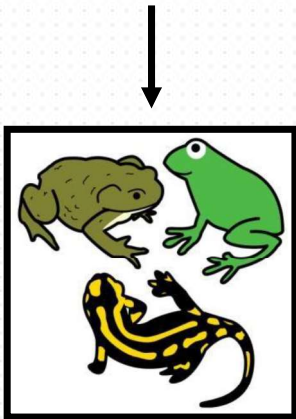
Autor pictogramas: Sergio Palao. Procedencia: ARASAAC (<http://arasaac.org>) Licencia: CC (BY-NC-SA)

# OS ANIMAIS VERTEBRADOS

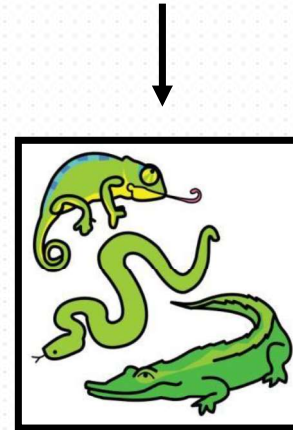


## CLASIFICACIÓN:

### ANFIBIOS



### REPTILES



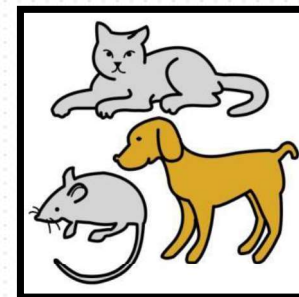
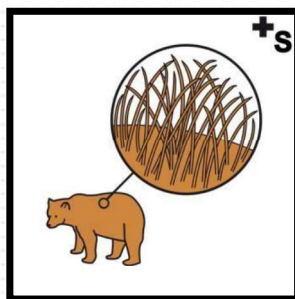
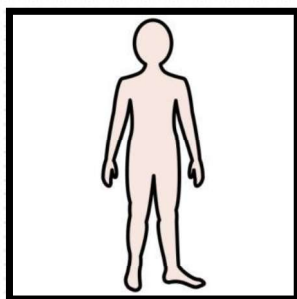
Autor: Andrea Mendieta Araya

Autor pictogramas: Sergio Palao. Procedencia: ARASAAC (<http://arasaac.org>) Licencia: CC (BY-NC-SA)

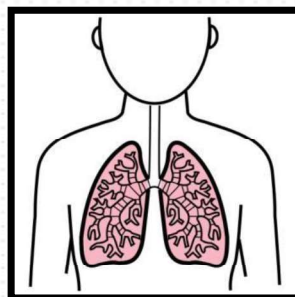
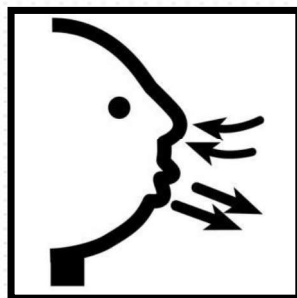


# MAMÍFEROS

TEÑEN O CORPO CUBERTO DE PELOS



RESPIRAN POLOS PULMÓNS TOMANDO O OSÍXENO DO AIRE

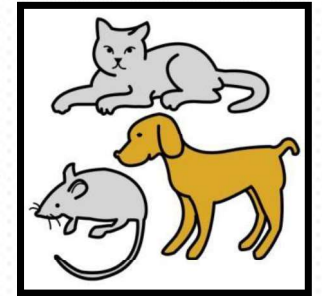
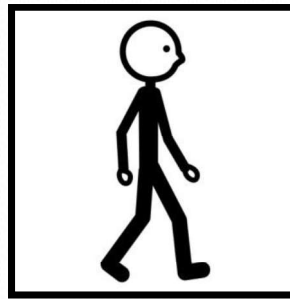
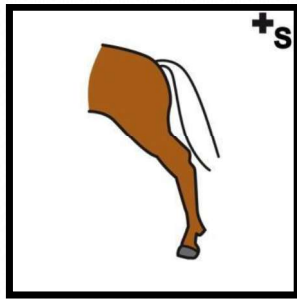


Autor: Andrea Mendieta Araya

Autor pictogramas: Sergio Palao. Procedencia: ARASAAC (<http://arasaac.org>) Licencia: CC (BY-NC-SA)

# MAMÍFEROS

**AS SÚAS EXTREMIDADES TEÑEN FORMA DE PATAS QUE LLES PERMITEN DESPRAZARSE**



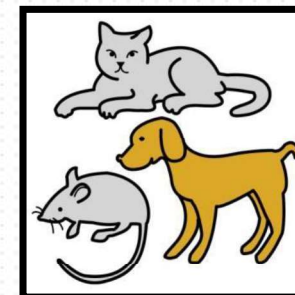
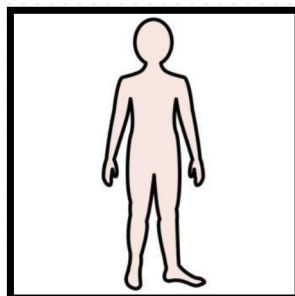
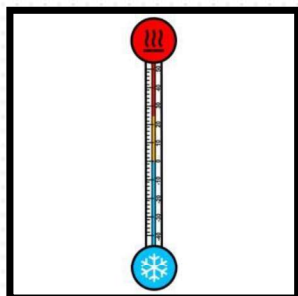
**OS MAMÍFEROS VOLADORES POSEEN MENBRANAS E OS MAMÍFEROS ACUÁTICOS POSEEN ALETAS**

Autor: Andrea Mendieta Araya

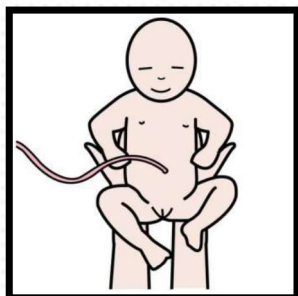
Autor pictogramas: Sergio Palao. Procedencia: ARASAAC (<http://arasaac.org>) Licencia: CC (BY-NC-SA)

# MAMÍFEROS

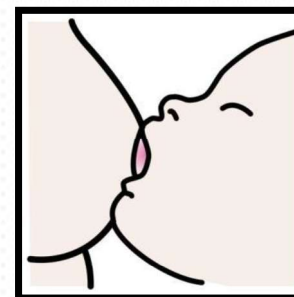
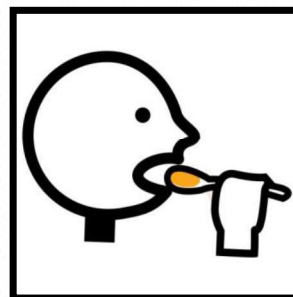
A TEMPERATURA CORPORAL É CONSTANTE



SON VIVÍPAROS (NACEN DA SÚA NAI)



ALIMÉNTANSE DE LEITE MATERNA

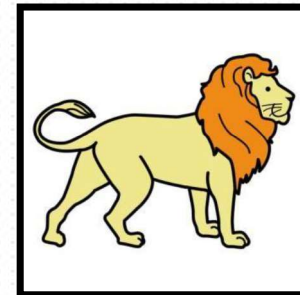
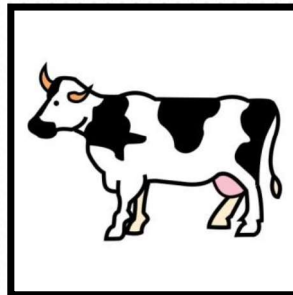
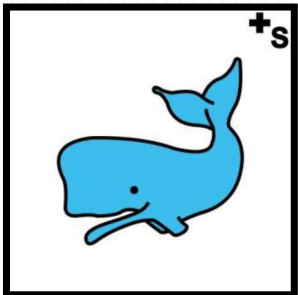
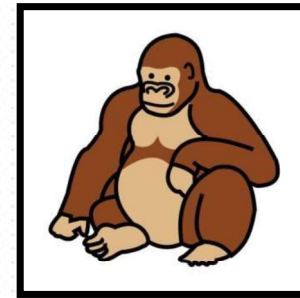
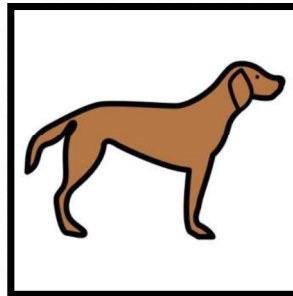
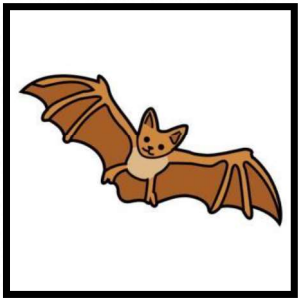
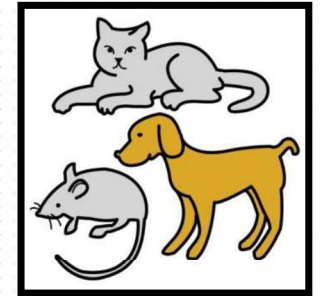


Autor: Andrea Mendieta Araya

Autor pictogramas: Sergio Palao. Procedencia: ARASAAC (<http://arasaac.org>) Licencia: CC (BY-NC-SA)



# MAMÍFEROS

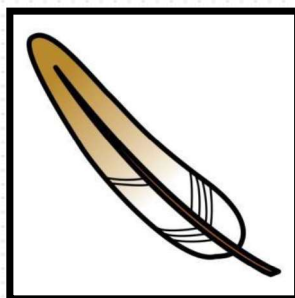
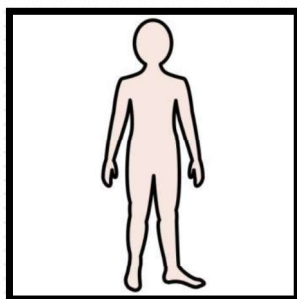


Autor: Andrea Mendieta Araya

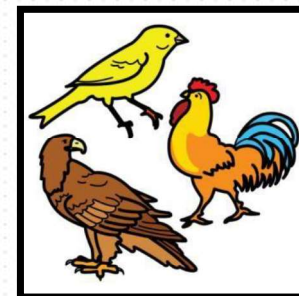
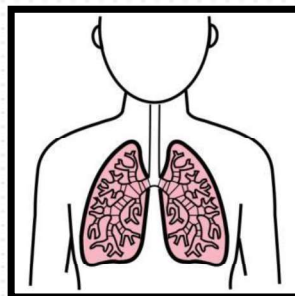
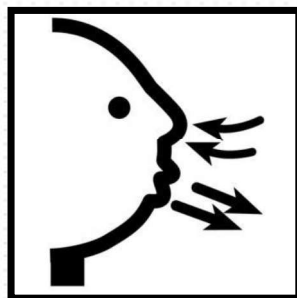
Autor pictogramas: Sergio Palao. Procedencia: ARASAAC (<http://arasaac.org>) Licencia: CC (BY-NC-SA)

# AVES

TEÑEN O SEU CORPO CUBERTO DE PLUMAS



RESPIRAN POLOS PULMÓNS TOMANDO O OSÍXENO DO AIRE

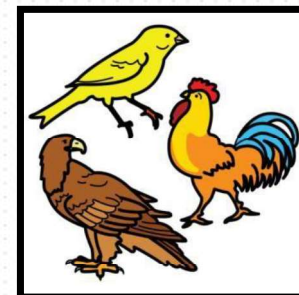
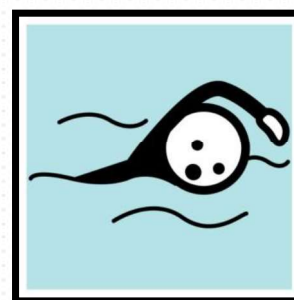
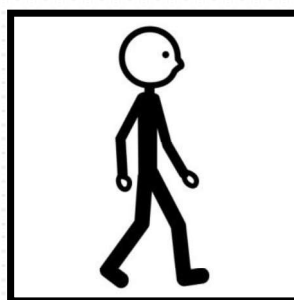
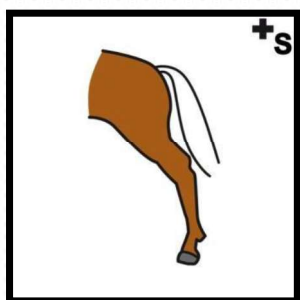
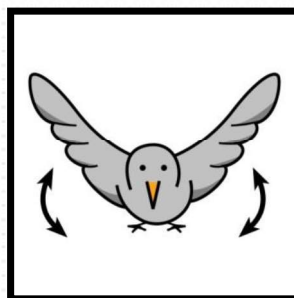
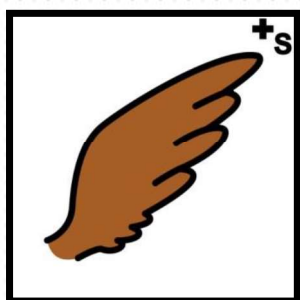


Autor: Andrea Mendieta Araya

Autor pictogramas: Sergio Palao. Procedencia: ARASAAC (<http://arasaac.org>) Licencia: CC (BY-NC-SA)

# AVES

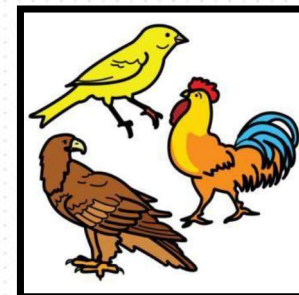
AS SÚAS EXTREMIDADES ANTERIORES TEÑEN FORMA DE ÁS E AS INFERIORES TEÑEN FORMA DE PATAS QUE LLES PERMITEN DESPRAZARSE



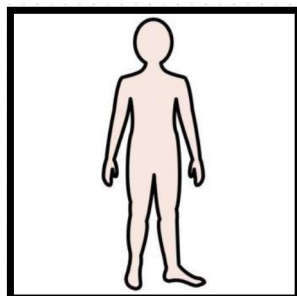
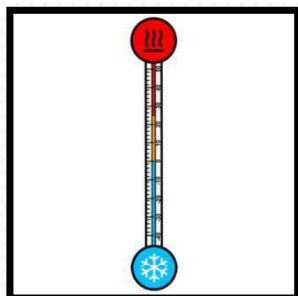
Autor: Andrea Mendieta Araya

Autor pictogramas: Sergio Palao. Procedencia: ARASAAC (<http://arasaac.org>) Licencia: CC (BY-NC-SA)

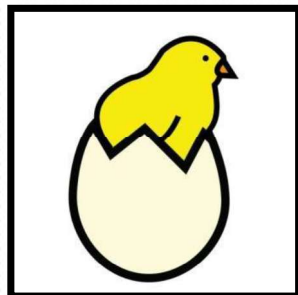
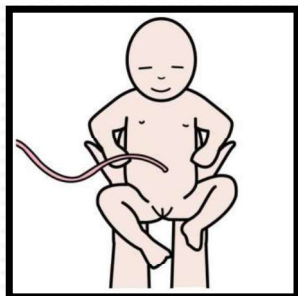
# AVES



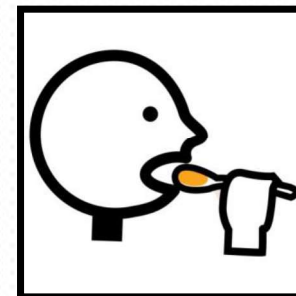
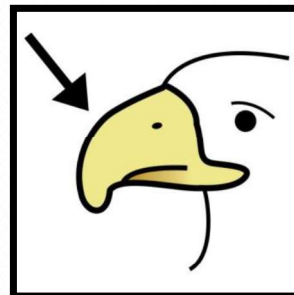
**A TEMPERATURA CORPORAL É CONSTANTE**



**SON OVÍPAROS (NACEN DE OVOS)**



**TEÑEN PICO PARA ALIMENTARSE**

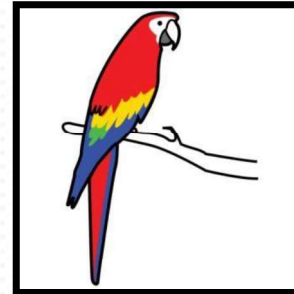
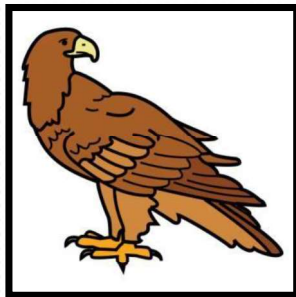
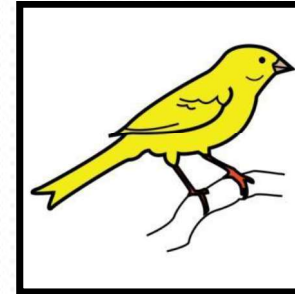
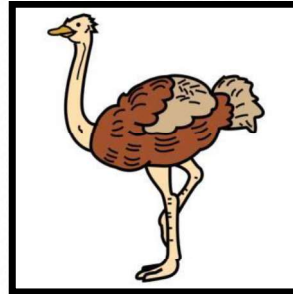
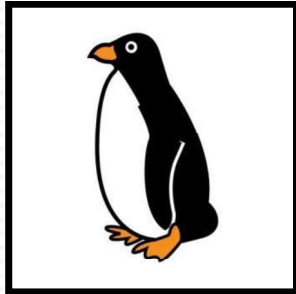
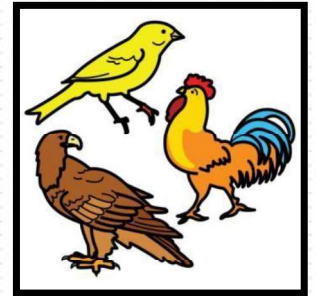


Autor: Andrea Mendieta Araya

Autor pictogramas: Sergio Palao. Procedencia: ARASAAC (<http://arasaac.org>) Licencia: CC (BY-NC-SA)



# AVES



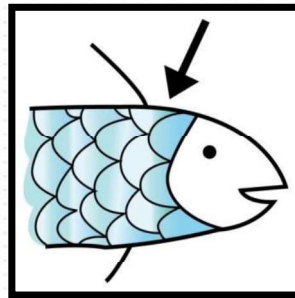
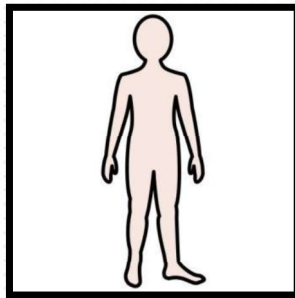
Autor: Andrea Mendieta Araya

Autor pictogramas: Sergio Palao. Procedencia: ARASAAC (<http://arasaac.org>) Licencia: CC (BY-NC-SA)

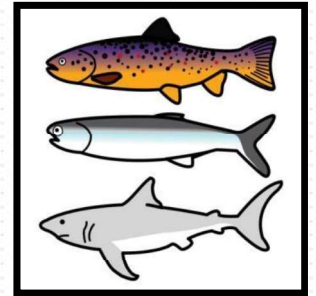
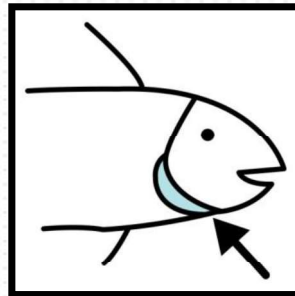
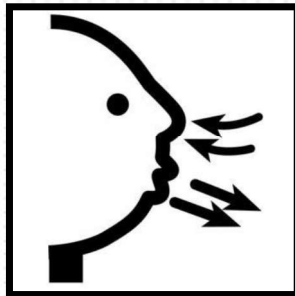


# PECES

TEÑEN O SEU CORPO CUBERTO DE ESCAMAS



RESPIRAN POR BRANQUIAS TOMANDO O OSÍXENO DISOLTO NA AGUA

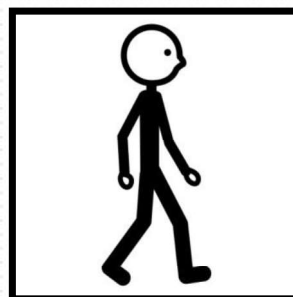
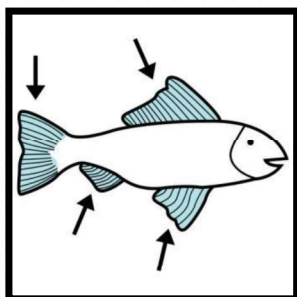
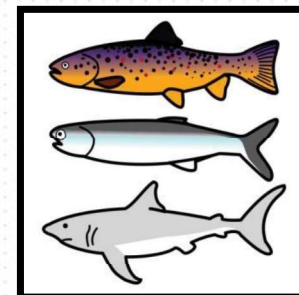


Autor: Andrea Mendieta Araya

Autor pictogramas: Sergio Palao. Procedencia: ARASAAC (<http://arasaac.org>) Licencia: CC (BY-NC-SA)

# PECES

**AS SÚAS EXTREMIDADES TEÑEN FORMA DE ALETAS, O SEU CORPO TERMINA NUNHA ALETA MÁIS FORTE QUE FORMA A COLA**

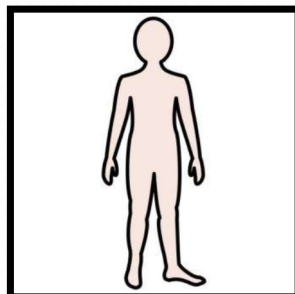
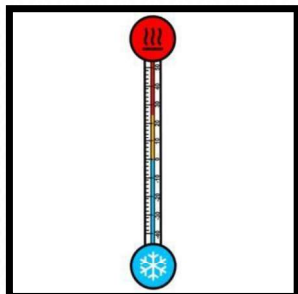
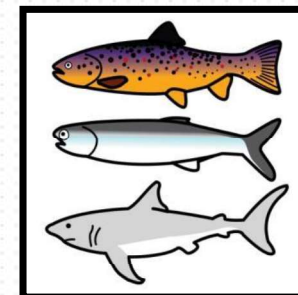


Autor: Andrea Mendieta Araya

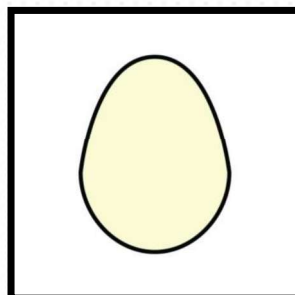
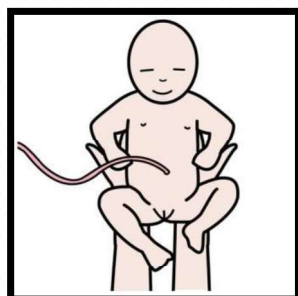
Autor pictogramas: Sergio Palao. Procedencia: ARASAAC (<http://arasaac.org>) Licencia: CC (BY-NC-SA)

# PECES

**A TEMPERATURA CORPORAL É VARIABLE SEGUNDO A  
TEMPERATURA DA AGUA**



**SON OVÍPAROS (NACEN DOS ÓVOS)**

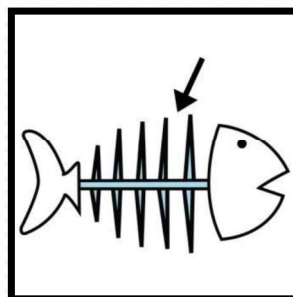
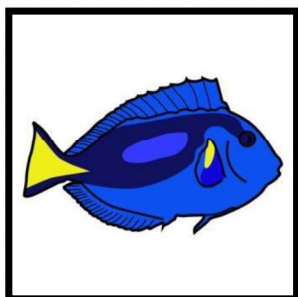
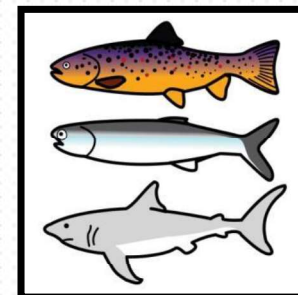


Autor: Andrea Mendieta Araya

Autor pictogramas: Sergio Palao. Procedencia: ARASAAC (<http://arasaac.org>) Licencia: CC (BY-NC-SA)

# PECES

O SEU ESQUELETO É O MÁIS SINXELO DOS VERTEBRADOS.  
MOITOS TEÑEN UN ESQUELETO ÓSEO CON FORMA DE  
ESPINAS

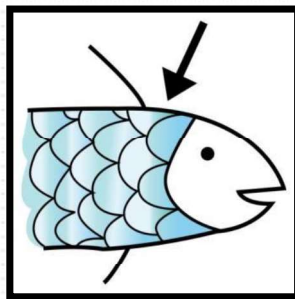
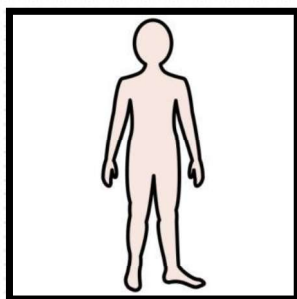


Autor: Andrea Mendieta Araya

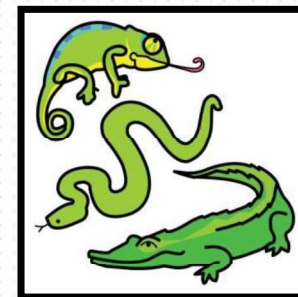
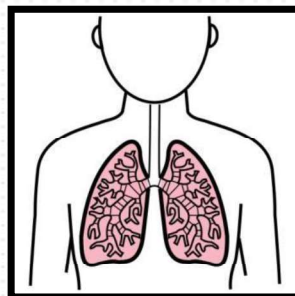
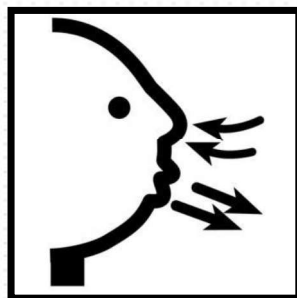
Autor pictogramas: Sergio Palao. Procedencia: ARASAAC (<http://arasaac.org>) Licencia: CC (BY-NC-SA)

# RÉPTILES

TEÑEN O SEU CORPO CUBERTO DE ESCAMAS



RESPIRAN POLOS PULMÓNSS TOMANDO O OSÍXENO DO AIRE



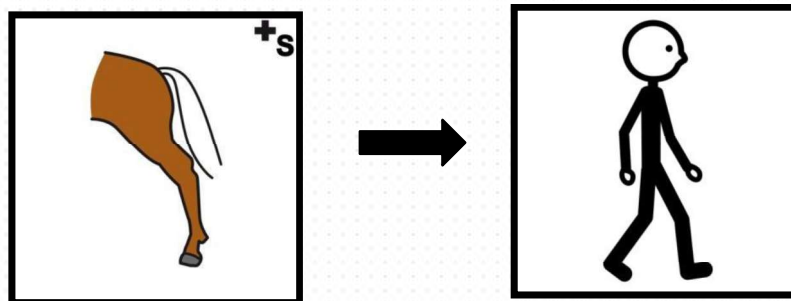
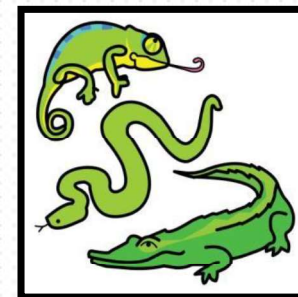
Autor: Andrea Mendieta Araya

Autor pictogramas: Sergio Palao. Procedencia: ARASAAC (<http://arasaac.org>) Licencia: CC (BY-NC-SA)

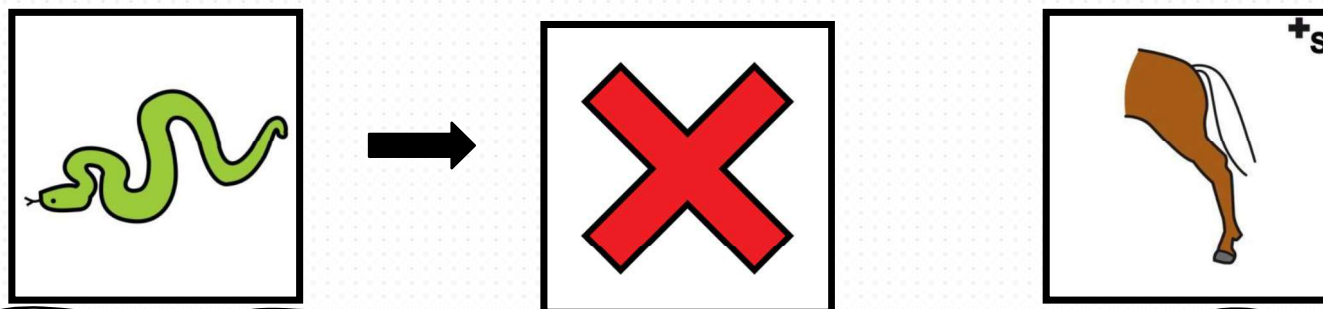


# RÉPTILES

AS SÚAS EXTREMIDADES TEÑEN FORMA DE PATAS E TENDEN A SER CURTAS



ALGÚNS RÉPTILES COMO A SERPE NO TEÑEN PATAS

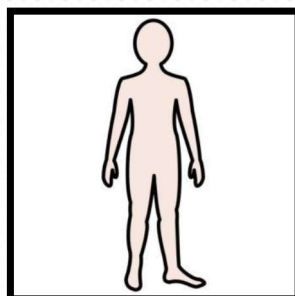
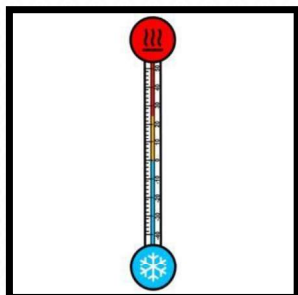
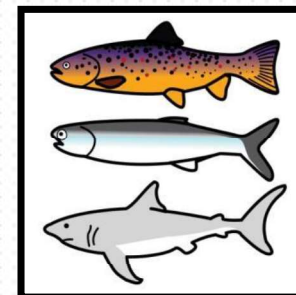


Autor: Andrea Mendieta Araya

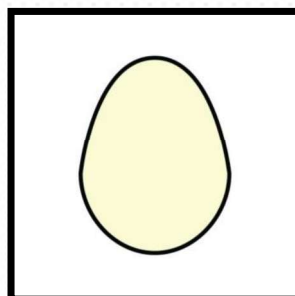
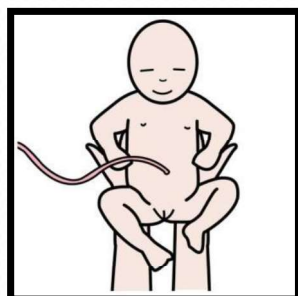
Autor pictogramas: Sergio Palao. Procedencia: ARASAAC (<http://arasaac.org>) Licencia: CC (BY-NC-SA)

# PECES

A TEMPERATURA CORPORAL É VARIABLE



SON OVÍPAROS (NACEN DOS OVOS)

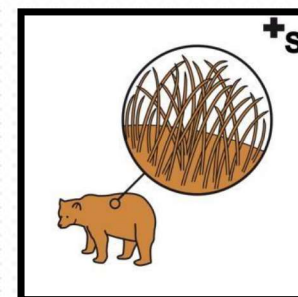
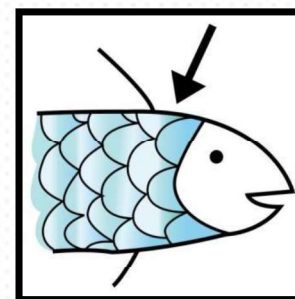
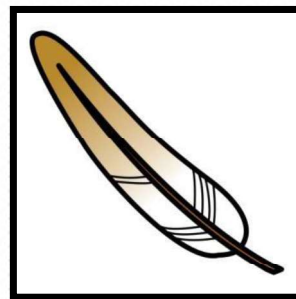
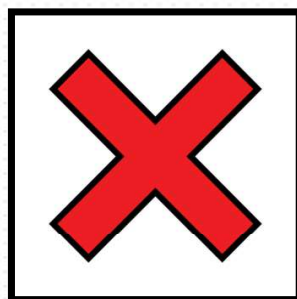
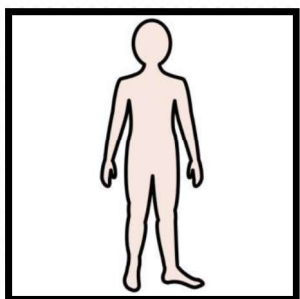
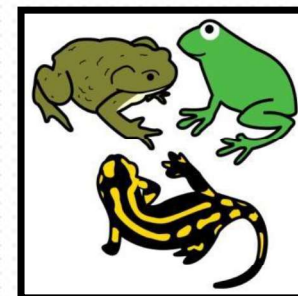


Autor: Andrea Mendieta Araya

Autor pictogramas: Sergio Palao. Procedencia: ARASAAC (<http://arasaac.org>) Licencia: CC (BY-NC-SA)

# ANFIBIOS

A SÚA PEL ESTÁ ESPIDA E HÚMIDA

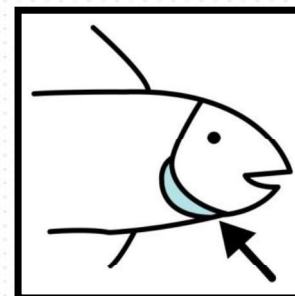
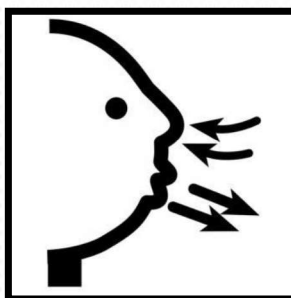
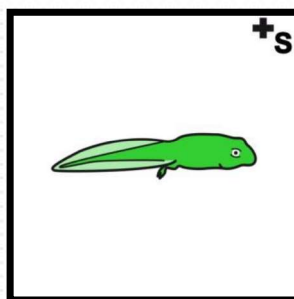
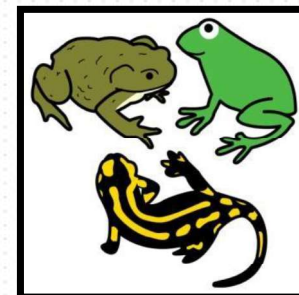


Autor: Andrea Mendieta Araya

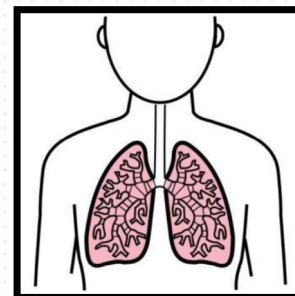
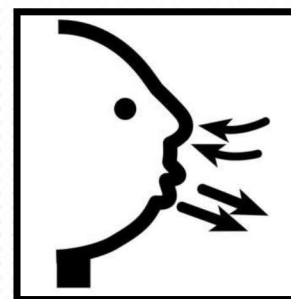
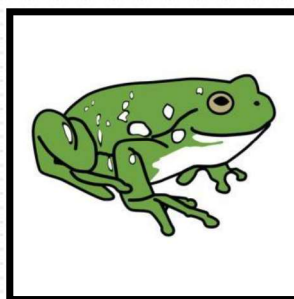
Autor pictogramas: Sergio Palao. Procedencia: ARASAAC (<http://arasaac.org>) Licencia: CC (BY-NC-SA)

# ANFIBIOS

AS CRÍAS NACEN NA AGUA E RESPIRAN POLAS BRANQUIAS



OS ADULTOS VIVEN NA TERRA E NA AGUA E RESPIRAN POLA PEL E OS PULMÓNS

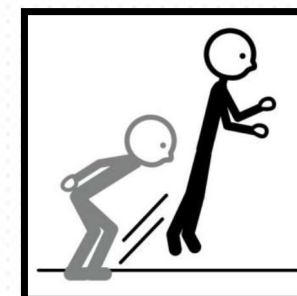
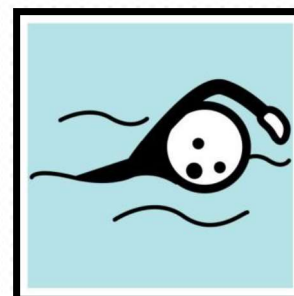
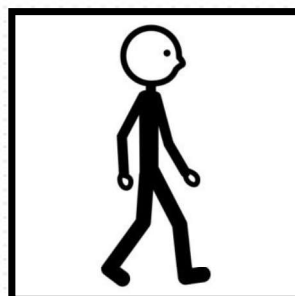
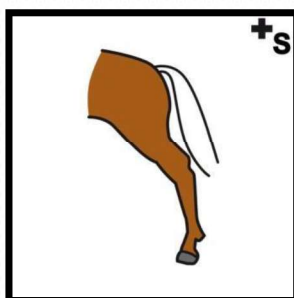
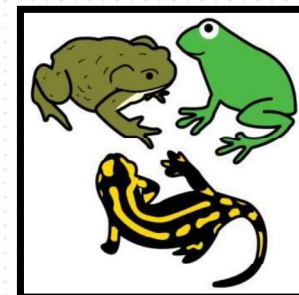


Autor: Andrea Mendieta Araya

Autor pictogramas: Sergio Palao. Procedencia: ARASAAC (<http://arasaac.org>) Licencia: CC (BY-NC-SA)

# ANFIBIOS

**AS SÚAS EXTREMIDADES SON PATAS MUSCULOSAS  
QUE LLES PERMITEN NADAR E SALTAR**



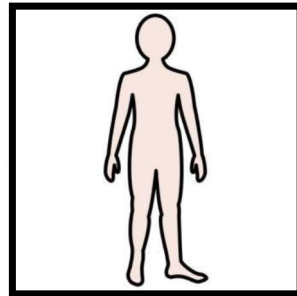
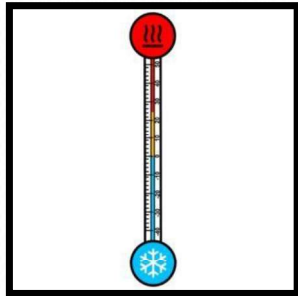
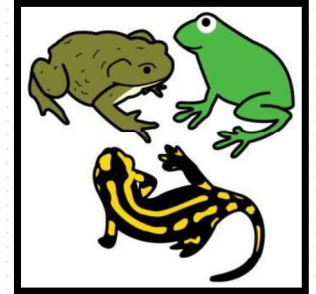
Autor: Andrea Mendieta Araya

Autor pictogramas: Sergio Palao. Procedencia: ARASAAC (<http://arasaac.org>) Licencia: CC (BY-NC-SA)

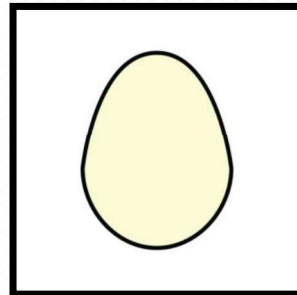
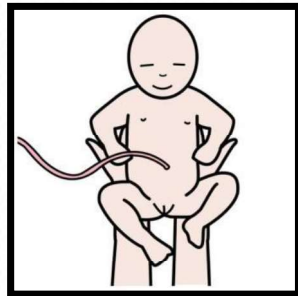


# ANFIBIOS

A TEMPERATURA CORPORAL É VARIABLE



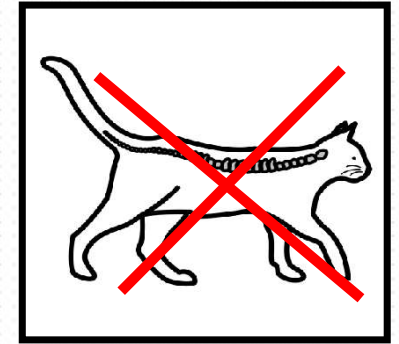
SON OVÍPAROS (NACEN DOS ÓVOS)



Autor: Andrea Mendieta Araya

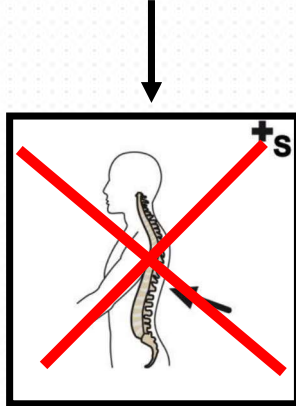
Autor pictogramas: Sergio Palao. Procedencia: ARASAAC (<http://arasaac.org>) Licencia: CC (BY-NC-SA)

# OS ANIMAIS INVERTEBRADOS

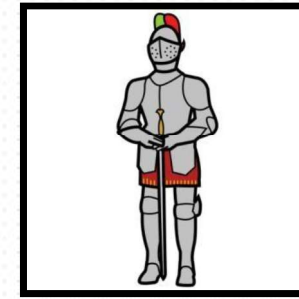
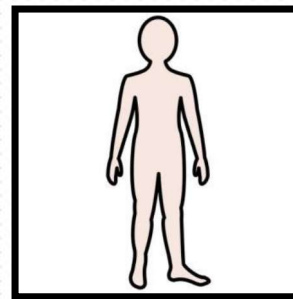


## CARACTERÍSTICAS:

NON TEÑEN COLUMNA VERTEBRAL



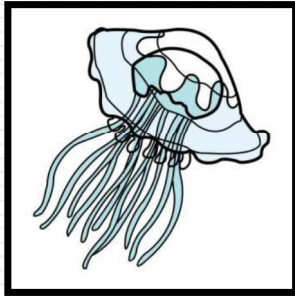
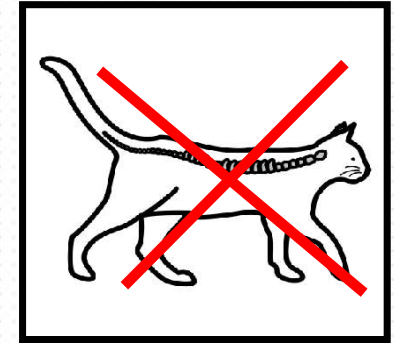
TEÑEN UNHA PROTECCIÓN EXTERNA  
COMO SI FORA UNHA ARMADURA



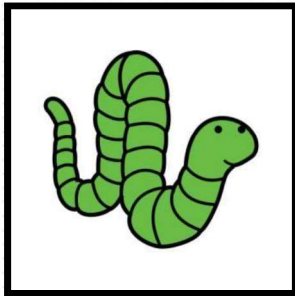
Autor: Andrea Mendieta Araya

Autor pictogramas: Sergio Palao. Procedencia: ARASAAC (<http://arasaac.org>) Licencia: CC (BY-NC-SA)

# OS ANIMAIS INVERTEBRADOS



**MEDUSAS; TEÑEN LONGOS TENTÁCULOS; CON PEQUENOS AGULLAS COAS QUE CAZAN E PRODUCEN PICADURAS**

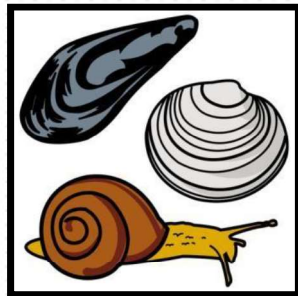
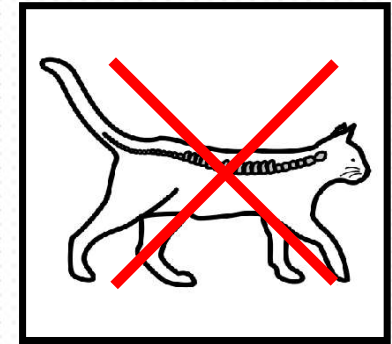


**GUSANOS; SON BLANDOS E ALONGADOS, ARRASTRAN O SEU CORPO**

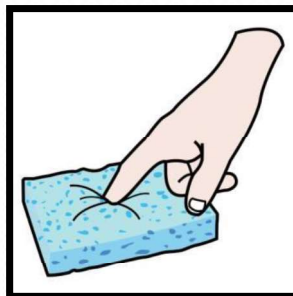
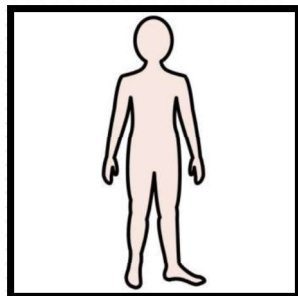
Autor: Andrea Mendieta Araya

Autor pictogramas: Sergio Palao. Procedencia: ARASAAC (<http://arasaac.org>) Licencia: CC (BY-NC-SA)

# OS ANIMAIS INVERTEBRADOS



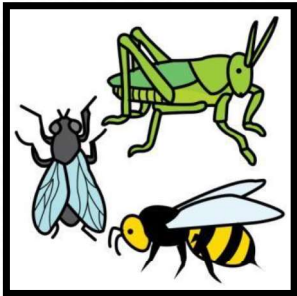
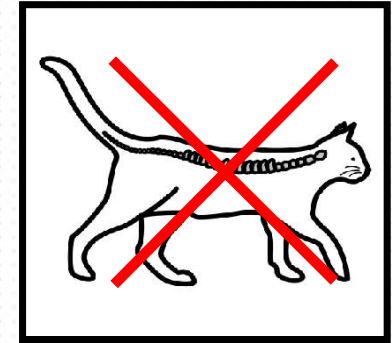
**MOLUSCOS; TEÑEN UN CORPO BLANDO E SEN PATAS, ARRÁSTRANSE CUN GRAN PÉ POLO CHAN. PODEN TER O CORPO PROTEXIDO POR UNHA CONCHA COMO EL CARACOL, OU NON TELO, COMO AS BABOSAS E POLBOS.**



Autor: Andrea Mendieta Araya

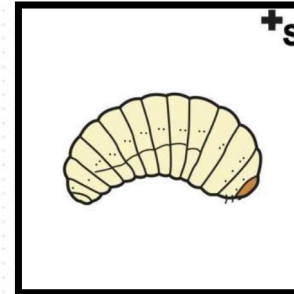
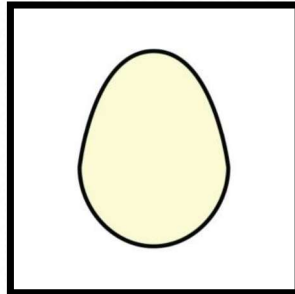
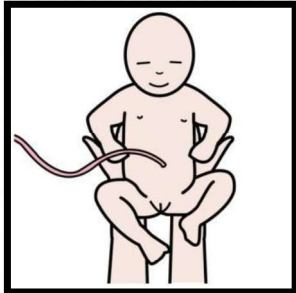
Autor pictogramas: Sergio Palao. Procedencia: ARASAAC (<http://arasaac.org>) Licencia: CC (BY-NC-SA)

# OS ANIMAIS INVERTEBRADOS



**INSECTOS SON OS MÁIS ABUNDANTES**

**SON OVÍPAROS (NACEN ÓVOS).**



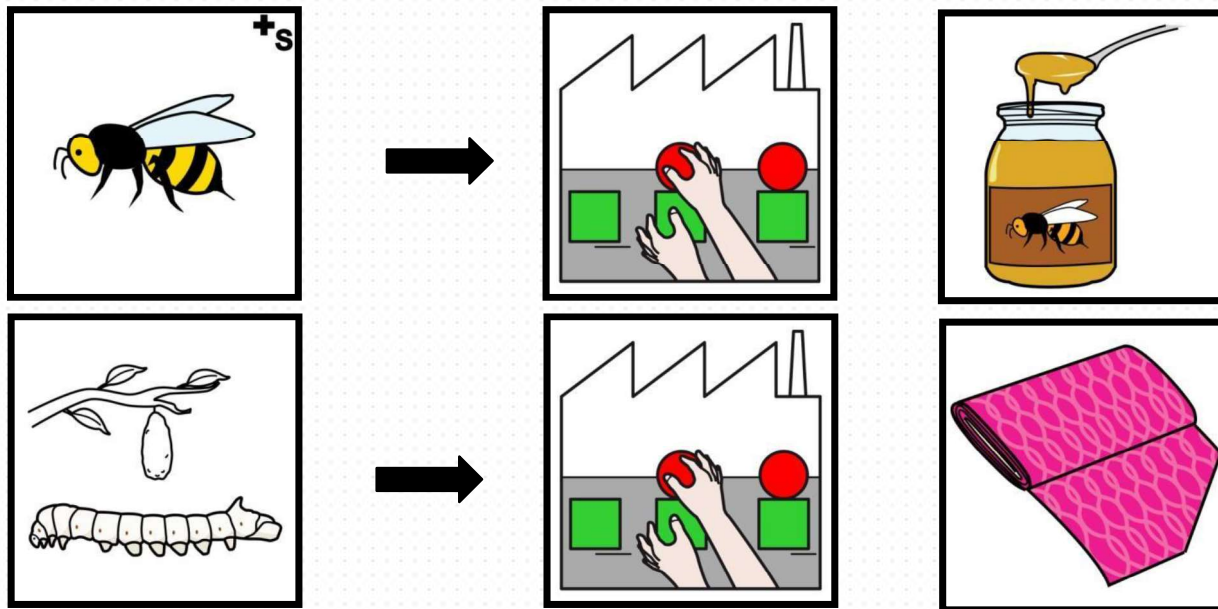
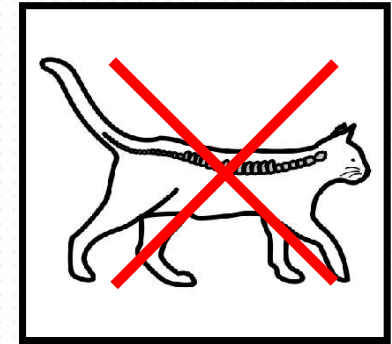
Autor: Andrea Mendieta Araya

Autor pictogramas: Sergio Palao. Procedencia: ARASAAC (<http://arasaac.org>) Licencia: CC (BY-NC-SA)



# OS ANIMAIS INVERTEBRADOS

**OS INSECTOS COMO AS ABELLAS PRODUCEN MEL E OS  
GUSANOS DE SEDA FABRICAN A SEDA**



Autor: Andrea Mendieta Araya

Autor pictogramas: Sergio Palao. Procedencia: ARASAAC (<http://arasaac.org>) Licencia: CC (BY-NC-SA)