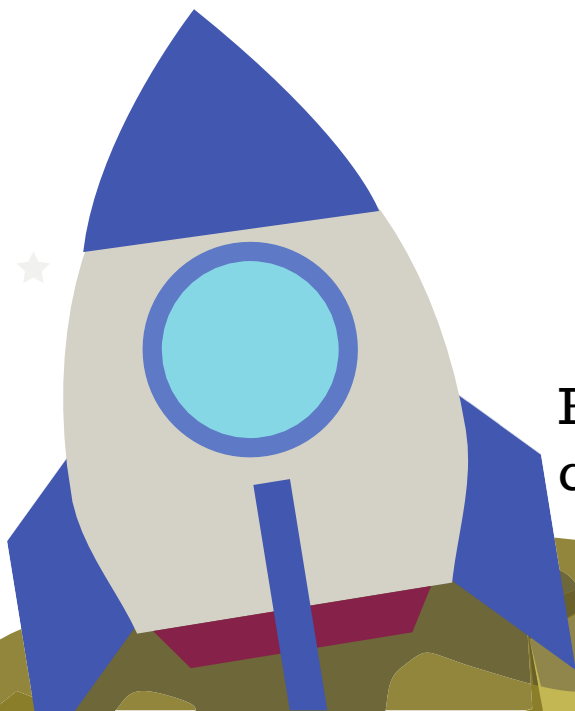
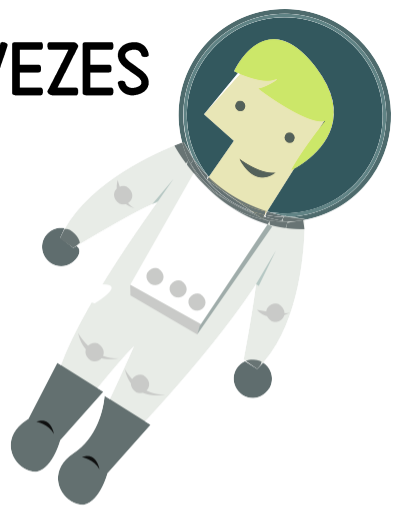


# O MEU CADERNO DE MATEMÁTICA



**Com modelos para**

**REUTILIZAR INFINITAS VEZES**



Por Diana Bericochea  
com pictogramas de ARASAAC

# **Apresentação**

Um livro para trabalhar as competências matemáticas de base, aumentando progressivamente a dificuldade sem necessidade de alterar o material.

Este é um livro reutilizável composto por diferentes modelos para contar, adicionar, subtrair, resolver problemas, fazer compras e muitas outras actividades matemáticas do dia a dia.

Permite combinar o estilo tradicional de uma ficha de trabalho que favorece o trabalho individual de mesa com o estilo teacch, incorporando materiais manipulativos na execução da tarefa. Podemos contar castanhas no outono, somar flores na primavera e realizar séries com pompons coloridos.

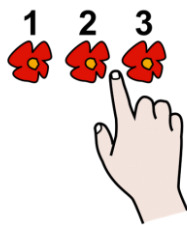
Apresenta frases simples em letras maiúsculas com o apoio visual de pictogramas para favorecer a compreensão autónoma das tarefas propostas.

Para preparar o material, este documento deve ser impresso, plastificado e, para escrever, deve usar-se um marcador especialmente concebido para quadros brancos.

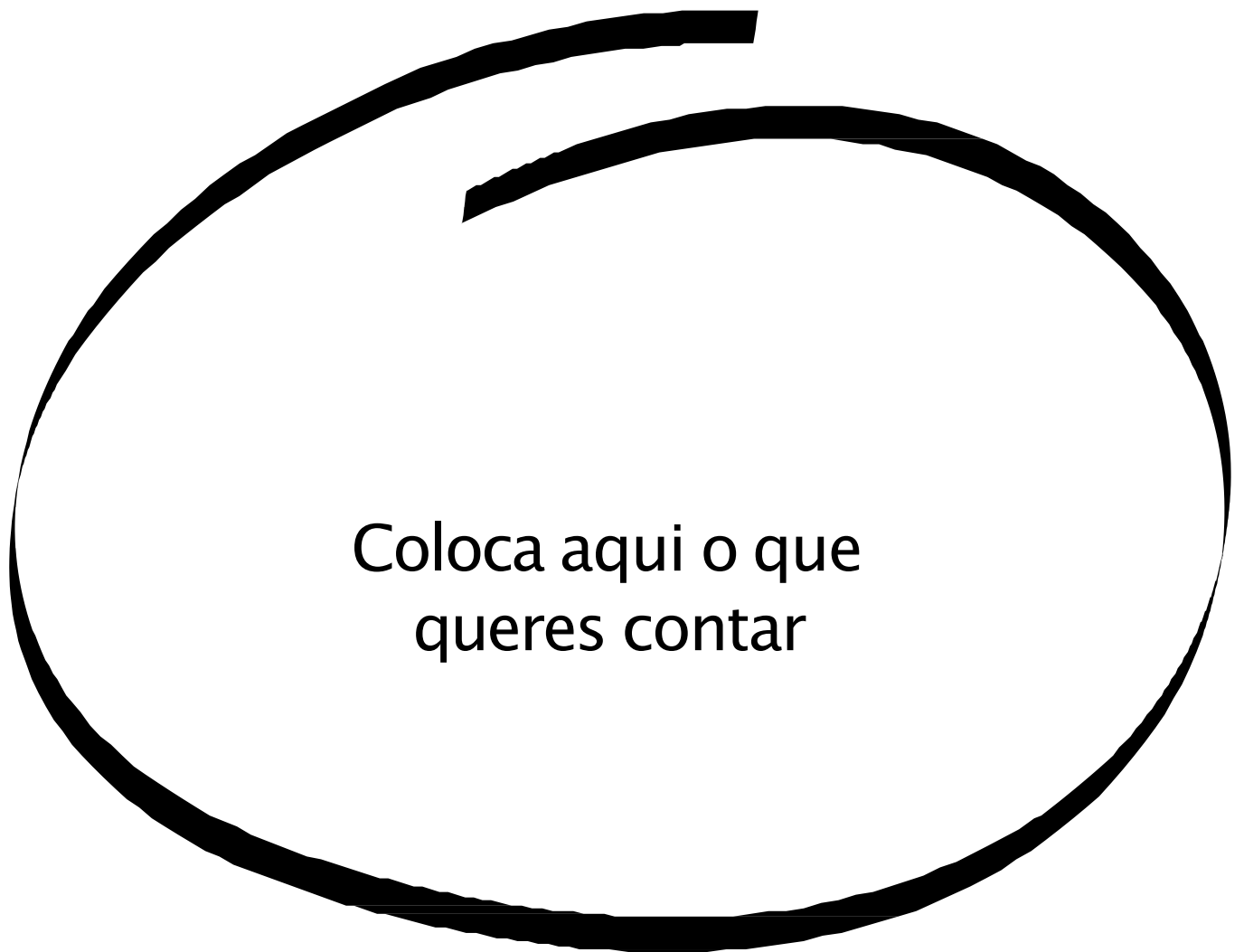




## COMPLETA

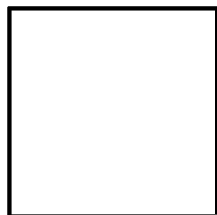



# CONTA



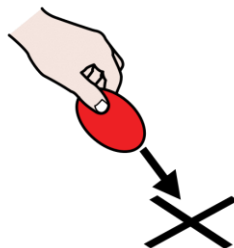
Coloca aqui o que  
queres contar

HÁ

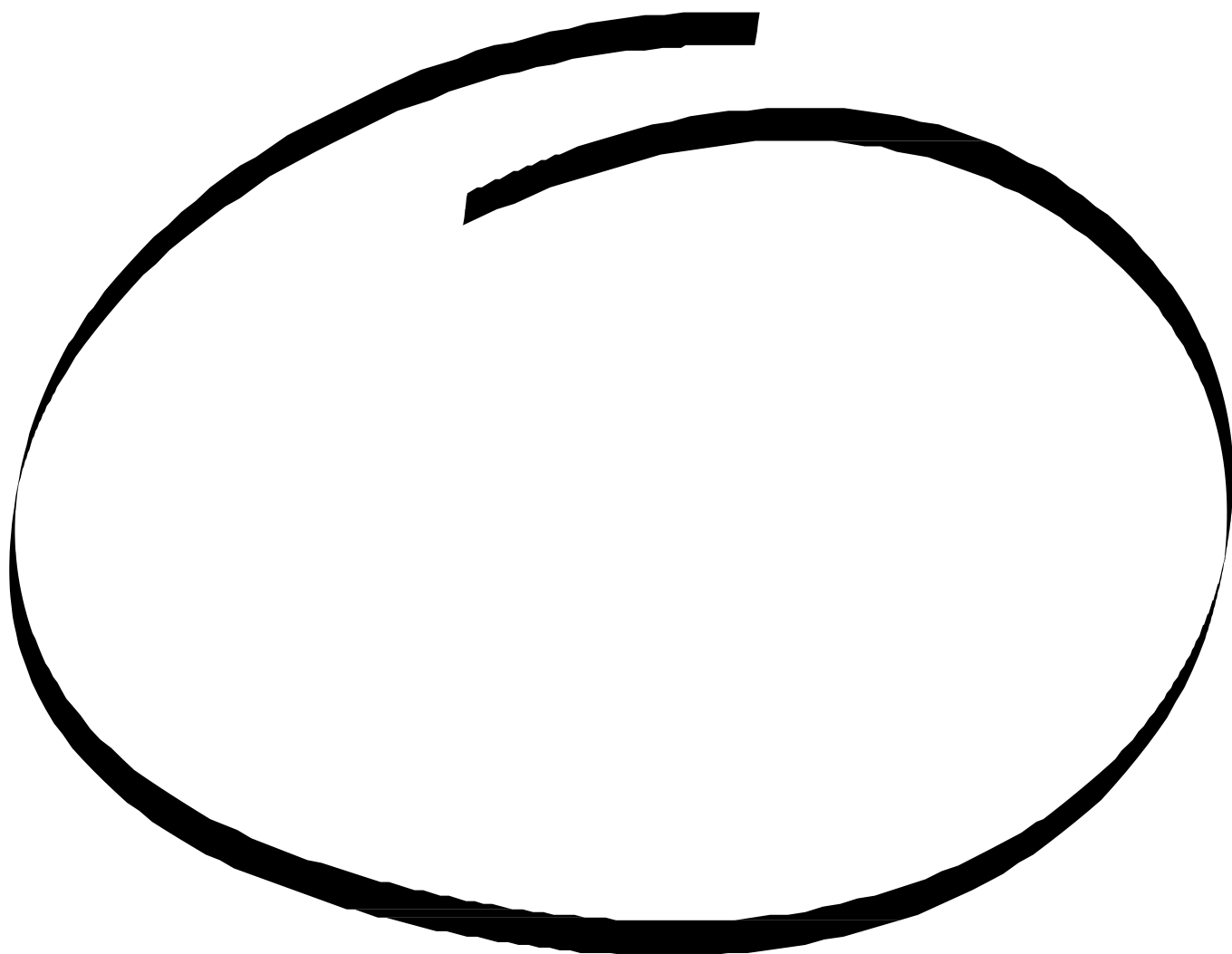


.....

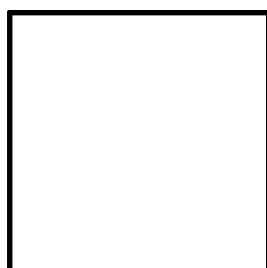
Contagem



**COLOCA**



**COLOCA**

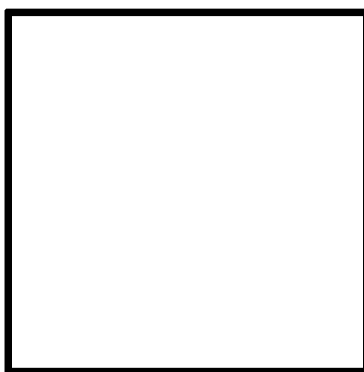
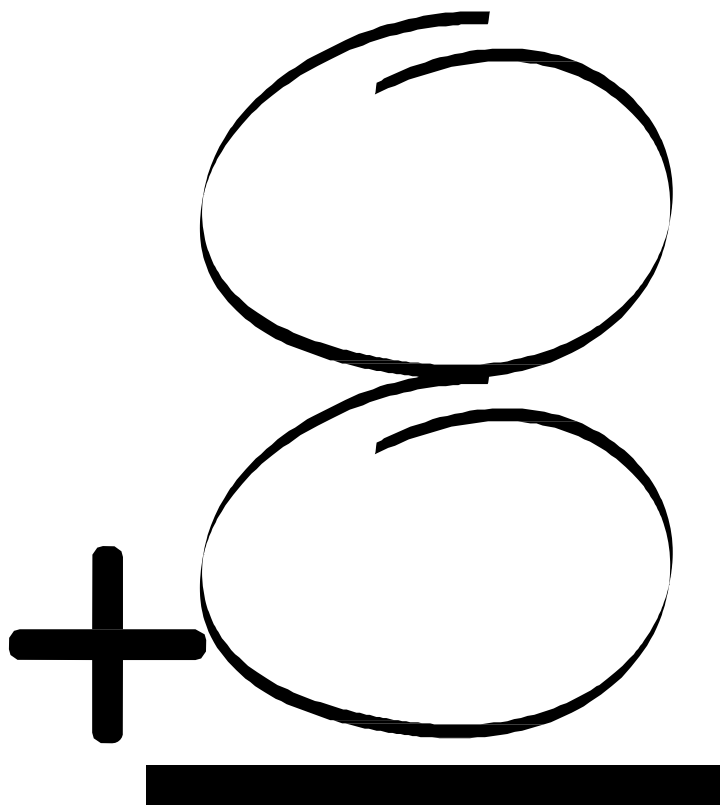


.....

Soma

$$\begin{array}{r} +8 \\ \underline{+2} \end{array}$$

**SOMA**

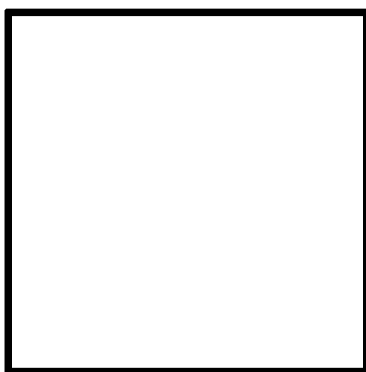
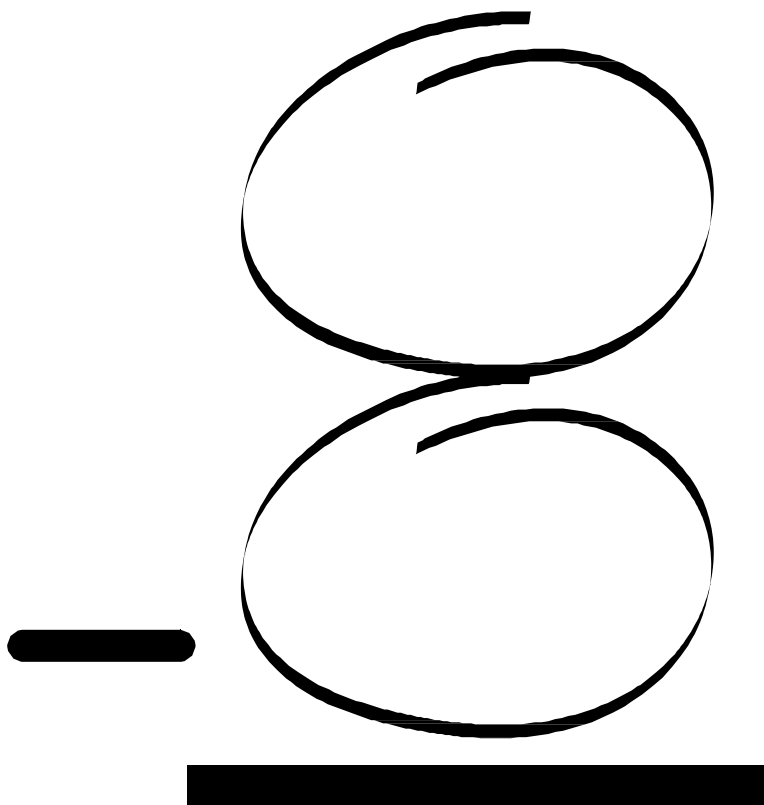


	+		=
--	---	--	---

Subtrai

$$\begin{array}{r} 8 \\ - 2 \\ \hline \end{array}$$

**SUBTRAI**



	-		=
--	---	--	---

Dinheiro



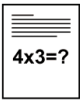
# COMPRAMOS

Coloca aqui os teus  
produtos

Calcula

Paga





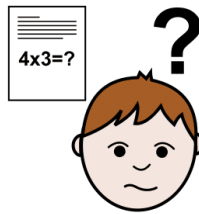
# RESOLVE

TINHA.....

OFERECERAM-ME.....

QUANTOS TENHO AGORA?

# Problema

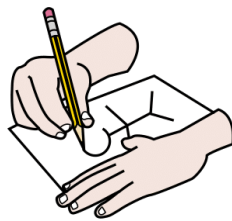


# RESOLVE

TINHA.....

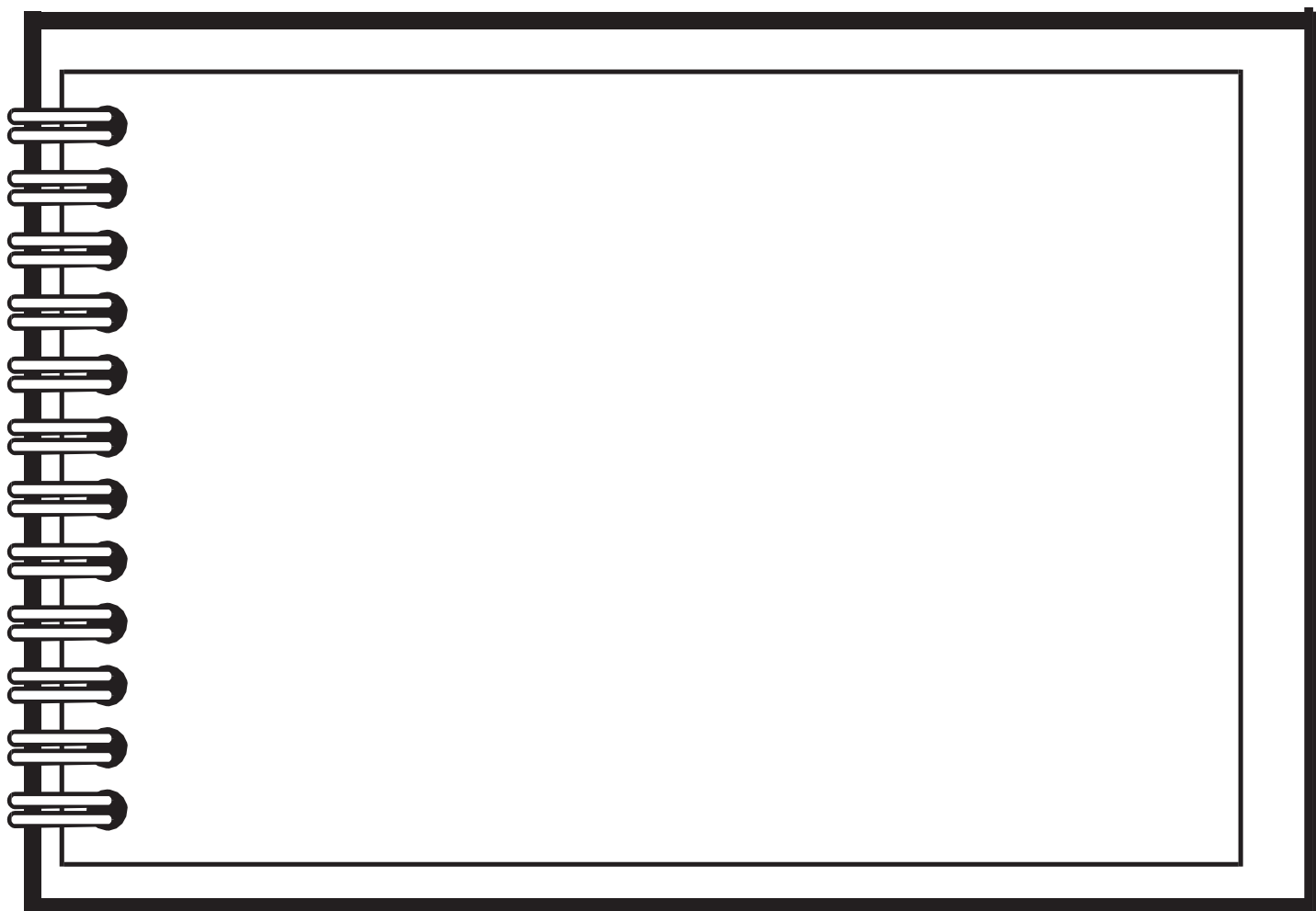
TIRARAM-ME.....

# QUANTOS TENHO AGORA?

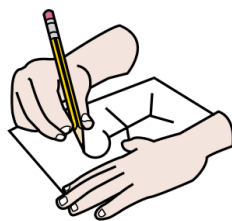


# DESENHA...

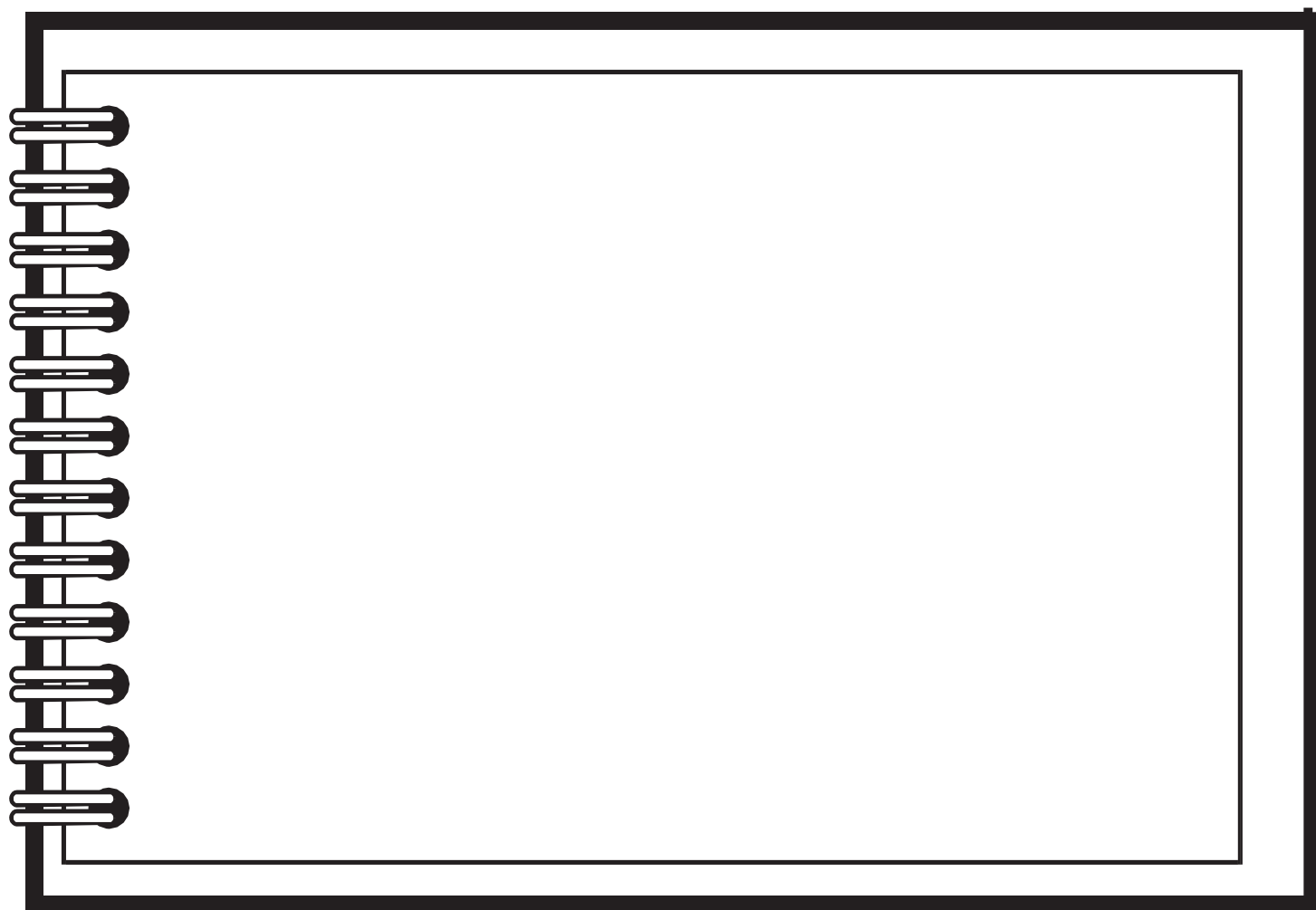
UMA COISA EM FORMA DE .....

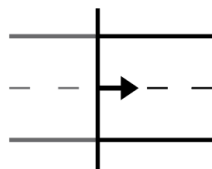


..... TEM FORMA DE .....

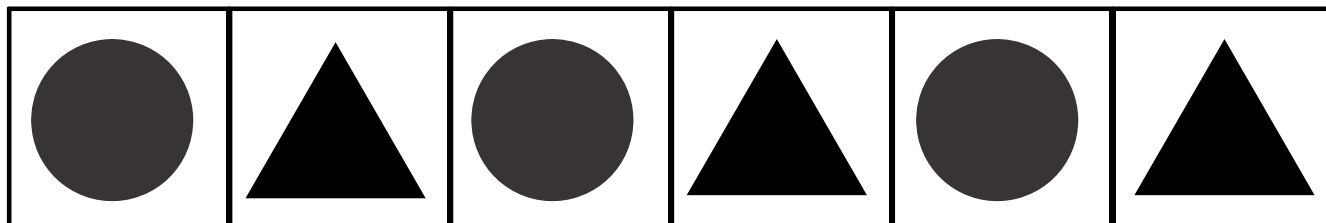


# DESENHA...





# CONTINUA A SÉRIE



--	--	--	--	--	--

--	--	--	--	--	--

--	--	--	--	--	--

--	--	--	--	--	--

--	--	--	--	--	--

# Classificação



# CLASSIFICA

A large, empty rectangular frame with a thick black border, tilted slightly to the right. The frame is composed of two concentric rectangles, creating a wide border. The interior is white.