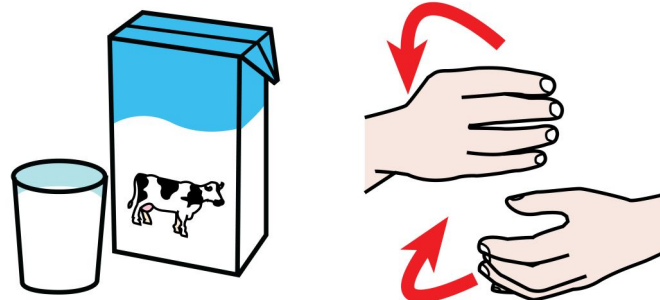


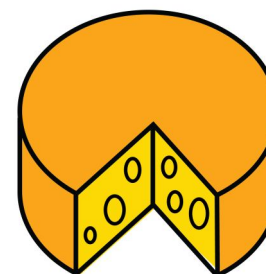
CON LA



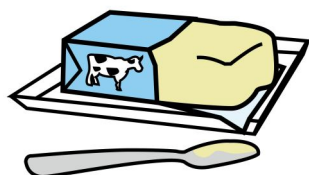
CON LA LECHE HACEMOS:



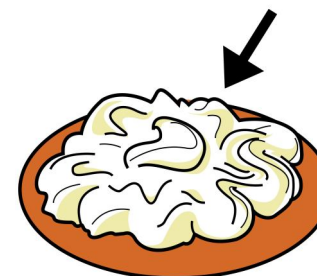
YOGUR



QUESO

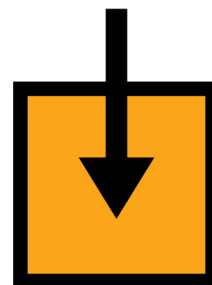
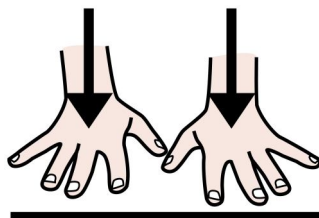


MANTEQUILLA



NATA

LA



LA



LA

LECHE

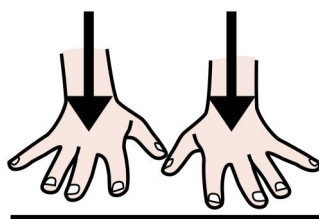
ESTÁ

EN

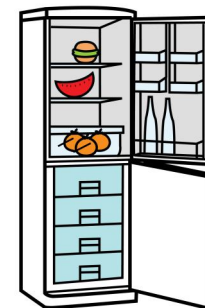
LA

BOTELLA

LA



LA



LA

LECHE

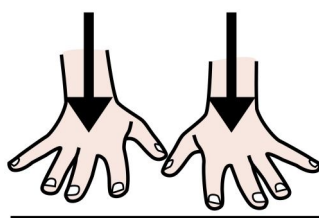
ESTÁ

EN

LA

NEVERA

LA



LA



LA

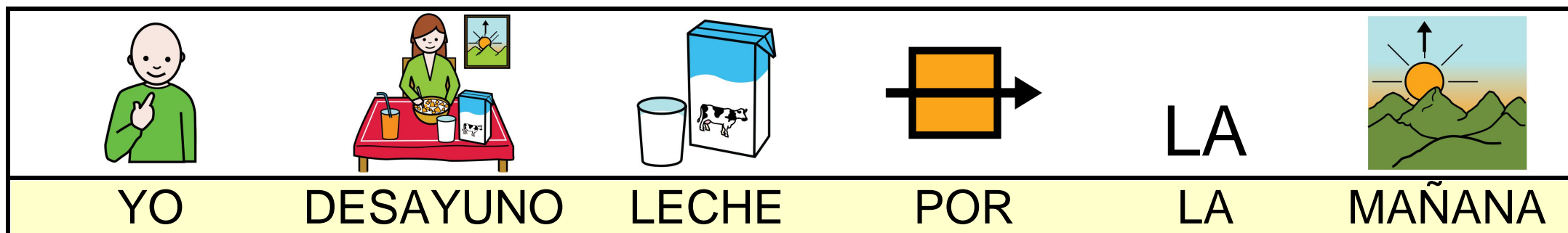
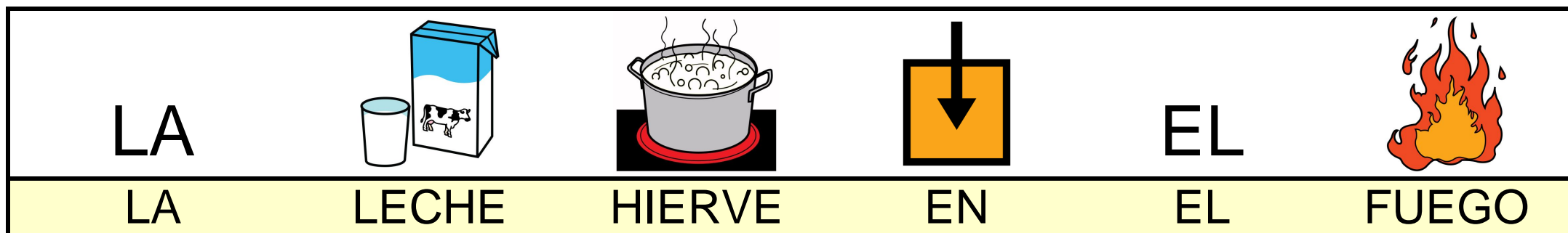
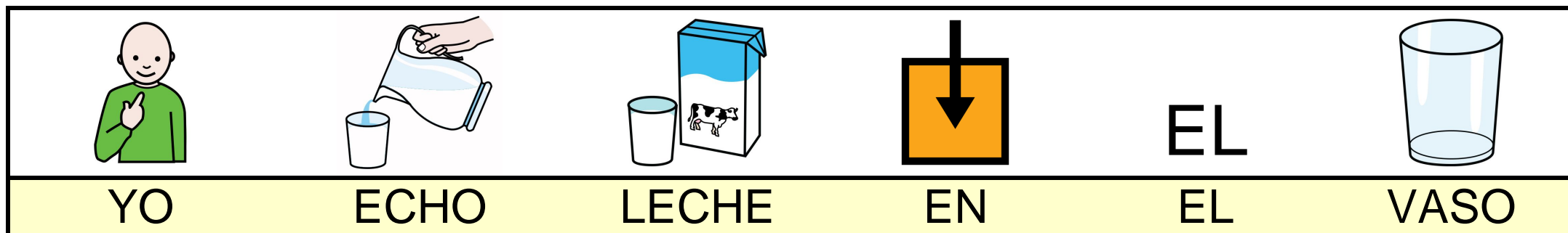
LECHE

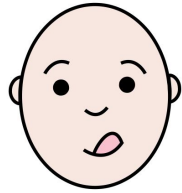
ESTÁ

EN

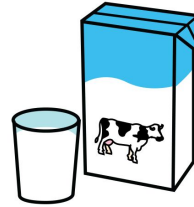
LA

TIENDA





LA



A MÍ

ME GUSTA

LA

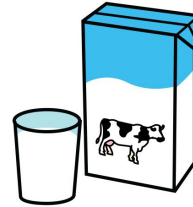
LECHE

CON

CACAO



LA



A MÍ

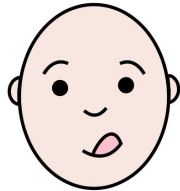
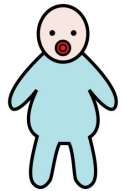
NO ME GUSTA

LA

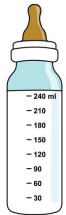
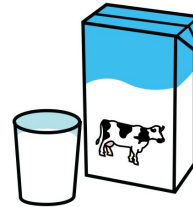
LECHE

CON

AZÚCAR



LA



AL BEBÉ

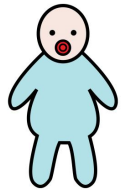
LE GUSTA

LA

LECHE

CON

BIBERÓN



EL



AL BEBÉ

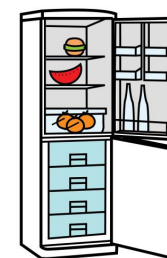
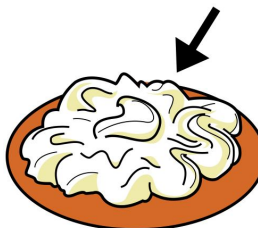
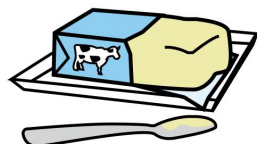
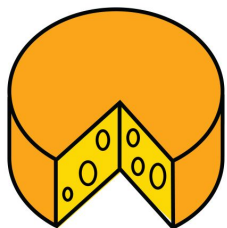
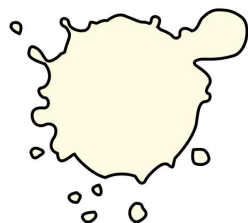
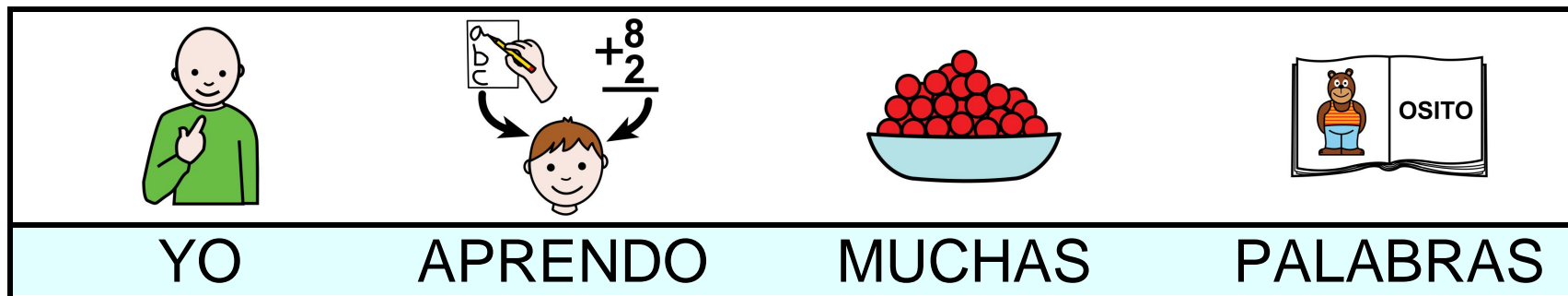
NO LE GUSTA


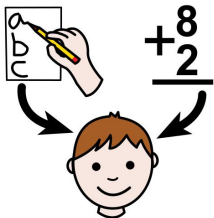
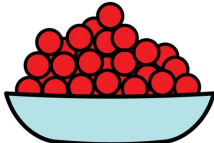

EL

CAFÉ

CON

LECHE



			
YO	APRENDO	MUCHAS	PALABRAS

