

CON QUALE CALZATURA?

FUNZIONI ESECUTIVE

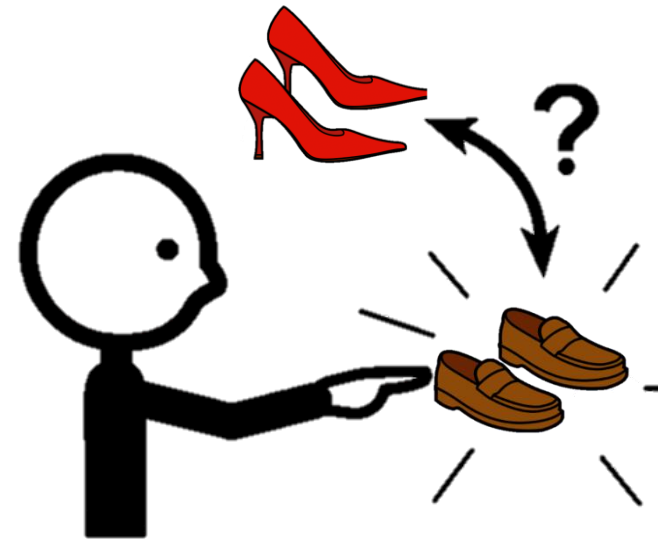


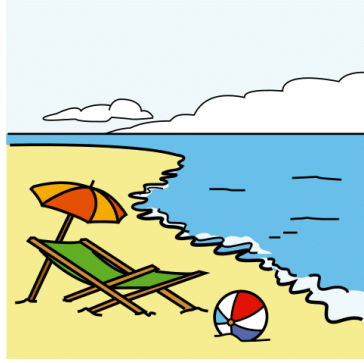
Autor pictogramas: Sergio Palao
Procedencia: ARASAAC (www.arasaac.org). Licencia: CC (BY-NC-SA)
Propiedad: Gobierno de Aragón
Autora: Psicóloga educativa Karen Marcela Herrera Changr
Traduzione: Siliotto Rosa



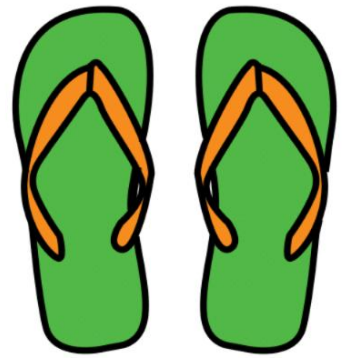
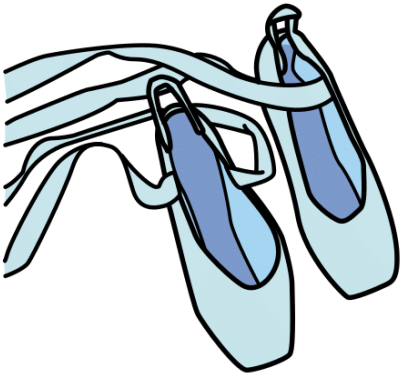
ISTRUZIONI

DEVI SCEGLIERE LA
CALZATURA ADEGUATA
PER OGNI SITUAZIONE E
INDICARLA





ANDARE ALLA SPIAGGIA





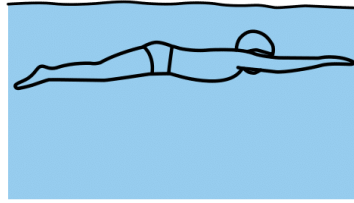
ANDARE A CORRERE



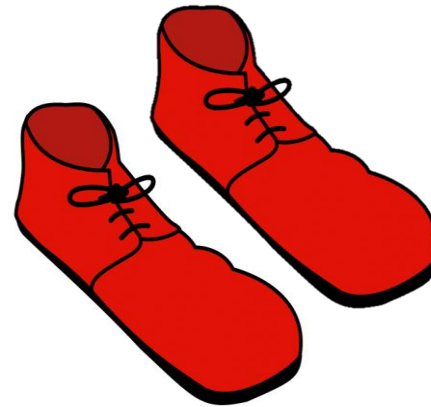
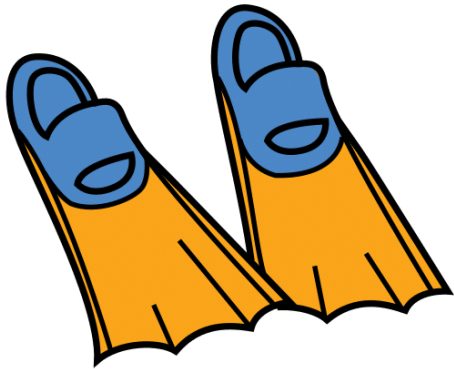


GIORNO DI PIOGGIA



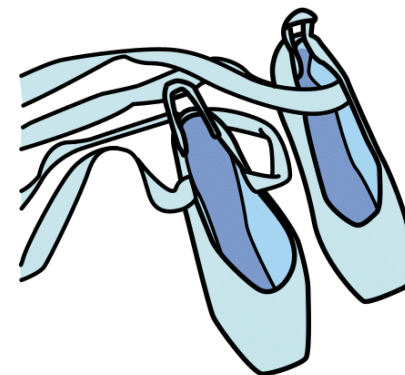


ANDARE A NUOTARE



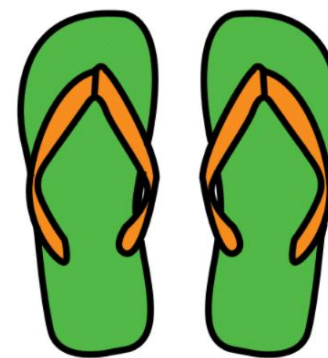
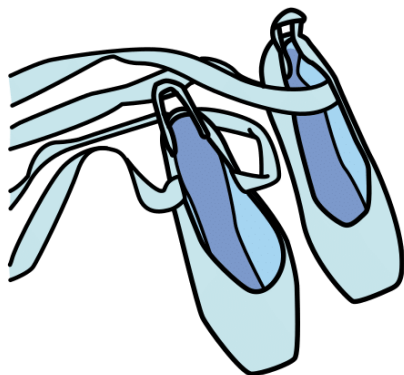


SCUOLA DI BALLO





ALZARSI DAL LETTO



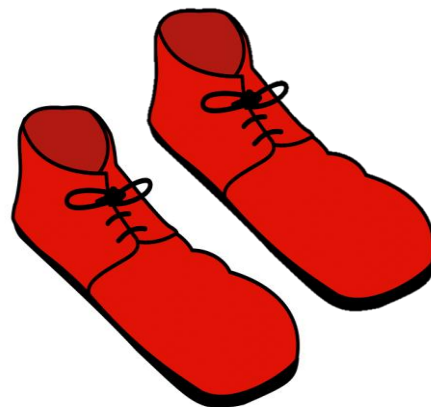
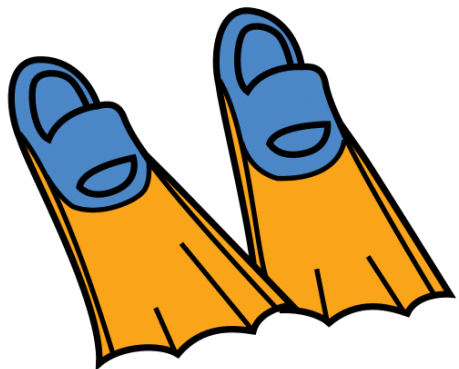


GIOCARRE A CALCIO





VESTIRSI DA PAGLIACCIO





SCALARE UNA MONTAGNA





ANDARE A LAVORARE



MOLTO BENE!



Autor pictogramas: Sergio Palao
Procedencia: ARASAAC (www.arasaac.org). Licencia: CC (BY-NC-SA)
Propiedad: Gobierno de Aragón
Autora: Psicóloga educativa Karen Marcela Herrera Chang
Traduzione: Siliotto Rosa