

# DOBBLE ROPA

## INVIERNO



**Autor pictogramas:** Sergio Palao **Procedencia:** ARASAAC  
(<http://arasaac.org>)

**Licencia:** CC (BY-NC-SA) **Propiedad:** Gobierno de Aragón.  
**Material elaborado por:** Laia López Agustín

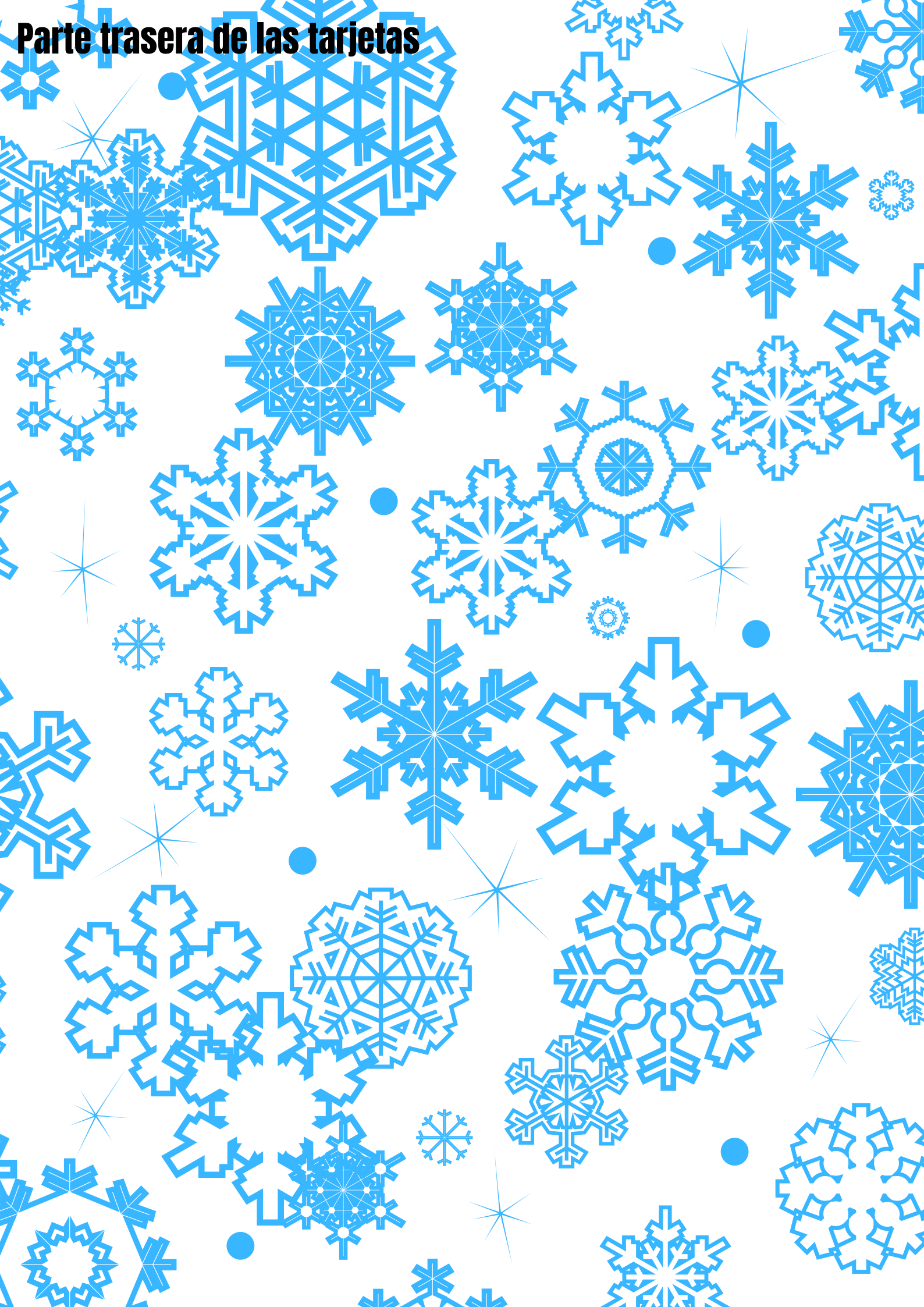


**ARASAAC**

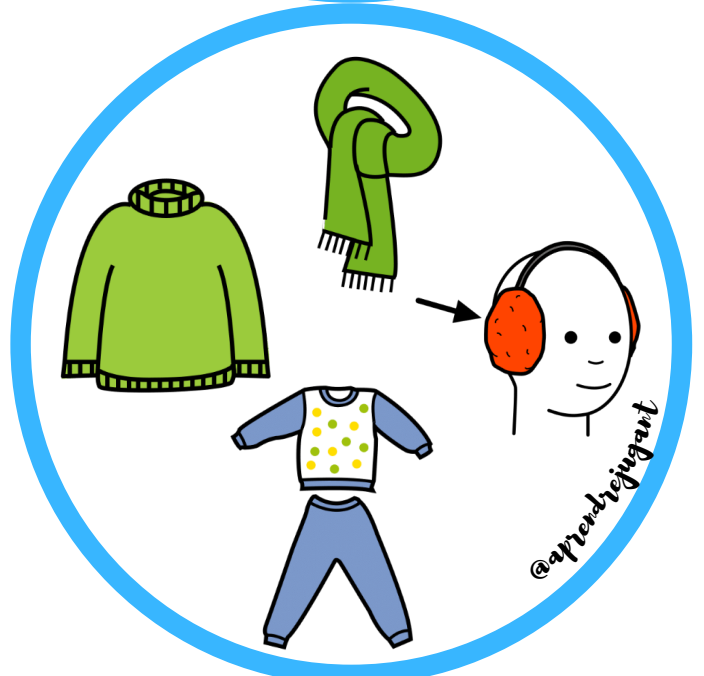


*@aprendrejugant*

# Parte trasera de las tarjetas













**PLUMAS**

**PLOMES**

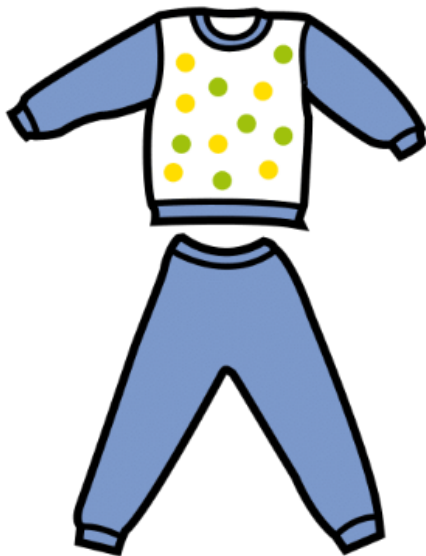
*@aprendrejugant*



**CAMISETA**

**SAMARRETA**

*@aprendrejugant*



**PIJAMA**

**PIIJAMA**

*@aprendrejugant*



**CHAQUETA**

**JAQUETA**

*@aprendrejugant*



**BATÍN**

BATÍ

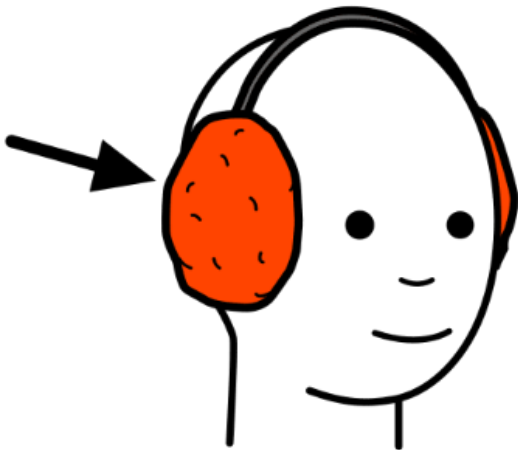
@aprendrejugant



**BOTAS**

BOTES

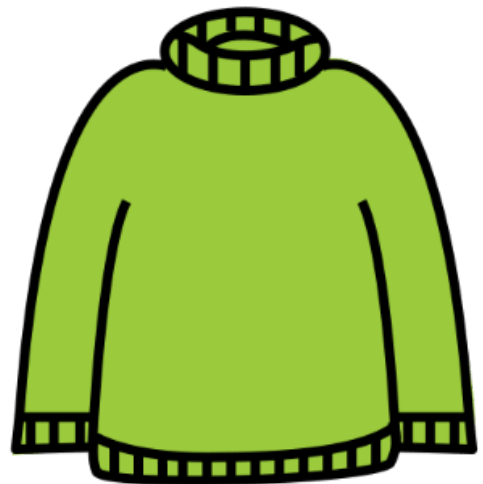
@aprendrejugant



**OREJERAS**

ORELLERES

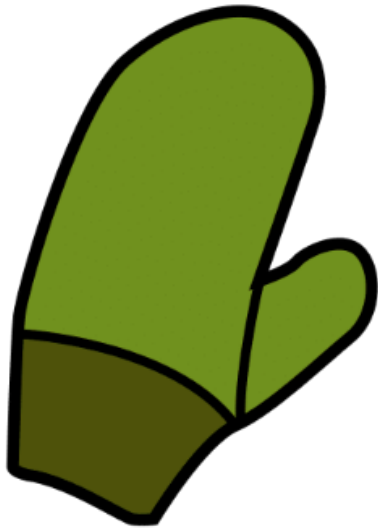
@aprendrejugant



**JERSEY**

JERSEY

@aprendrejugant



**MANOPLAS**

**MANYOPLES**

*@aprendrejugant*



**GUANTES**

**GUANTS**

*@aprendrejugant*



**GORRO**

**CAPELL**

*@aprendrejugant*



**BUFANDA**

**BUFANDA**

*@aprendrejugant*





**ABRIGO**

**ABRIC**

*@aprendrejugant*