

pastel ero



pescad ero



fruit ero



helad ero



zapat ero

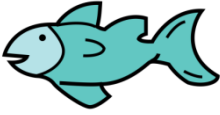


carn icero



pan adero





El sufixo

”-er”

pastel era



pescad era



frut era



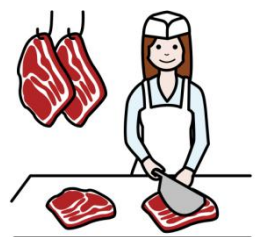
helad era



zapat era

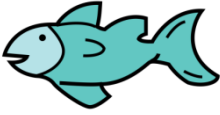


carn icera



pan adera

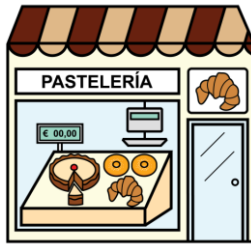




El sufixo

”-era”

pastel ería



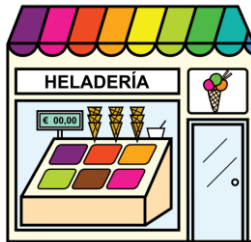
pescad ería



frut ería



helad ería



zapat ería

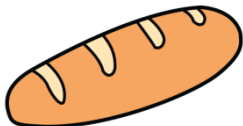
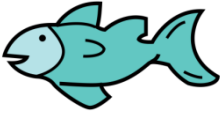


carn icería



pan adería





El sufixo

“-ería”

