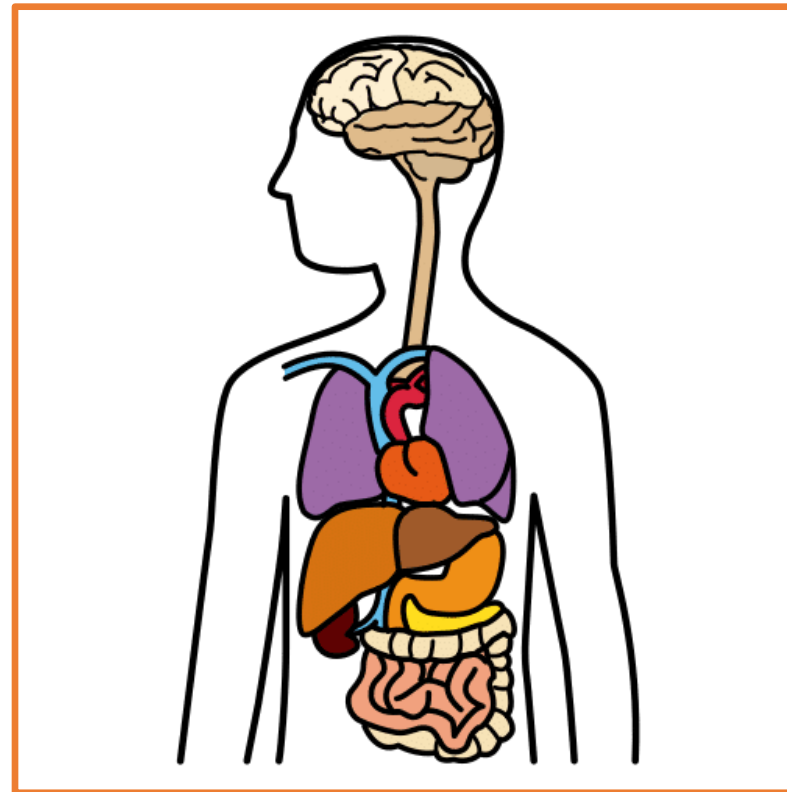
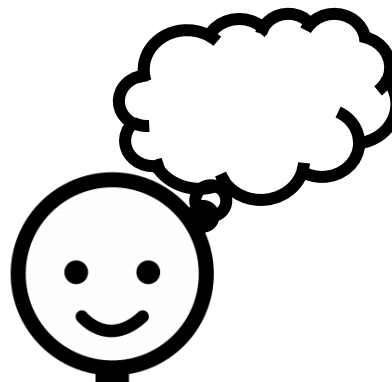
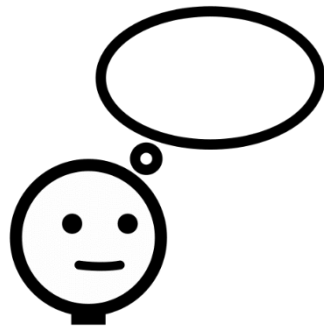
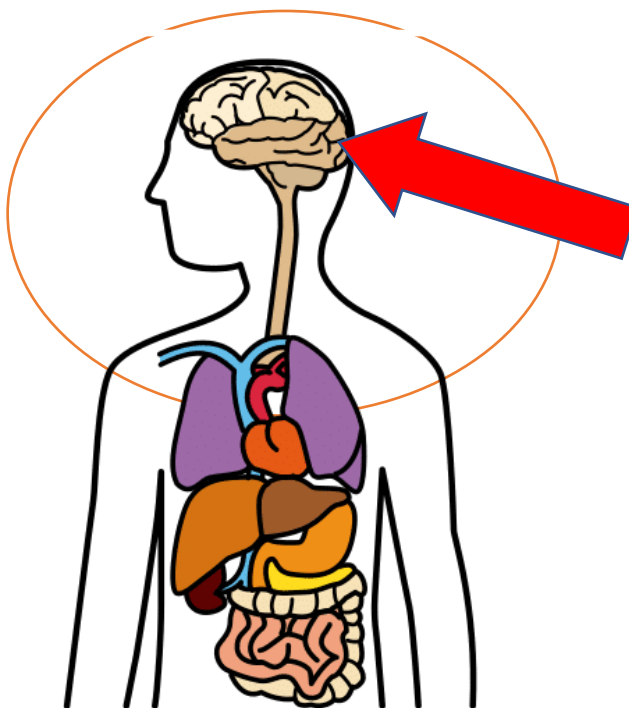


O corpo humano por dentro.

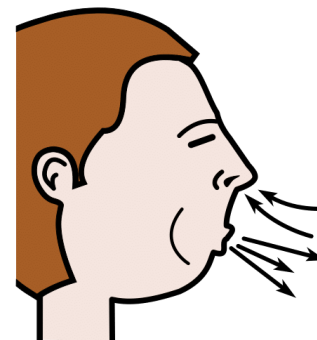
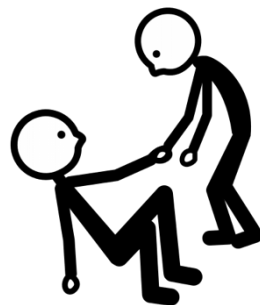
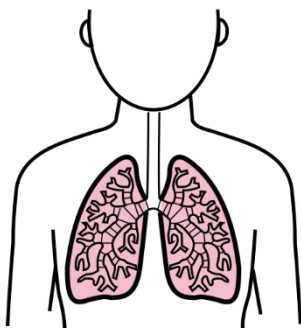




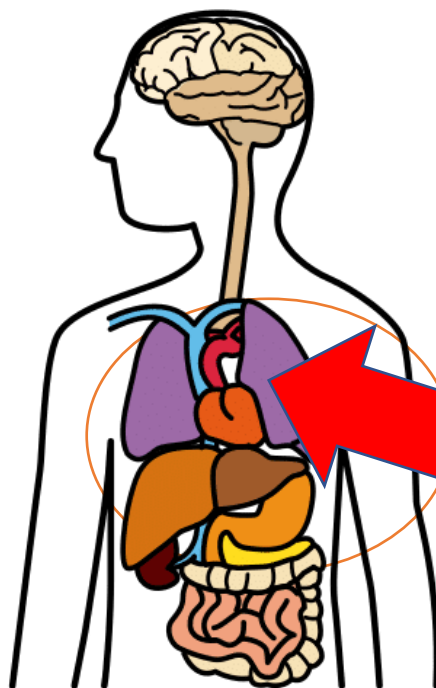
COM O **CÉREBRO** PENSAMOS, IMAGINAMOS, LEMBRAMO-NOS.



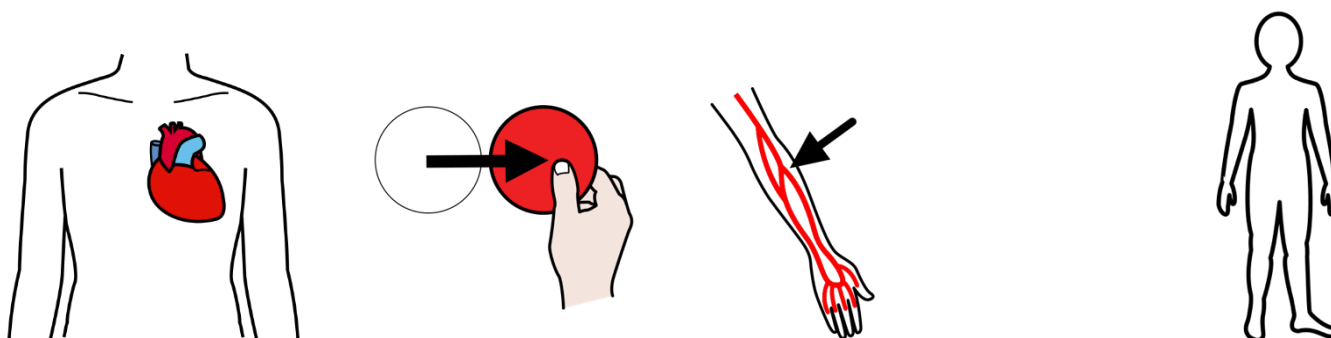
CÉREBRO



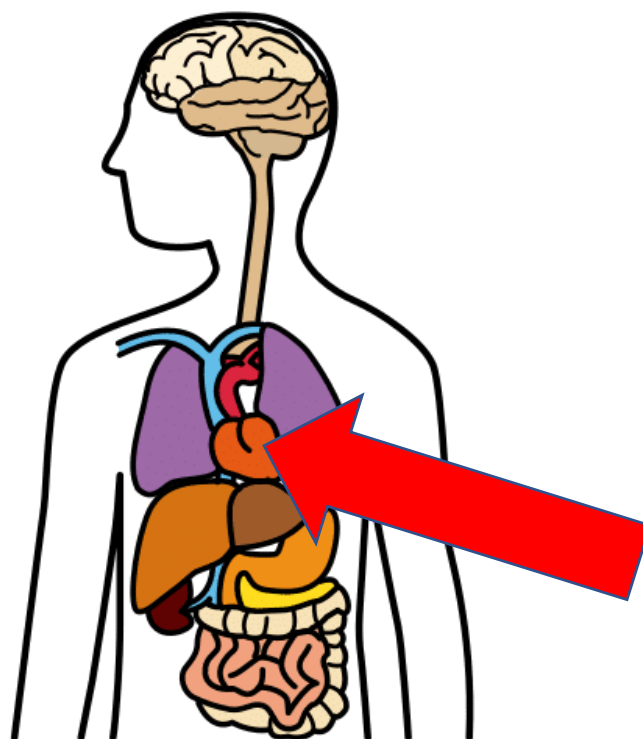
OS **PULMÕES** AJUDAM-NOS A RESPIRAR.



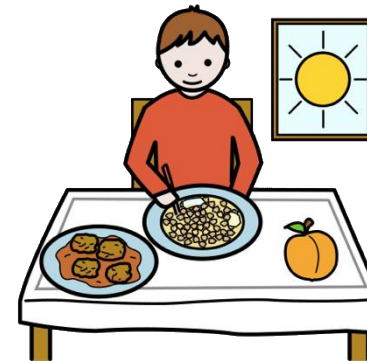
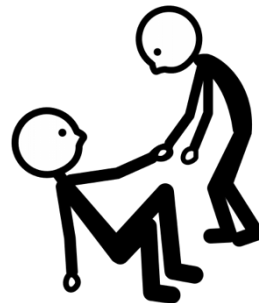
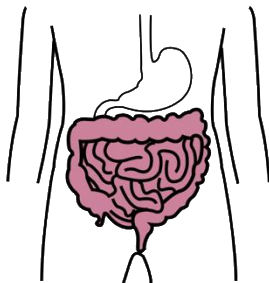
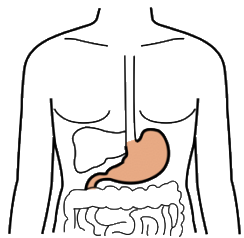
PULMÕES



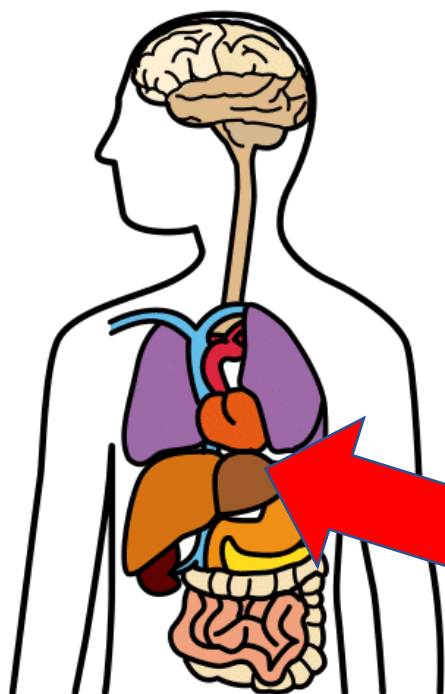
O **CORAÇÃO** ENVIA O SANGUE PARA O CORPO.



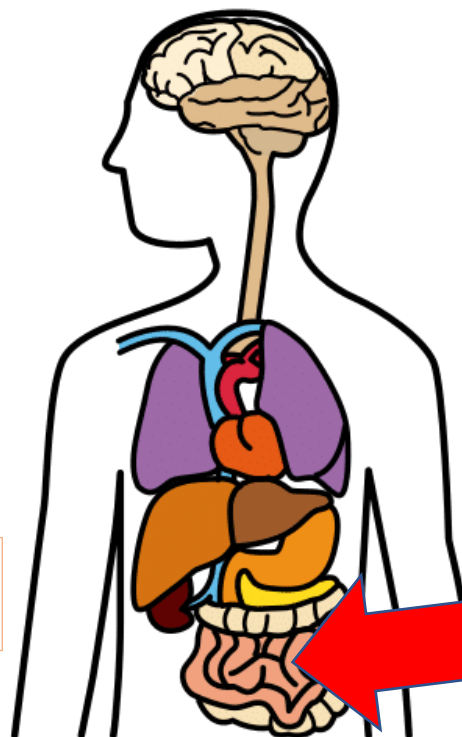
CORAÇÃO



O **ESTÔMAGO** E OS **INTESTINOS** AJUDAM NA ALIMENTAÇÃO.



ESTÔMAGO



INTESTINOS

Preenche com o nome dos diferentes órgãos:
coração, intestinos, estômago, pulmões e cérebro.

