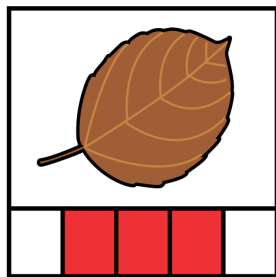


ARASAAC



AUTUNNO



OTTOBRE

31

TRENTUNO



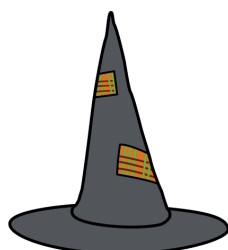
NOTTE



ZUCCA



STREGA



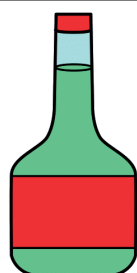
CAPPELLO
DA STREGA



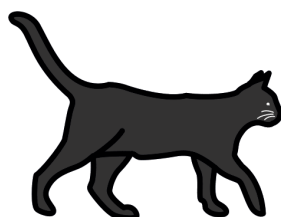
SCOPA



PENTOLONE



POZIONE MAGICA



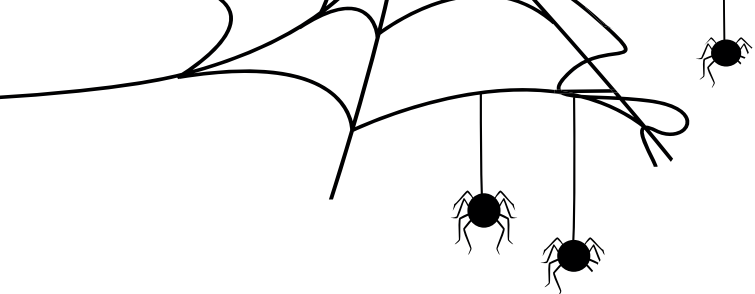
GATTO NERO



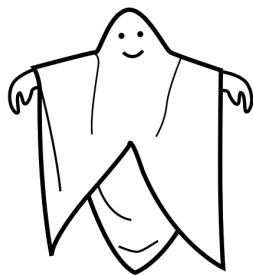
STREGONE

I simboli pittografici utilizzati sono di proprietà del governo di Aragona e sono stati creati da Sergio Palao per ARASAAC (<http://www.arasaac.org>), che li distribuisce sotto Licenza Creative Commons BY-NC-SA.

Materiale elaborato da Rosalba Riccobene.



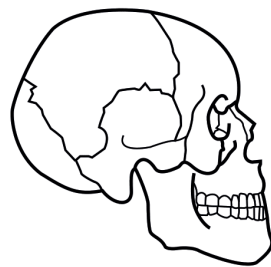
ARASAAC



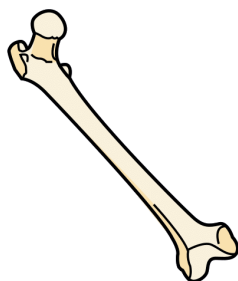
FANTASMA



SCHELETRO



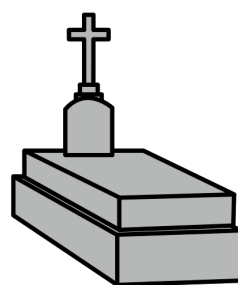
TESCHIO



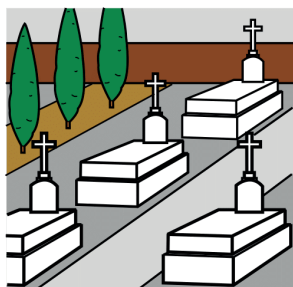
OSSO



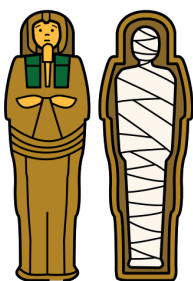
ZOMBIE



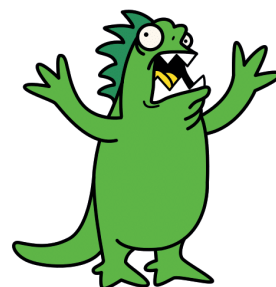
TOMBA



CIMITERO



MUMMIA



MOSTRO



FRANKENSTEIN



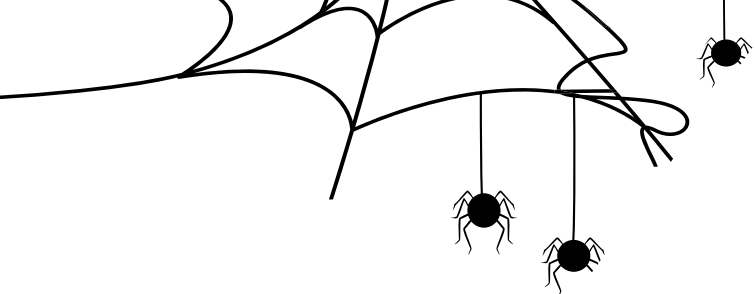
VAMPIRO



PIPISTRELLO

I simboli pittografici utilizzati sono di proprietà del governo di Aragona e sono stati creati da Sergio Palao per ARASAAC (<http://www.arasaac.org>), che li distribuisce sotto Licenza Creative Commons BY-NC-SA.

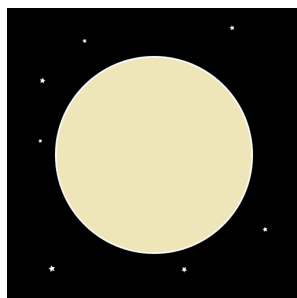
Materiale elaborato da Rosalba Riccobene.



ARASAAC



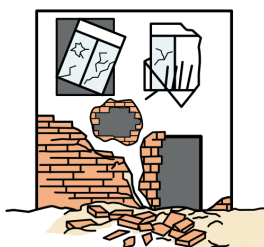
UOMO LUPO



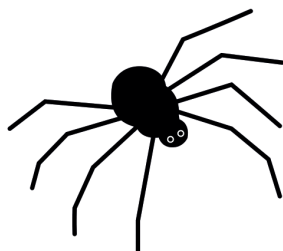
LUNA PIENA



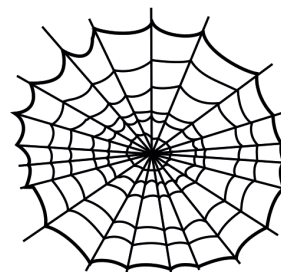
GUFO



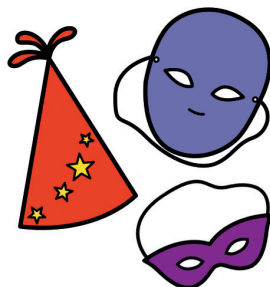
CASA
ABBANDONATA



RAGNO



RAGNATELA



MASCHERE



COSTUME
DA STREGA



COSTUME
DA SCHELETRO



COSTUME
DA DIAVOLETTA



PAURA



SPAVENTARE

I simboli pittografici utilizzati sono di proprietà del governo di Aragona e sono stati creati da Sergio Palao per ARASAAC (<http://www.arasaac.org>), che li distribuisce sotto Licenza Creative Commons BY-NC-SA.

Materiale elaborato da Rosalba Riccobene.



ARASAAC



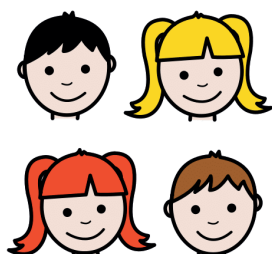
SPAVENTARE



PAUROSIO



PAUROSIA



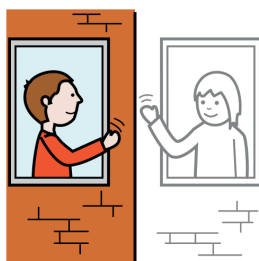
BAMBINI



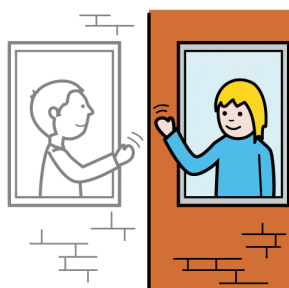
CESTA



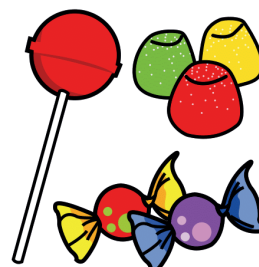
BUSSARE



VICINO DI CASA



VICINA DI CASA



DOLCETTI



LECCA LECCA



CIOCCOLATO



SCHERZETTO

I simboli pittografici utilizzati sono di proprietà del governo di Aragona e sono stati creati da Sergio Palao per ARASAAC (<http://www.arasaac.org>), che li distribuisce sotto Licenza Creative Commons BY-NC-SA.

Materiale elaborato da Rosalba Riccobene.