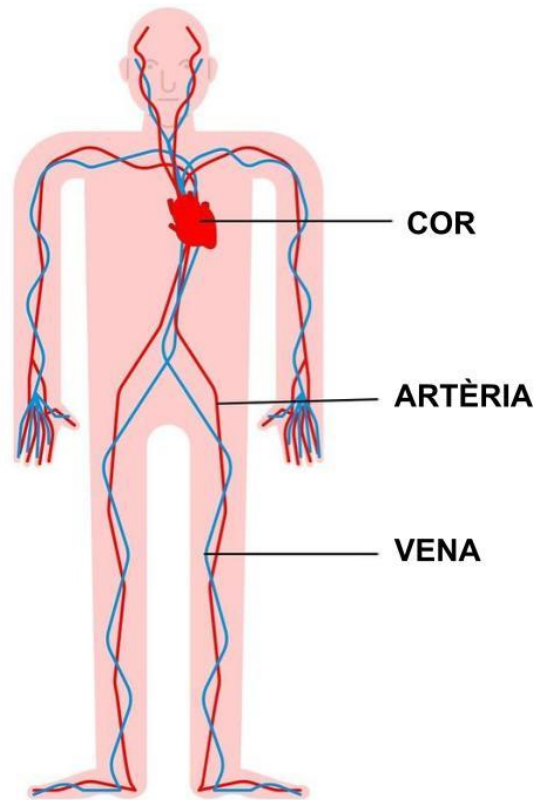
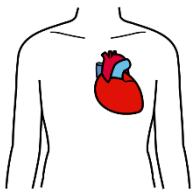


EL SISTEMA CIRCULATORI



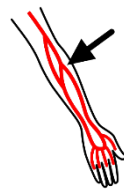
EL SISTEMA CIRCULATORI ESTÀ FORMAT PER:



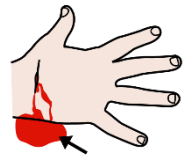
COR



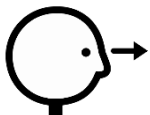
VENA



ARTÈRIA



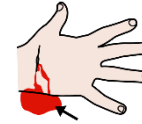
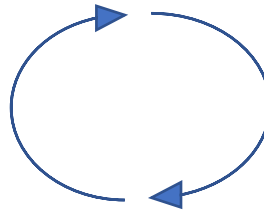
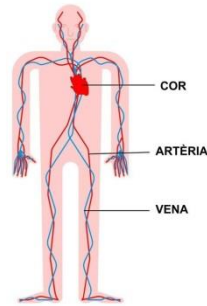
SANG



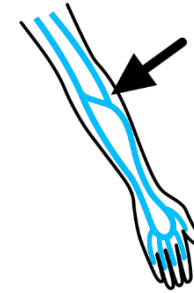
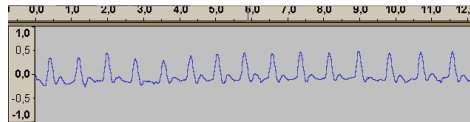
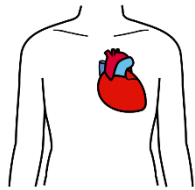
MIRA EL SEGÜENT VÍDEO ESCANEJANT EL CODI QR O CLICANT L'ENLLAÇ:

[L'Aparell Circulatori](#)

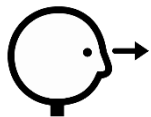




EL SISTEMA CIRCULATORI REPARTEIX LA SANG PER TOT EL COS.

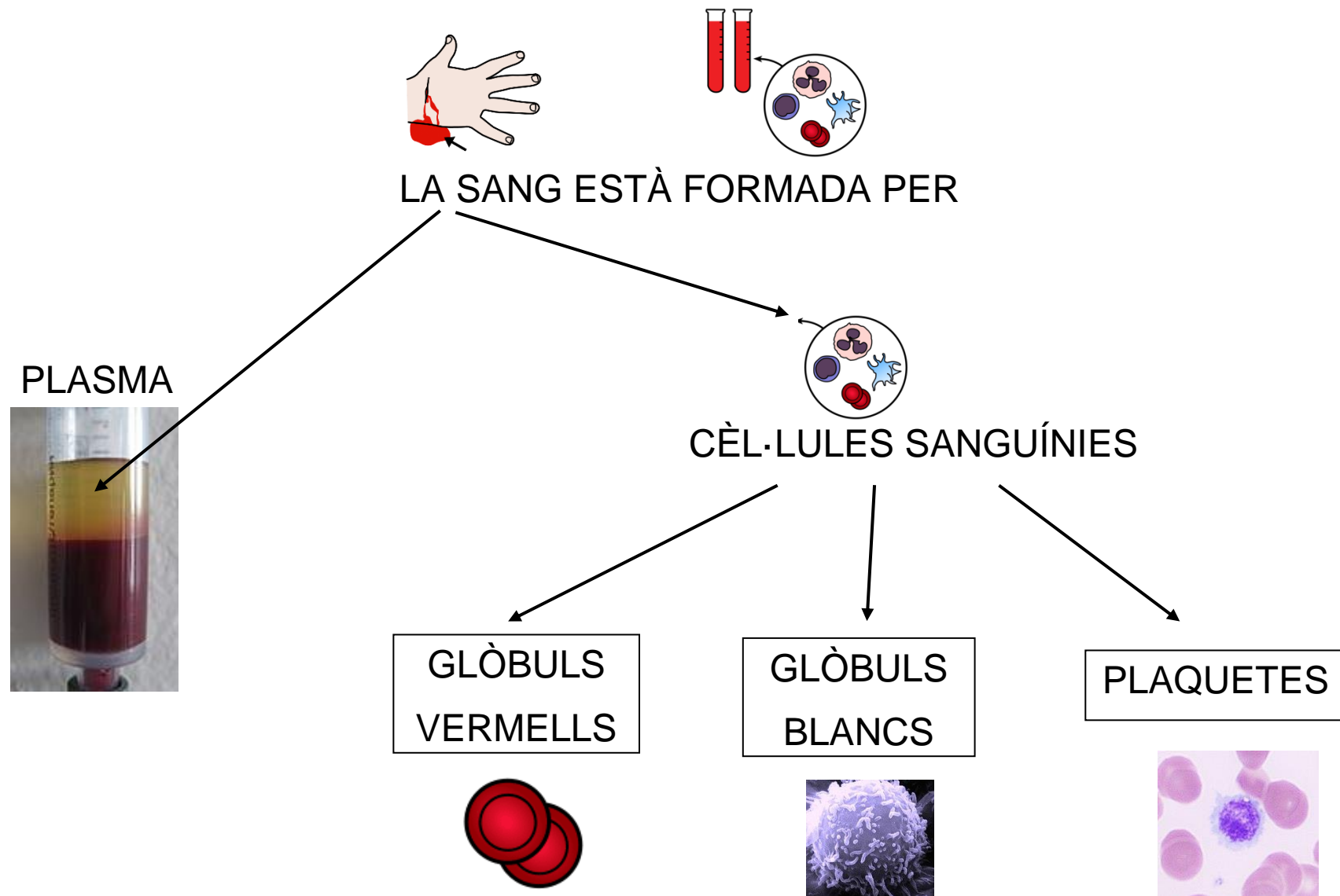


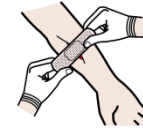
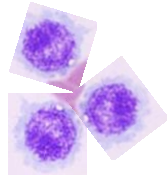
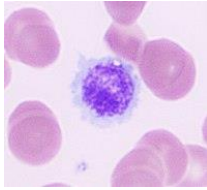
EL COR BATEGA I BOMBEJA LA SANG PER LES ARTÈRIES I LES VENES.



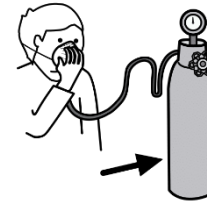
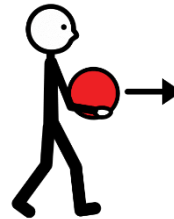
MIRA EL SEGÜENT VÍDEO ESCANEJANT EL CODI O CLICANT L'ENLLAÇ: [Gràfic 3D i Funcionament del cor](#)



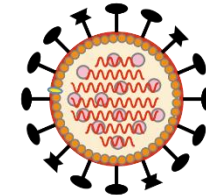
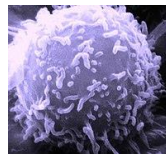




LES PLAQUETES S'UNEIXEN I TAPEN LES FERIDES, COM UNA TIRETA.



ELS GLÒBULS VERMELLS TRANSPORTEN L'OXIGEN AL NOSTRE COS.



ELS GLÒBULS BLANCS DEFENSEN EL COS QUAN HI HA UNA INFECCIÓ.