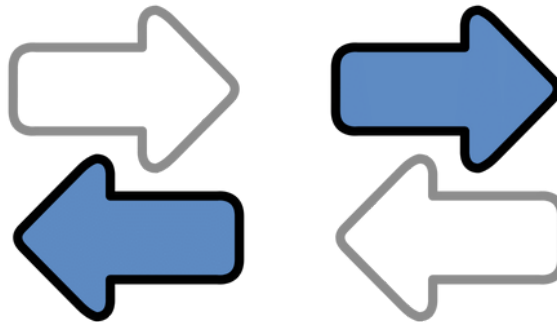
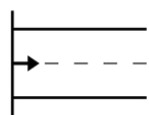


¡Gira i Explora! Aprendrem Orientació Espacial Dreta i Esquerra

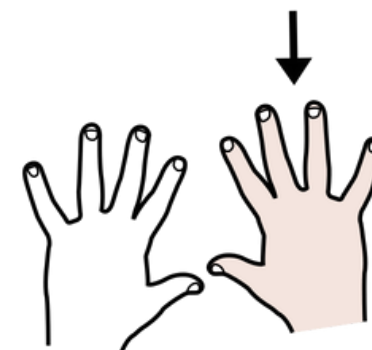
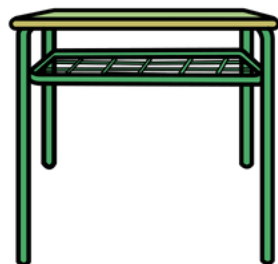
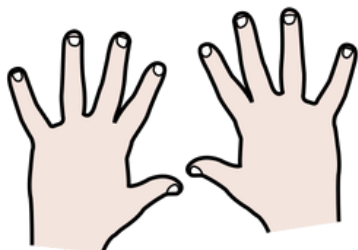


ARASAAC

Concepte: DRETA

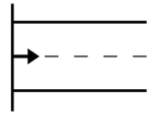


Iniciem amb un joc amb les mans

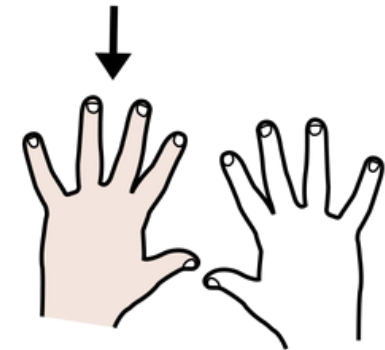
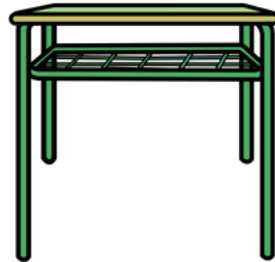
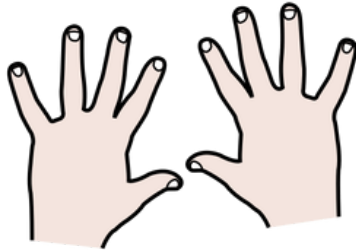


Posem les mans damunt de la taula i aixequem la mà DRETA

Concepte: ESQUERRA



Comencem amb un joc de mans



Posem les mans damunt de la taula i aixequem la mà ESQUERRA

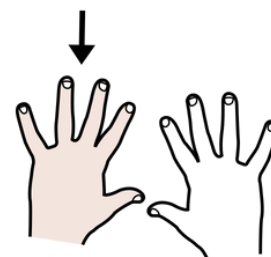
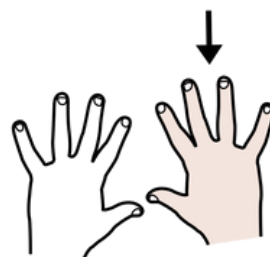
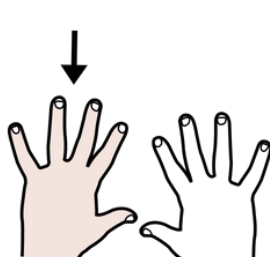
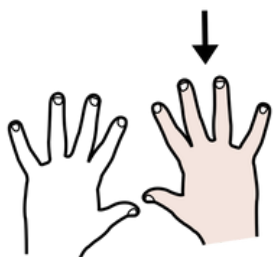
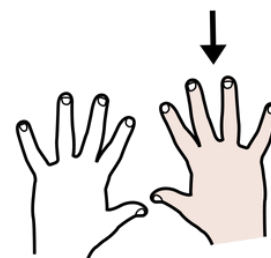
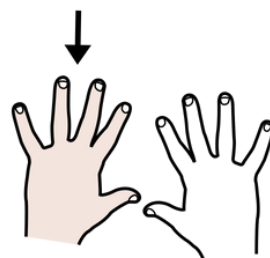
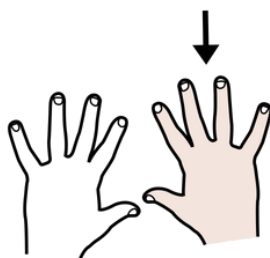
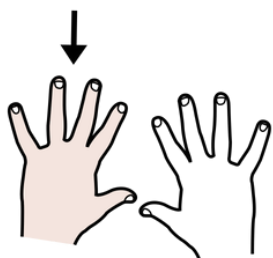
Juguem amb les mans



Aixequem la



que indica la



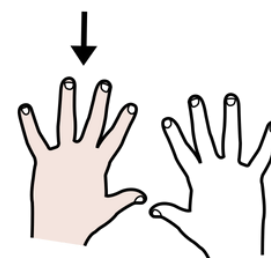
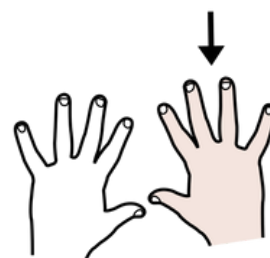
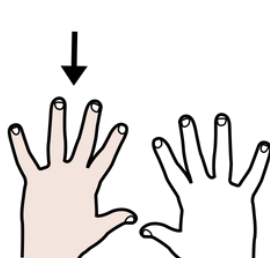
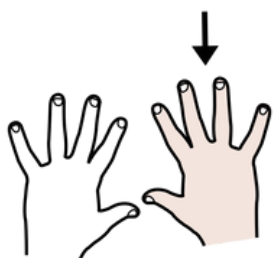
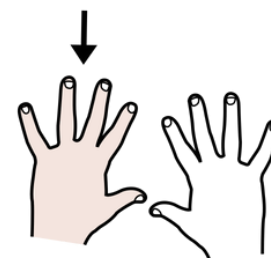
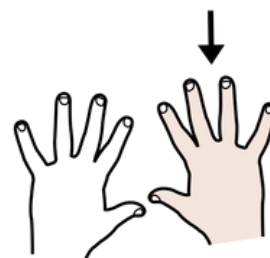
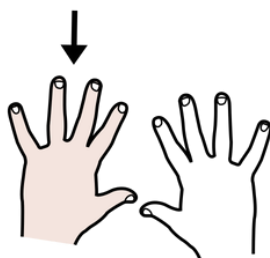
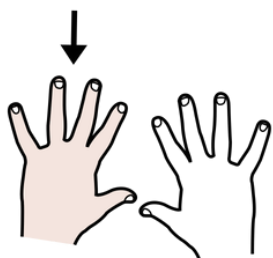
Juguem amb les mans



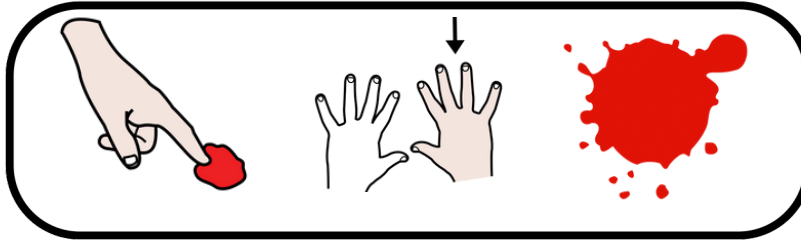
Aixequem la



que indica la



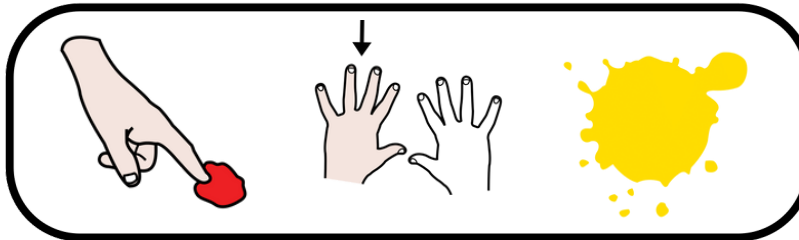
Juguem amb les mans



Toquem amb la mà DRETA el color roig



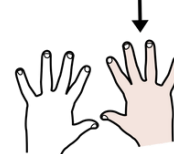
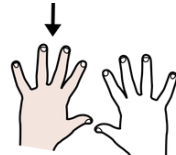
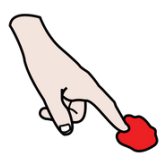
Juguem amb les mans



Toquem amb la mà ESQUERRA el color groc



Juguem amb les mans

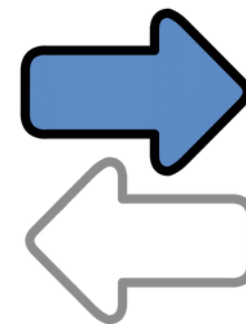
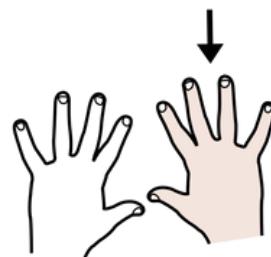


Toquem amb la mà
ESQUERRA el color blau i
amb la mà DRETA el color
rosa

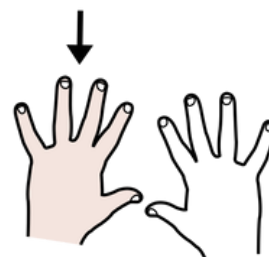


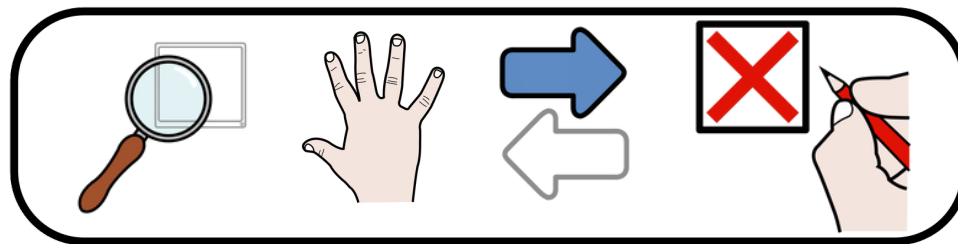


DRETA

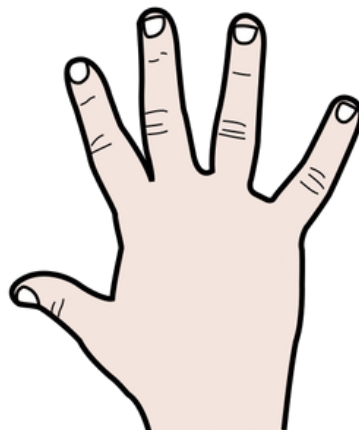
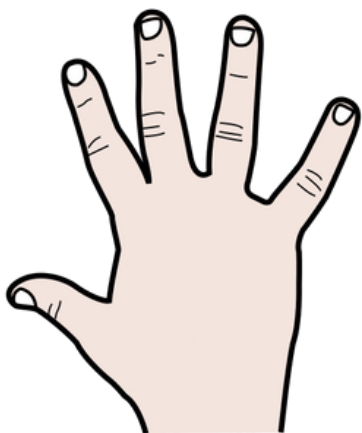


ESQUERRA



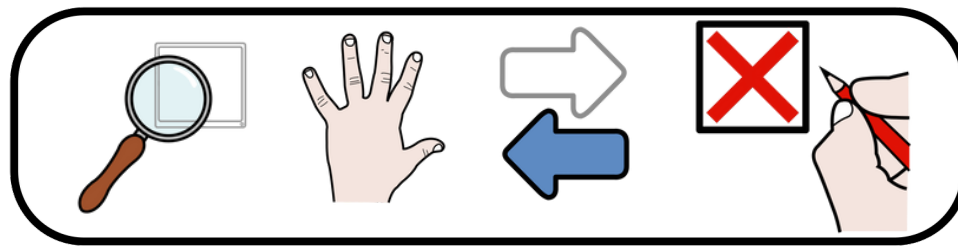


Busca la mà DRETA
i fes una creu.

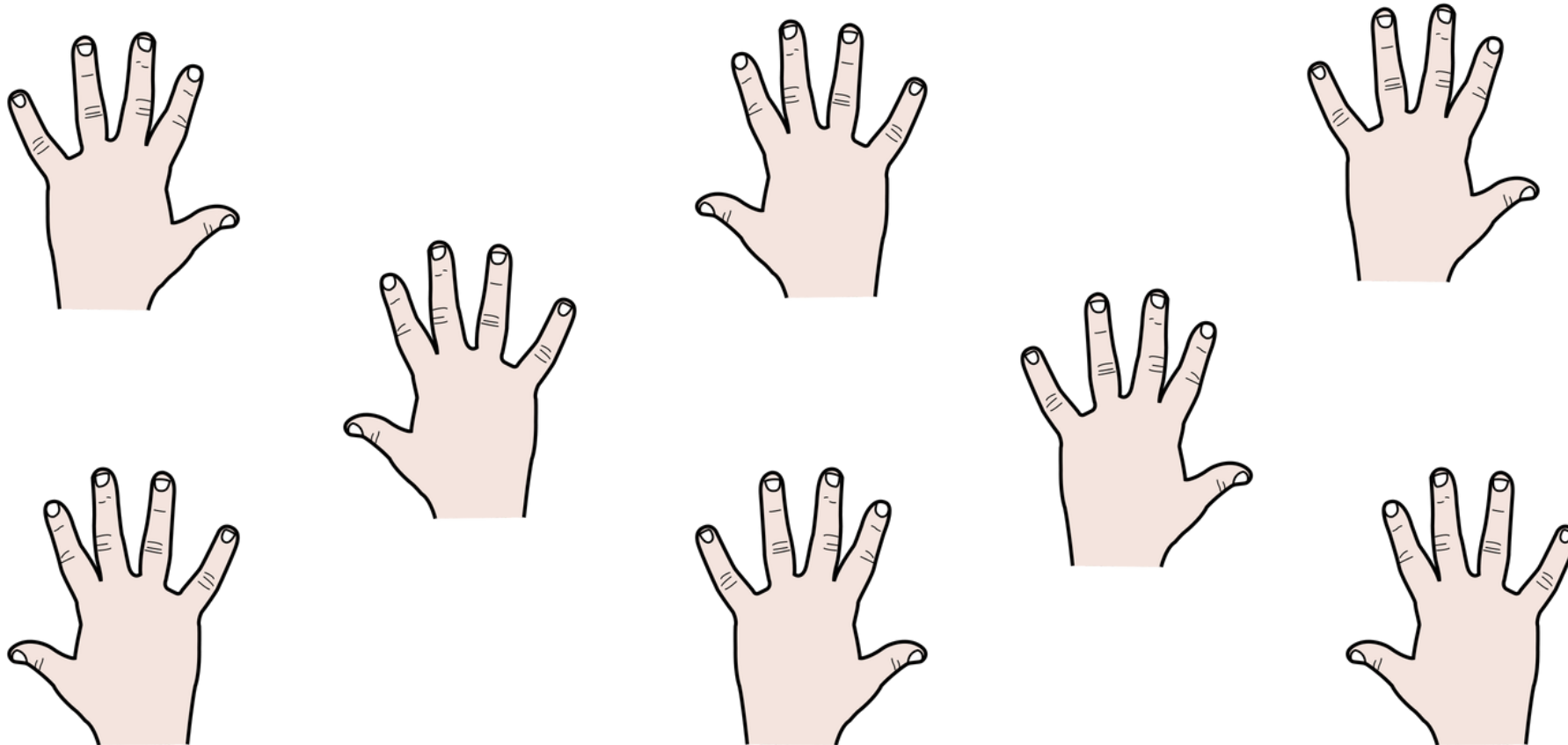


Autor pictogrames: Sergio Palao **Procedencia:** ARASAAC (<http://arasaac.org>) **Licencia:** CC (BY-NC-SA)

Autora: María Sarely Mateos Díaz www.educandocorazones.com

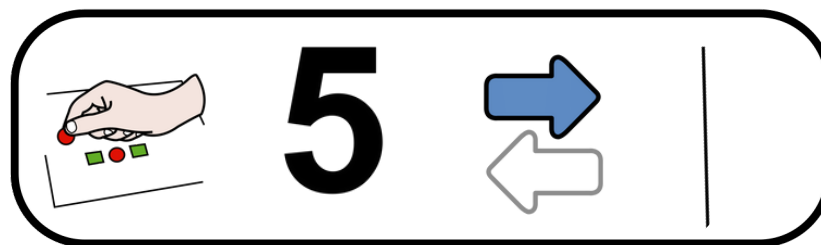


Busca la mà
ESQUERRA i fes
una creu.



Autor pictogrames: Sergio Palao **Procedencia:** ARASAAC (<http://arasaac.org>) **Licencia:** CC (BY-NC-SA)

Autora: María Sarely Mateos Díaz www.educandocorazones.com

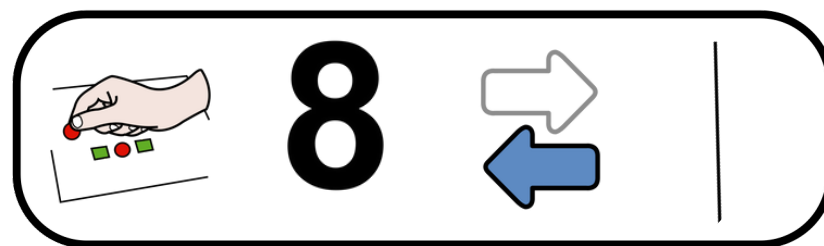


Posa 5 gomets a la
DRETA de la línia.



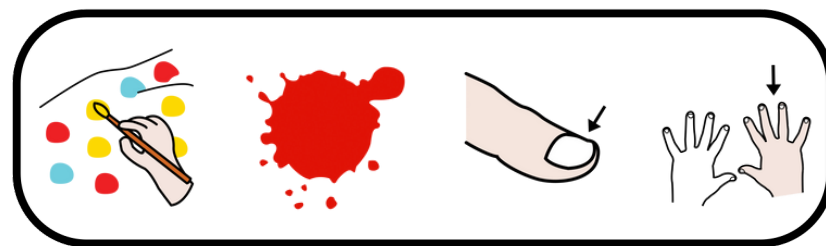
Autor pictogramas: Sergio Palao **Procedencia:** ARASAAC (<http://arasaac.org>) **Licencia:** CC (BY-NC-SA)

Autora: María Sarely Mateos Díaz www.educandocorazones.com

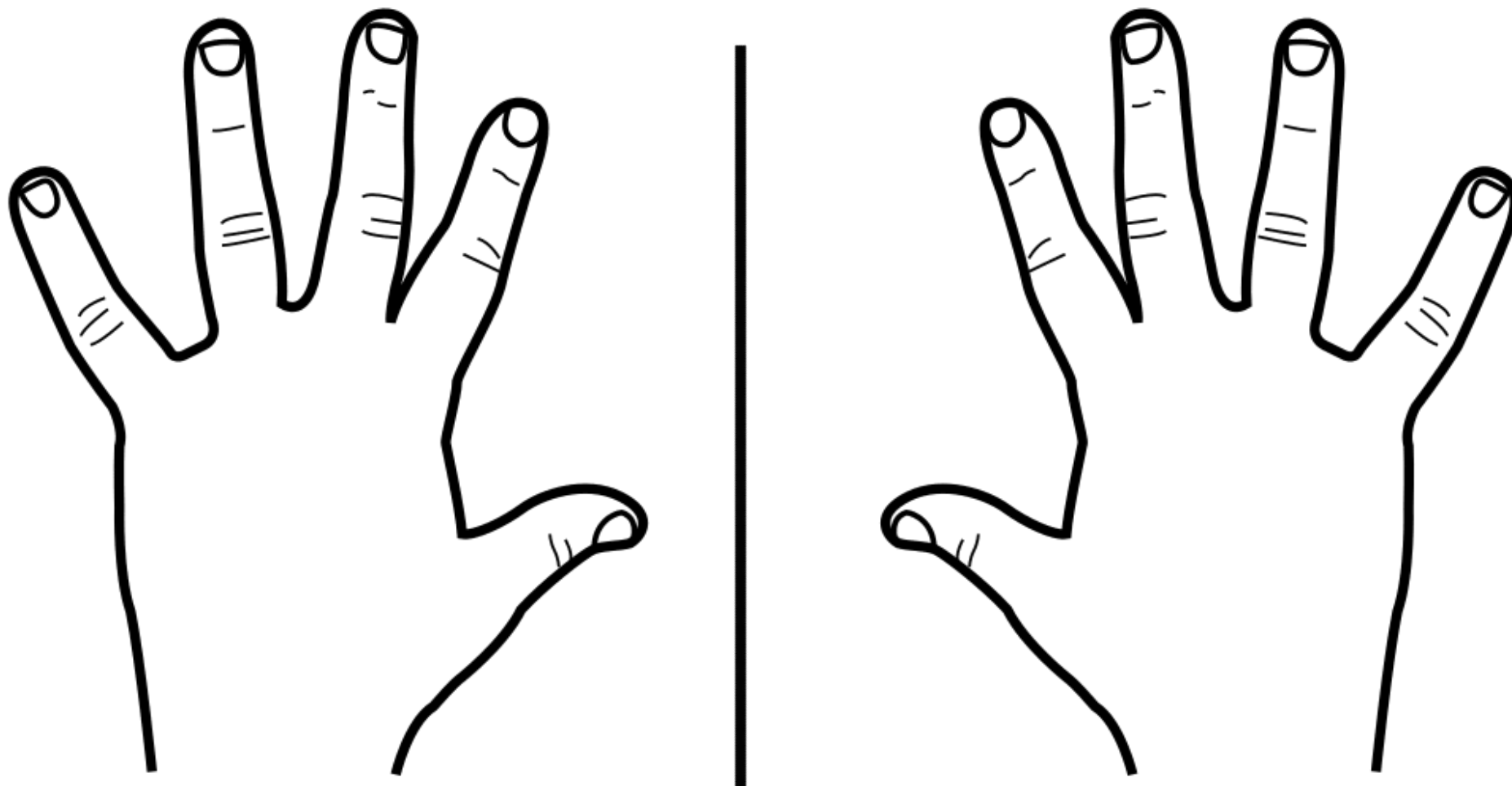


Posa 8 gometes a
l'ESQUERRA de la
línia.



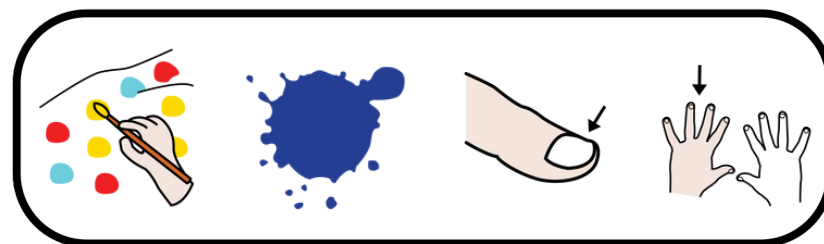


Pinta de roig las
ungles de la mà DRETA

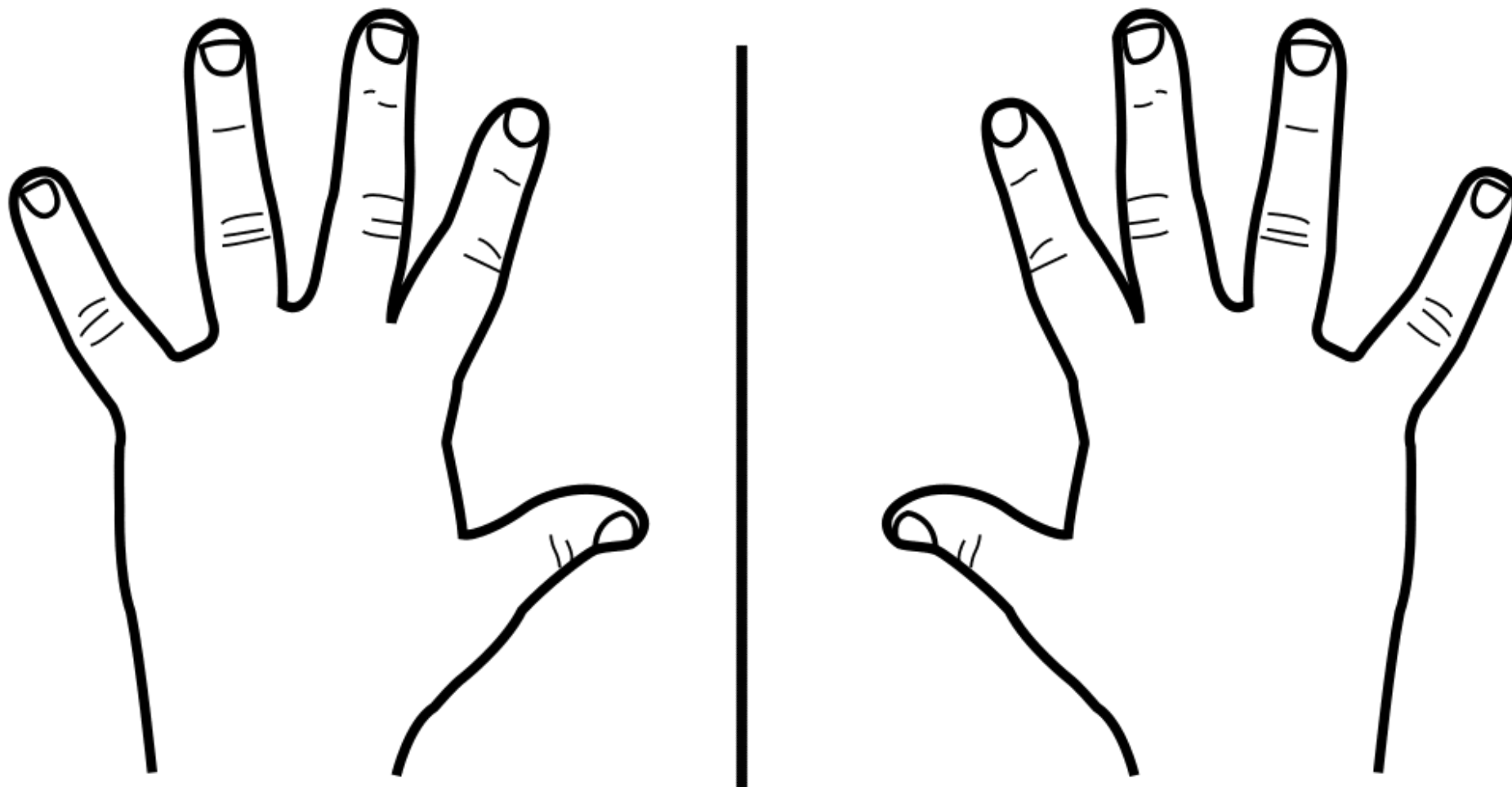


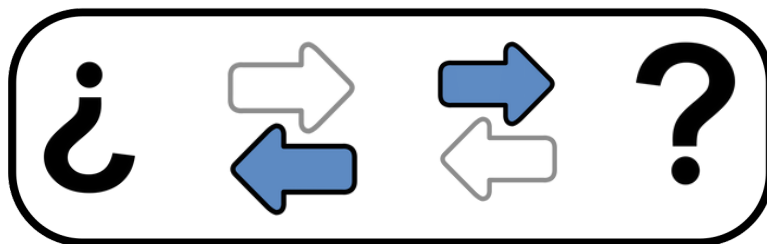
Autor pictogrames: Sergio Palao **Procedencia:** ARASAAC (<http://arasaac.org>) **Licencia:** CC (BY-NC-SA)

Autora: María Sarely Mateos Díaz www.educandocorazones.com

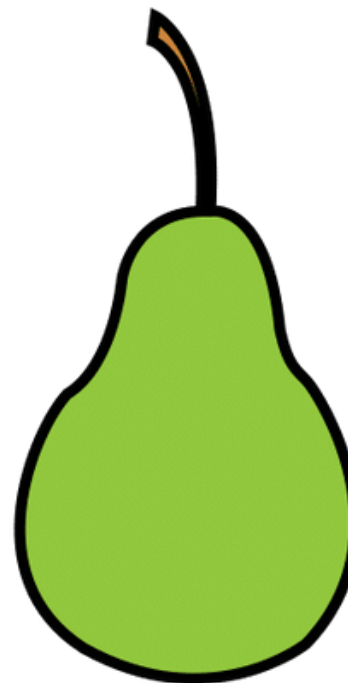
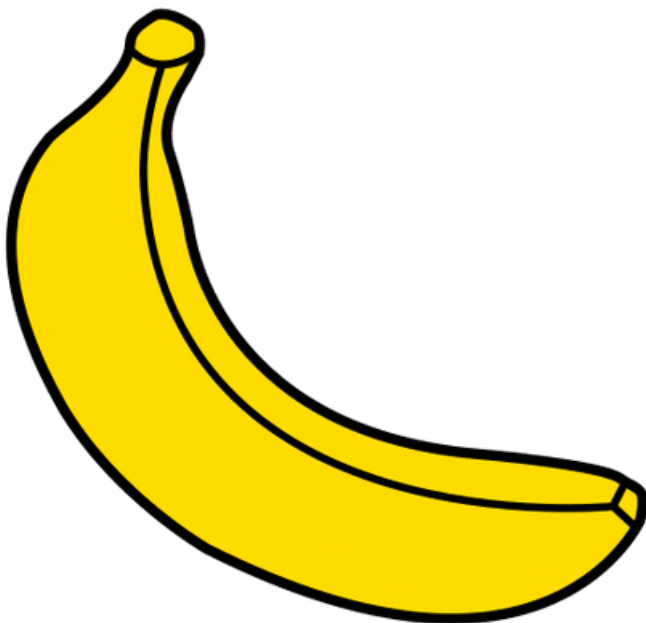


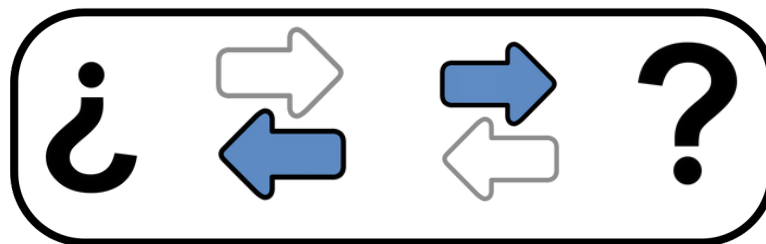
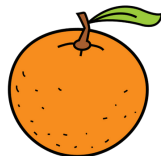
Pinta de blau les
ungles de la mà
ESQUERRA



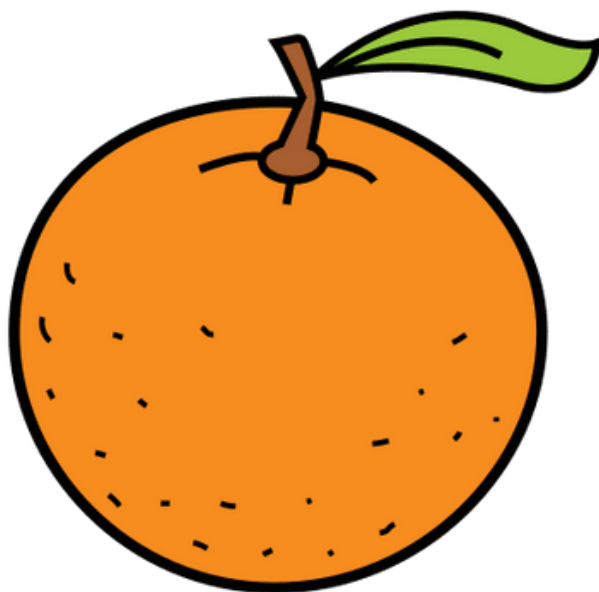


On està la pera? a la
DRETA o a l'ESQUERRA?



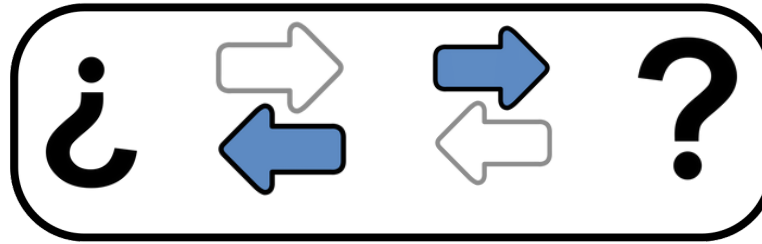
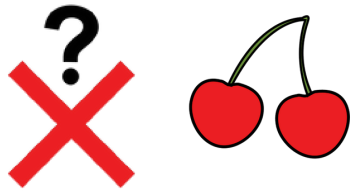


On està la taronja? a la
DRETA o a l'ESQUERRA?

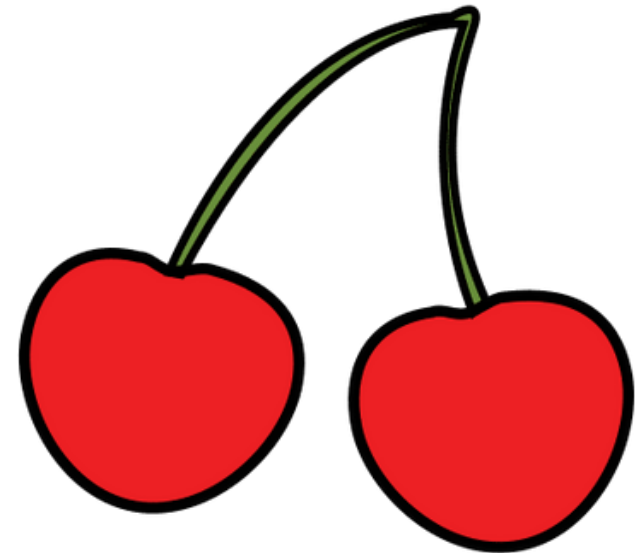
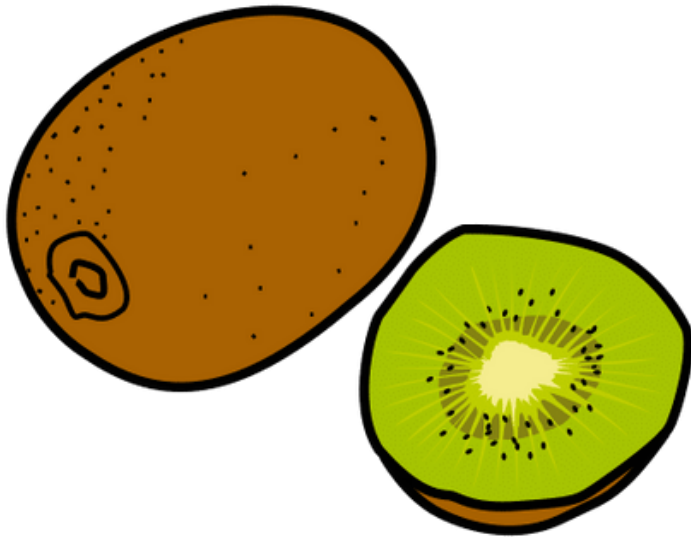


Autor pictogramas: Sergio Palao **Procedencia:** ARASAAC (<http://arasaac.org>) **Licencia:** CC (BY-NC-SA)

Autora: María Sarely Mateos Díaz www.educandocorazones.com

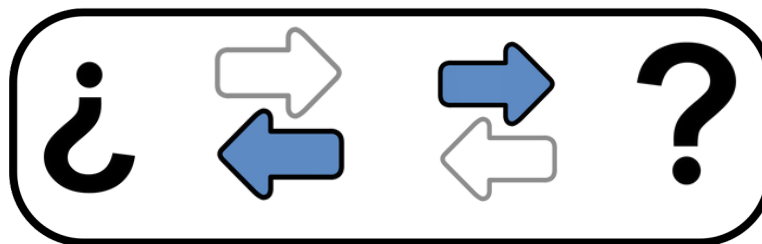
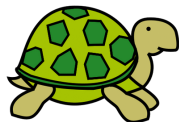


On estan les cireres? a la
DRETA o a l'ESQUERRA?

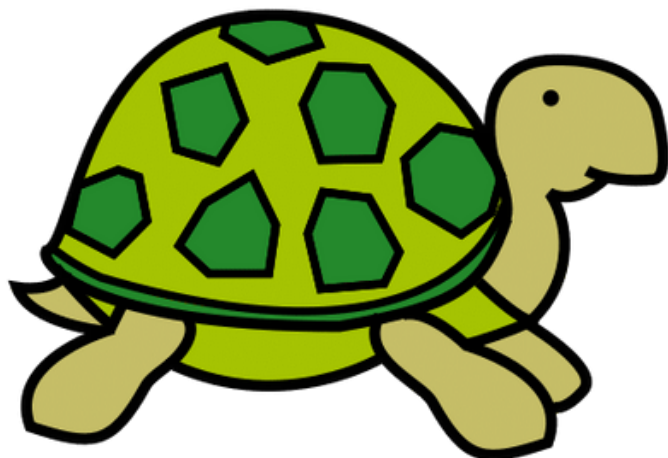


Autor pictogrames: Sergio Palao **Procedencia:** ARASAAC (<http://arasaac.org>) **Licencia:** CC (BY-NC-SA)

Autora: María Sarely Mateos Díaz www.educandocorazones.com

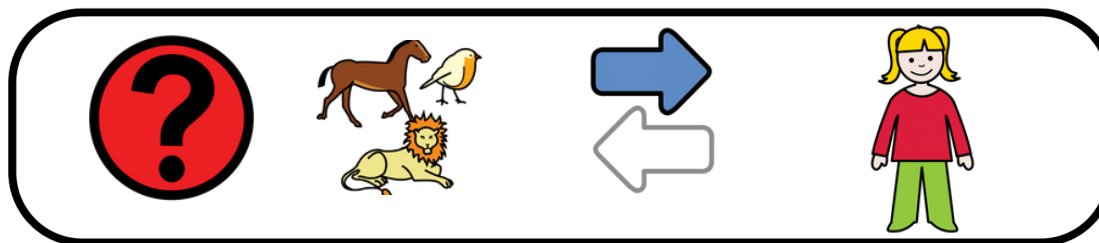


On està la tortuga? a la
DRETA o a l'ESQUERRA?

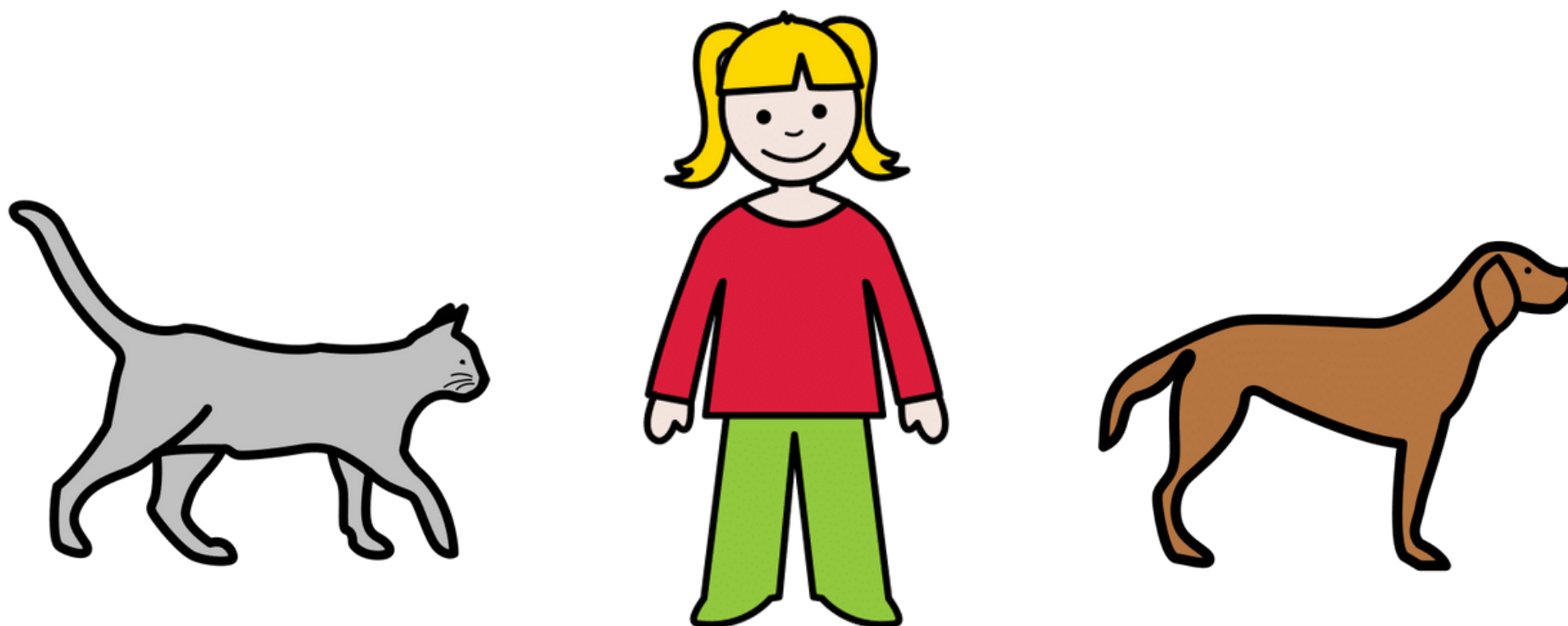


Autor pictogrames: Sergio Palao **Procedencia:** ARASAAC (<http://arasaac.org>) **Licencia:** CC (BY-NC-SA)

Autora: María Sarely Mateos Díaz www.educandocorazones.com

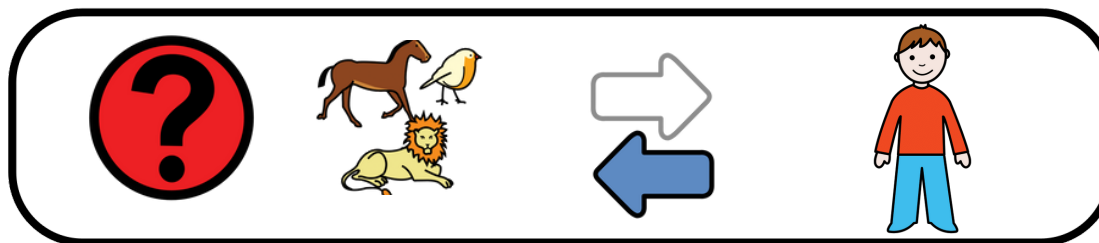


Quin animal està
a la DRETA de la
nena?

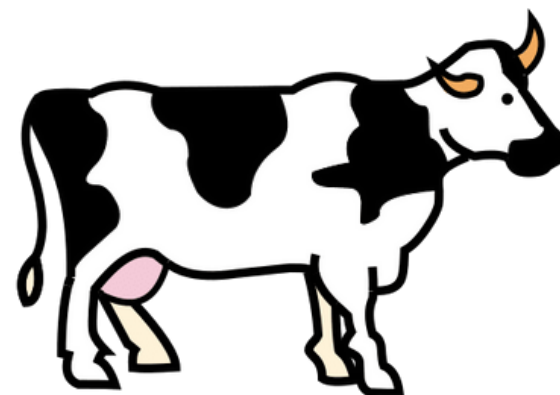
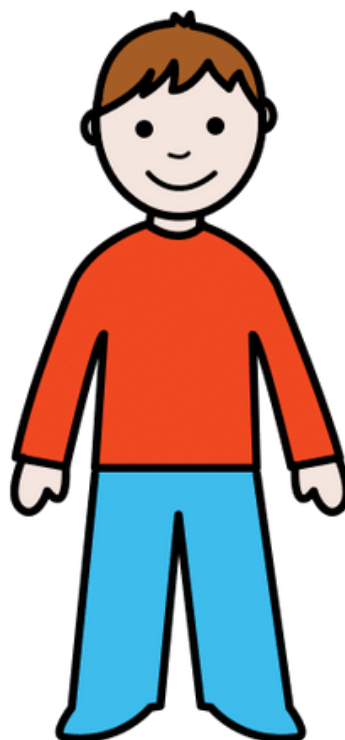
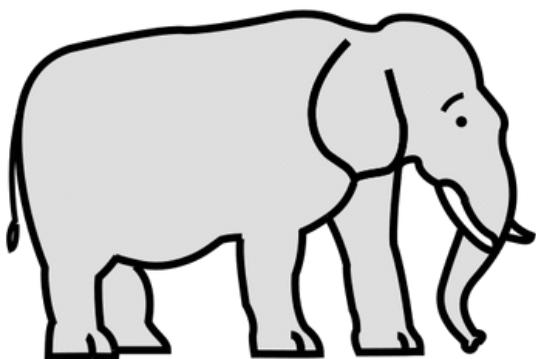


Autor pictogramas: Sergio Palao **Procedencia:** ARASAAC (<http://arasaac.org>) **Licencia:** CC (BY-NC-SA)

Autora: María Sarely Mateos Díaz www.educandocorazones.com

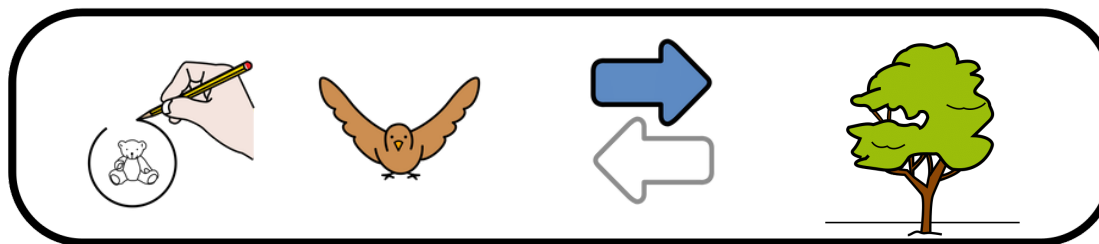


Quin animal està a
l'ESQUERRA del
nen?

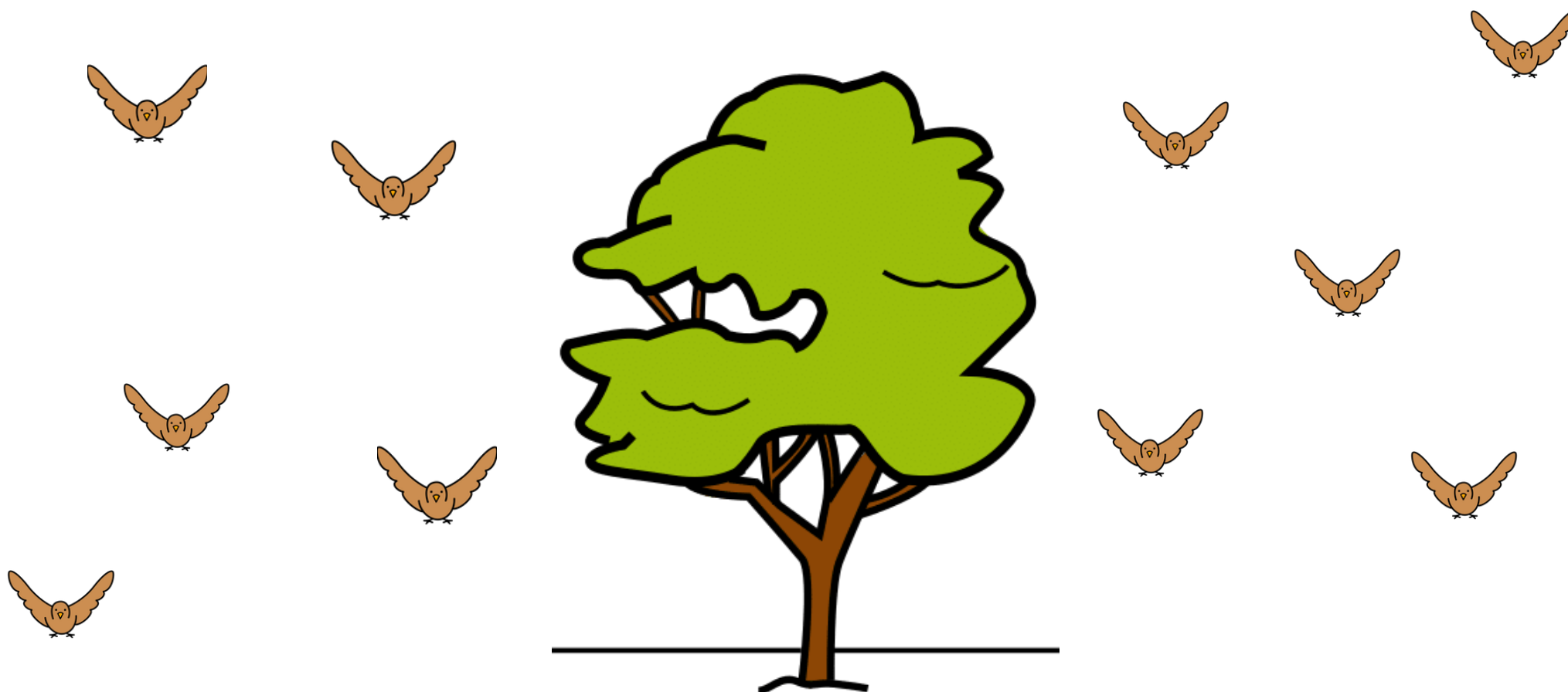


Autor pictogrames: Sergio Palao **Procedencia:** ARASAAC (<http://arasaac.org>) **Licencia:** CC (BY-NC-SA)

Autora: María Sarely Mateos Díaz www.educandocorazones.com

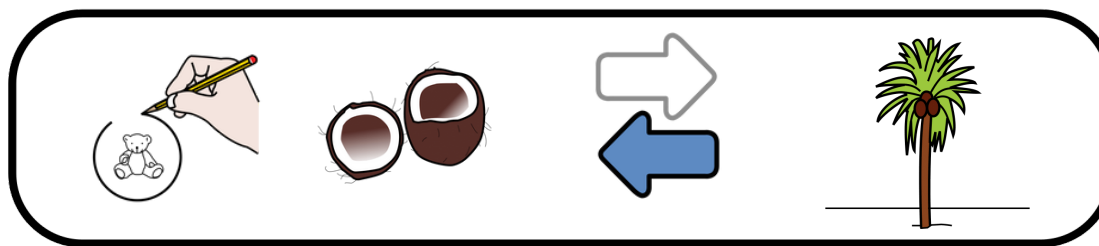


Encercla els
ocells de la
DRETA de l'arbre

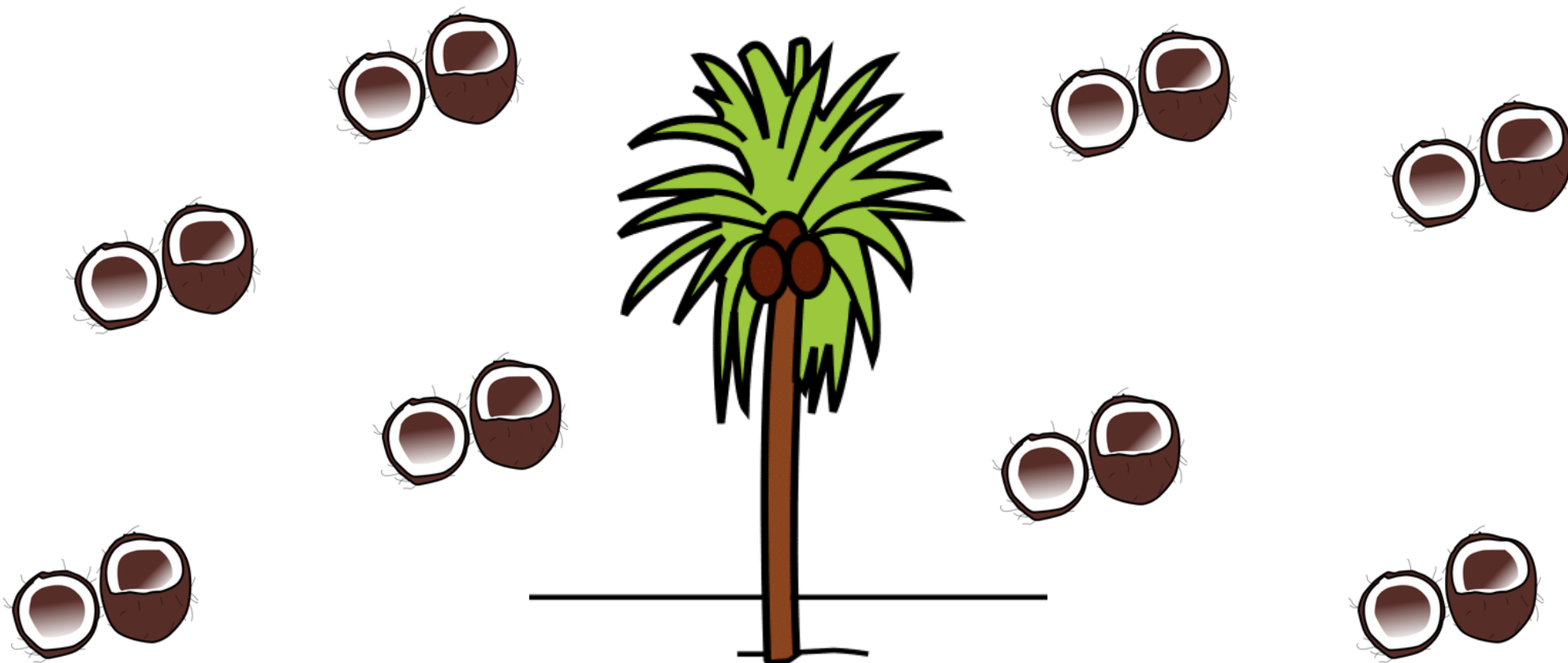


Autor pictogrames: Sergio Palao **Procedencia:** ARASAAC (<http://arasaac.org>) **Licencia:** CC (BY-NC-SA)

Autora: María Sarely Mateos Díaz www.educandocorazones.com

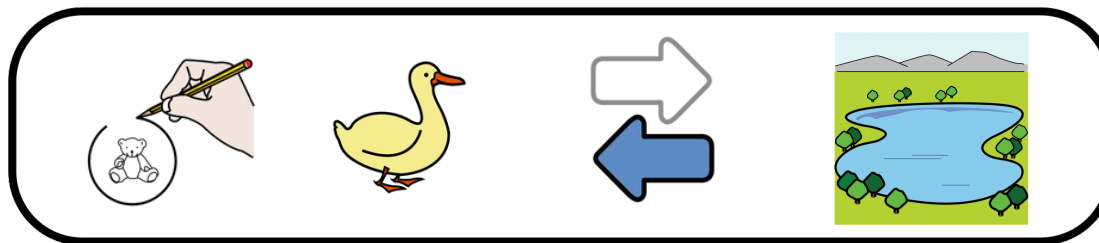


Encercla els cocos
de l'ESQUERRA de
la palmera

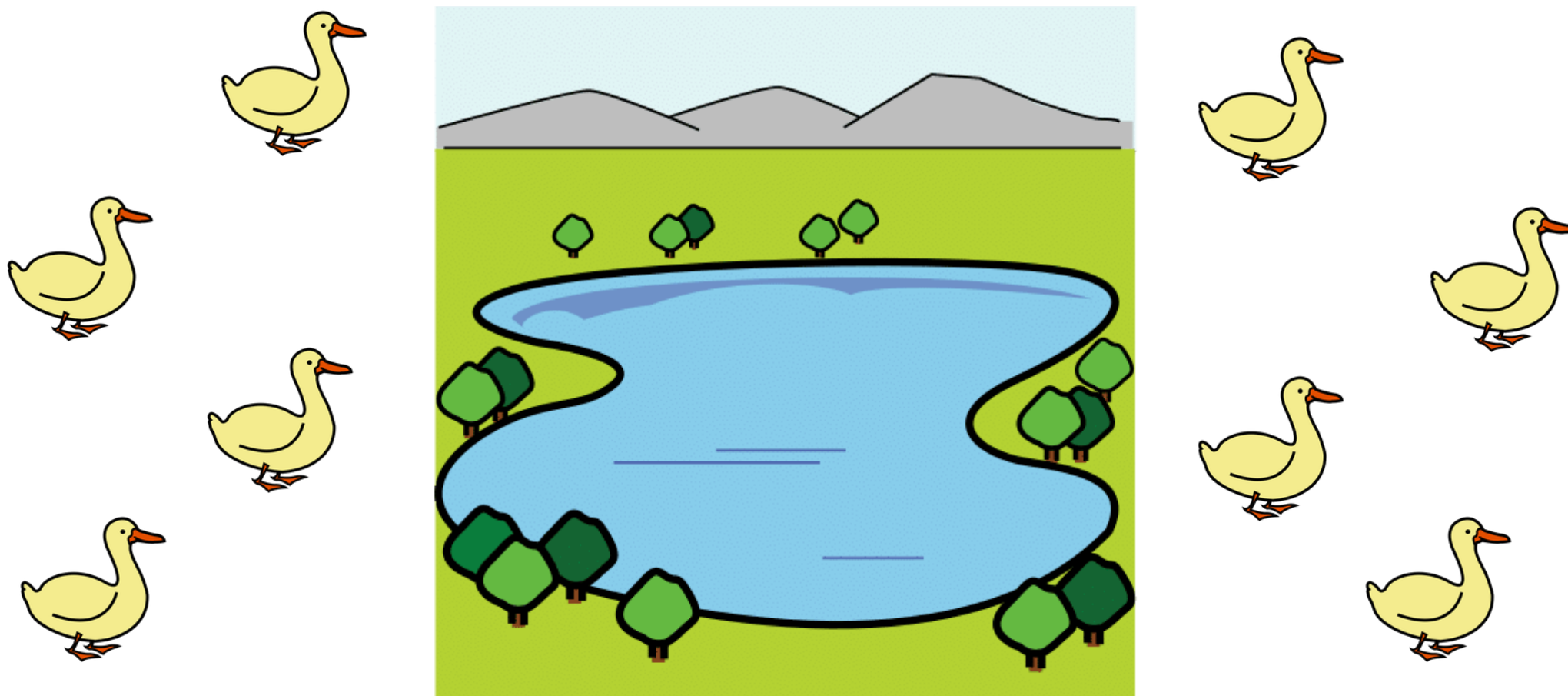


Autor pictogramas: Sergio Palao **Procedencia:** ARASAAC (<http://arasaac.org>) **Licencia:** CC (BY-NC-SA)

Autora: María Sarely Mateos Díaz www.educandocorazones.com



Encercla els ànecs
de l'ESQUERRA del
llac.

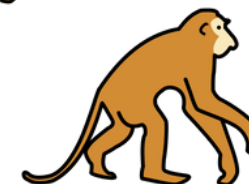
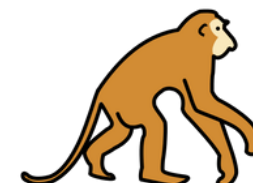
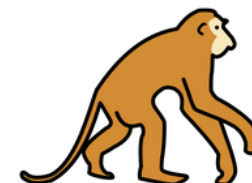
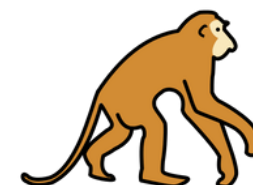
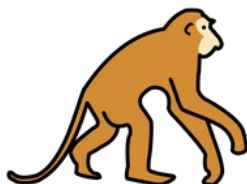
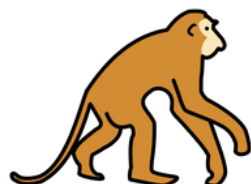
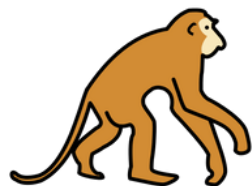


Autor pictogramas: Sergio Palao **Procedencia:** ARASAAC (<http://arasaac.org>) **Licencia:** CC (BY-NC-SA)

Autora: María Sarely Mateos Díaz www.educandocorazones.com

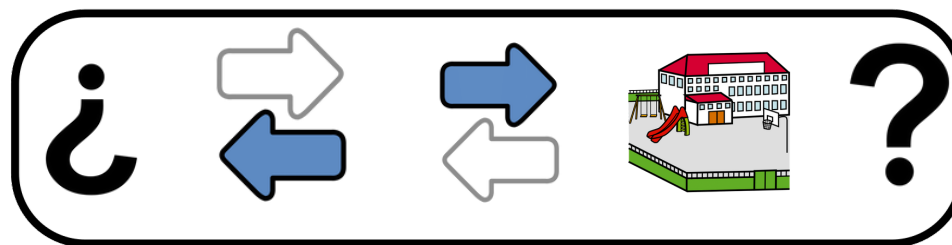


Encercla els micos
de la DRETA de la
selva

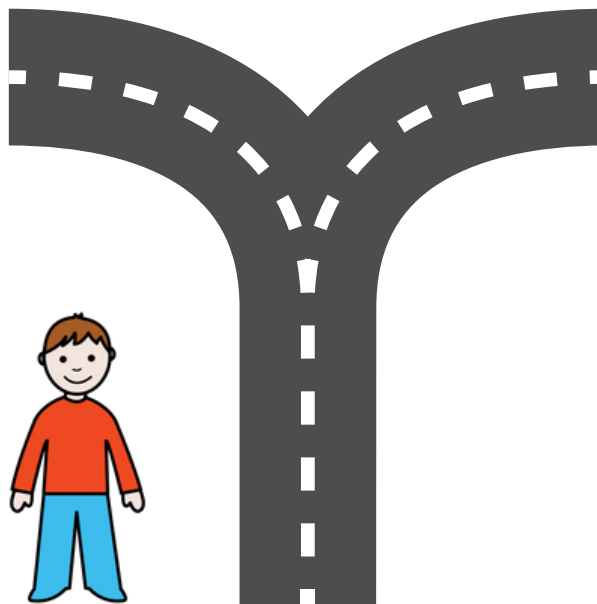


Autor pictogramas: Sergio Palao **Procedencia:** ARASAAC (<http://arasaac.org>) **Licencia:** CC (BY-NC-SA)

Autora: María Sarely Mateos Díaz www.educandocorazones.com

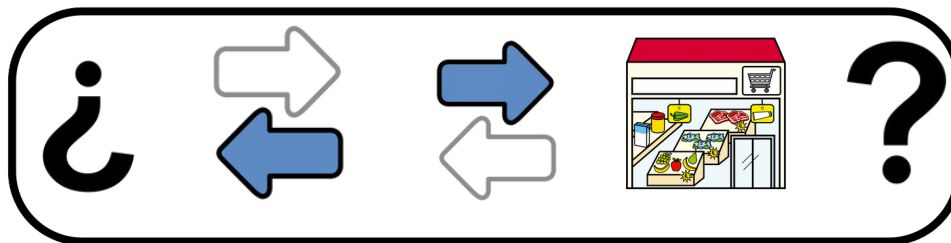


Quin camí ha d'agafar
el nen per anar a
l'escola?

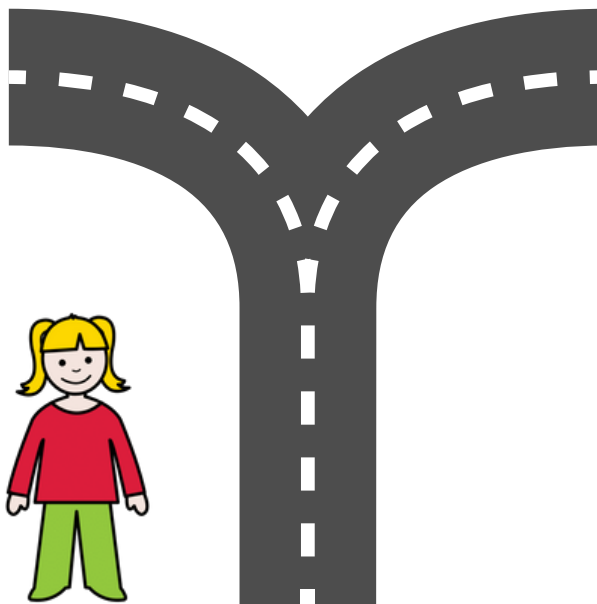


Autor pictogrames: Sergio Palao **Procedencia:** ARASAAC (<http://arasaac.org>) **Licencia:** CC (BY-NC-SA)

Autora: María Sarely Mateos Díaz www.educandocorazones.com

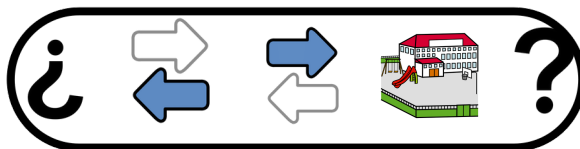


Quin camí ha d'agafar la nena per anar al supermercat?

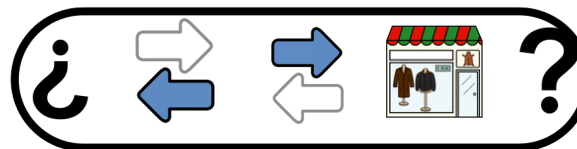


Autor pictogrames: Sergio Palao **Procedencia:** ARASAAC (<http://arasaac.org>) **Licencia:** CC (BY-NC-SA)

Autora: María Sarely Mateos Díaz www.educandocorazones.com

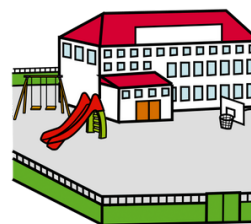
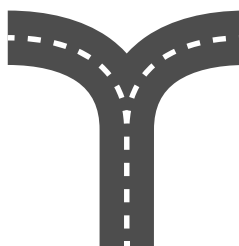
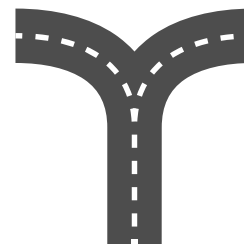


1º



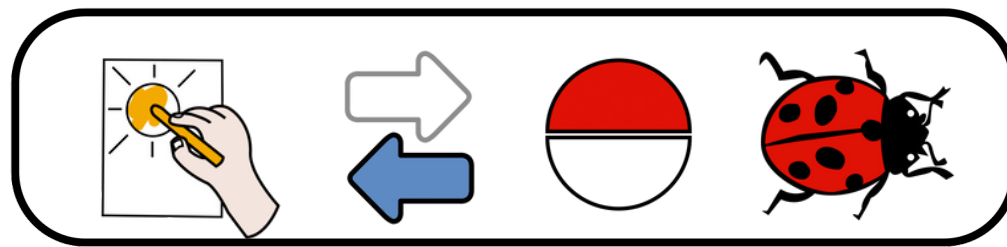
2º

Quin camí ha
d'agafar la nena per
anar a l'escola primer
i després a comprar-
se un vestit?

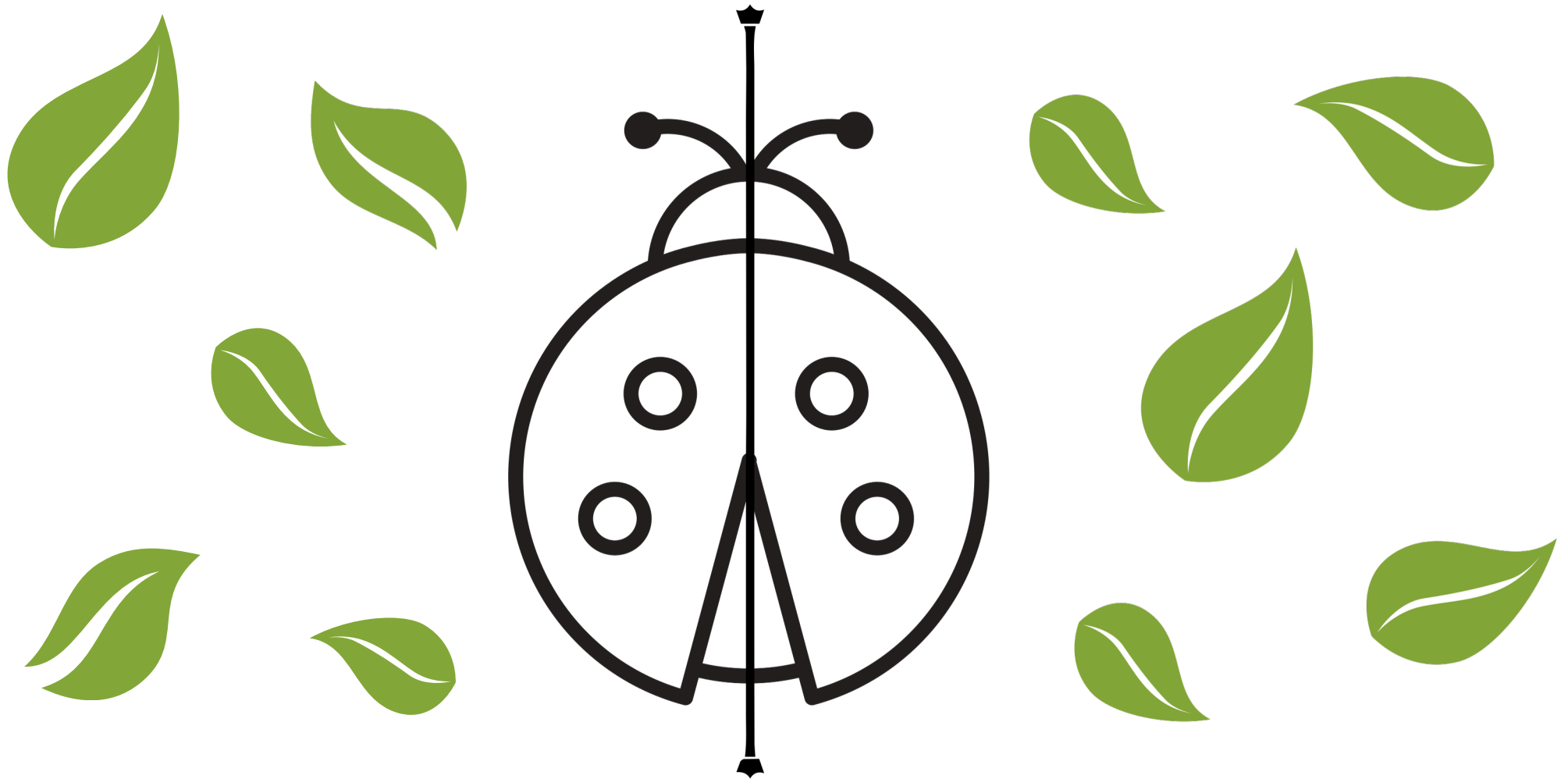


Autor pictogrames: Sergio Palao **Procedencia:** ARASAAC (<http://arasaac.org>) **Licencia:** CC (BY-NC-SA)

Autora: María Sarely Mateos Díaz www.educandocorazones.com

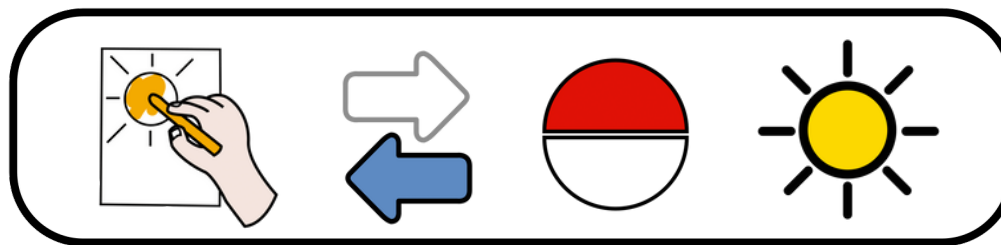


Pinta la part
ESQUERRA de la
marieta



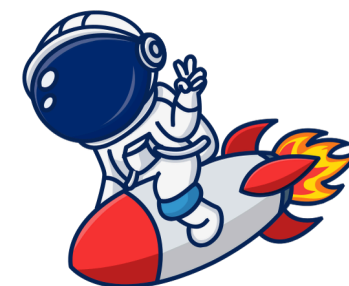
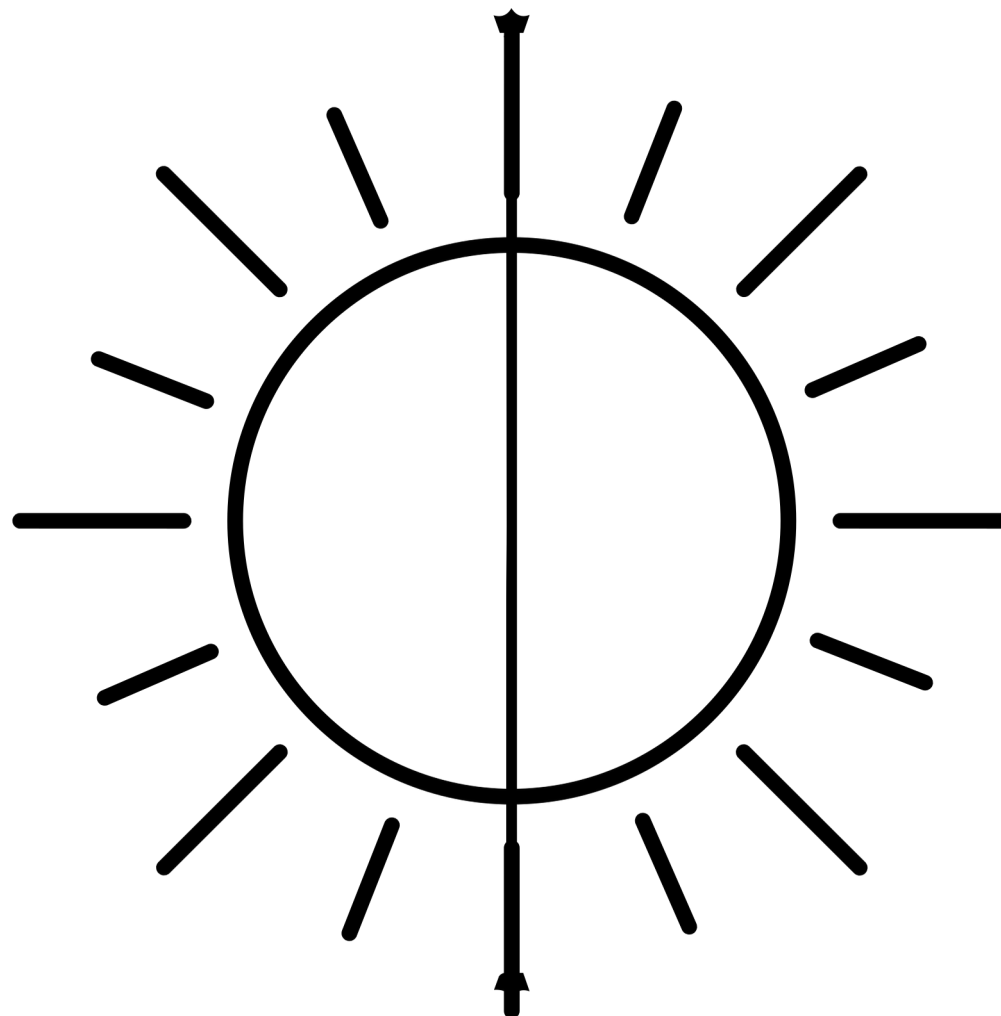
Autor pictogramas: Sergio Palao **Procedencia:** ARASAAC (<http://arasaac.org>) **Licencia:** CC (BY-NC-SA)

Autora: María Sarely Mateos Díaz www.educandocorazones.com



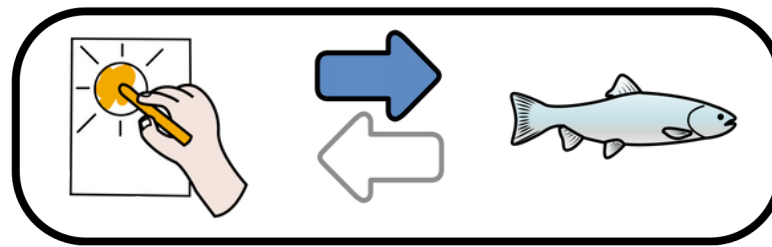
Pinta la part DRETA del sol.

Imatges: Canva

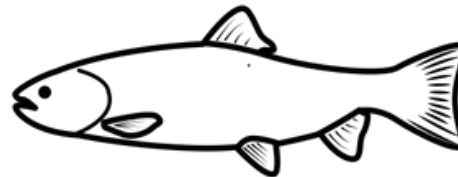
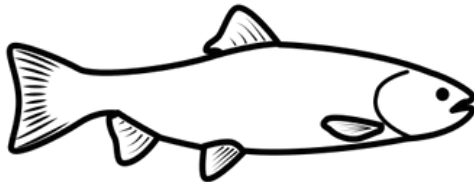
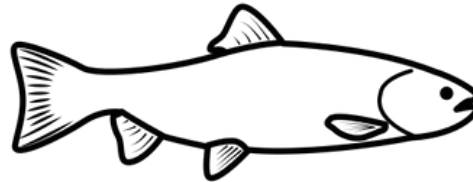
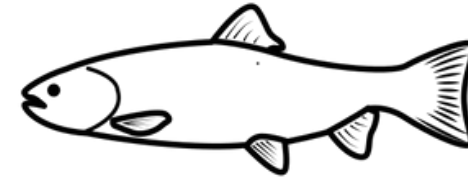
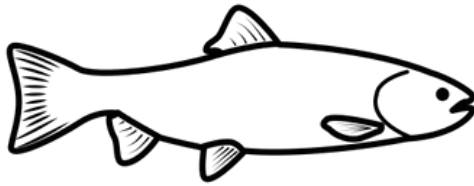


Autor pictogramas: Sergio Palao **Procedencia:** ARASAAC (<http://arasaac.org>) **Licencia:** CC (BY-NC-SA)

Autora: María Sarely Mateos Díaz www.educandocorazones.com

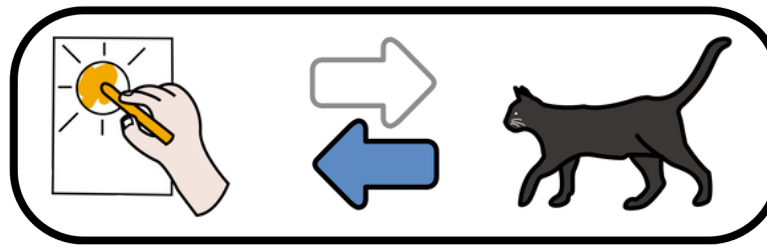


Pinta els peixos que
neden cap a la DRETA

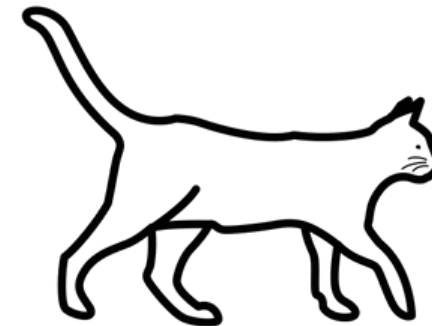
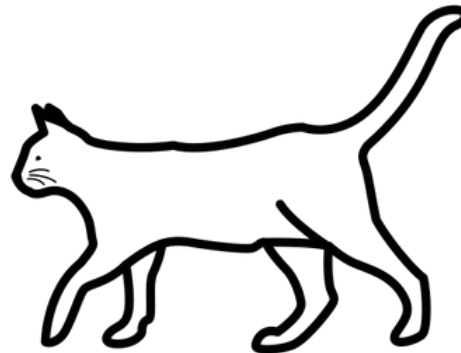
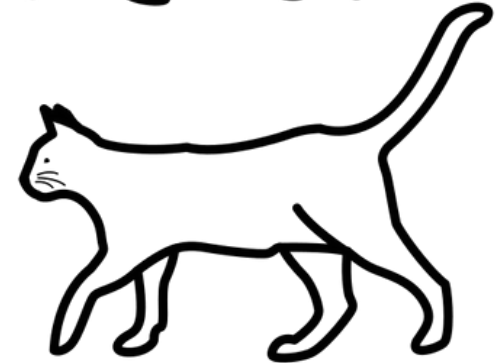
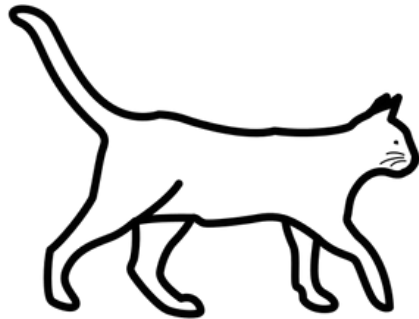
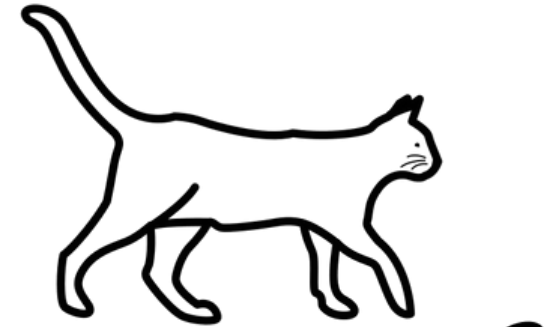
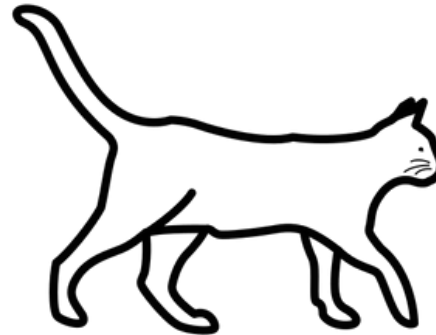
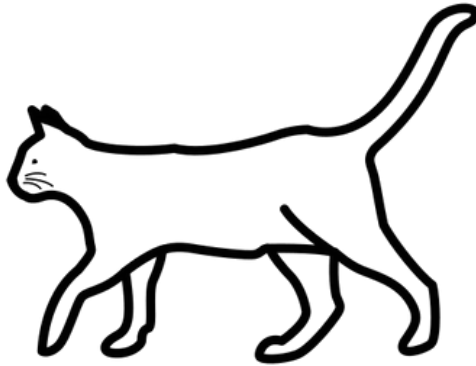


Autor pictogramas: Sergio Palao **Procedencia:** ARASAAC (<http://arasaac.org>) **Licencia:** CC (BY-NC-SA)

Autora: María Sarely Mateos Díaz www.educandocorazones.com



Pinta els gats que caminen
cap a l'ESQUERRA



Autor pictogramas: Sergio Palao **Procedencia:** ARASAAC (<http://arasaac.org>) **Licencia:** CC (BY-NC-SA)

Autora: María Sarely Mateos Díaz www.educandocorazones.com

"MATERIAL TEACCH" ESQUERRA-DRETA



Col·loca l'ocell a la



de l'arbre

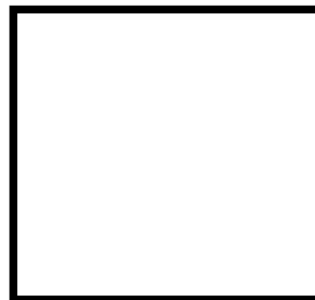


ESQUERRA

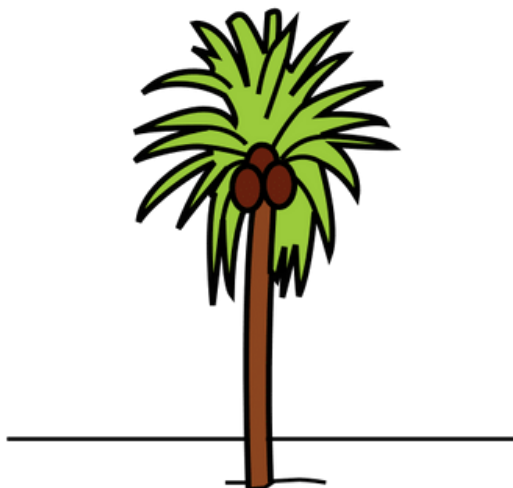
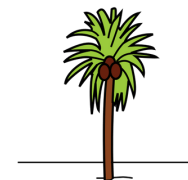


DRETA

Co·lloca el coco a la



de la palmera

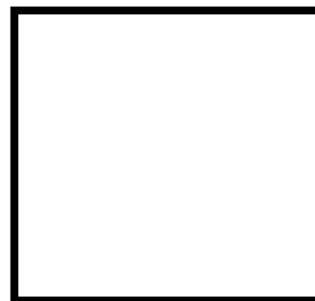


ESQUERRA

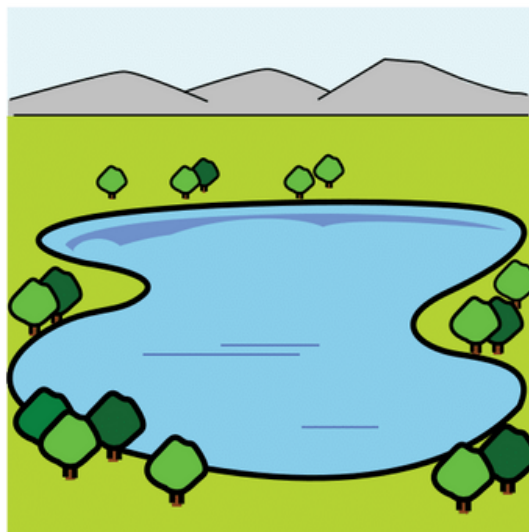
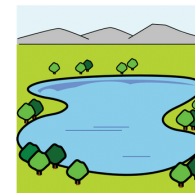


DRETA

Col·loca l'ànec a la



del llac

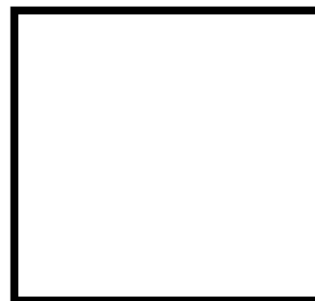
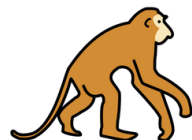


ESQUERRA



DRETA

Coloca el mono a la



de la selva



ESQUERRA



DRETA

