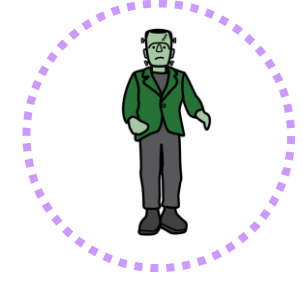
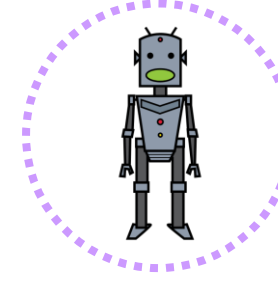
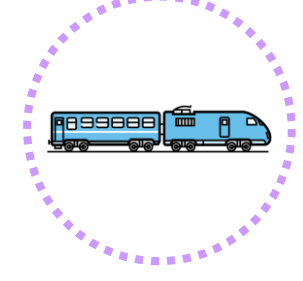
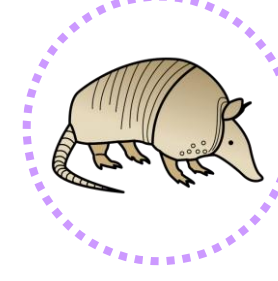
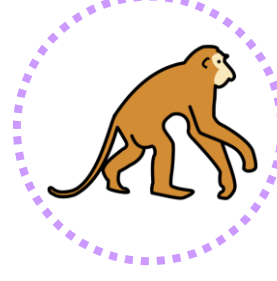
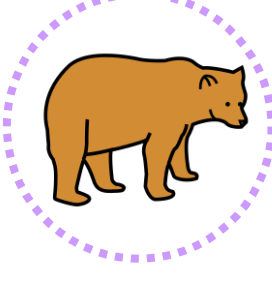
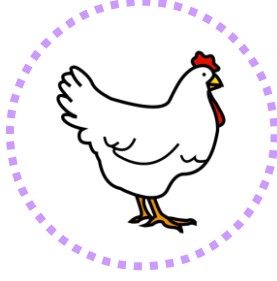
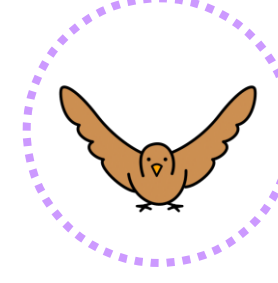
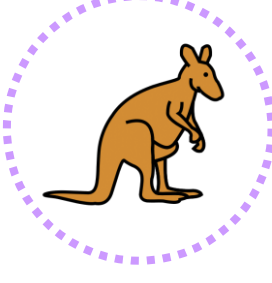
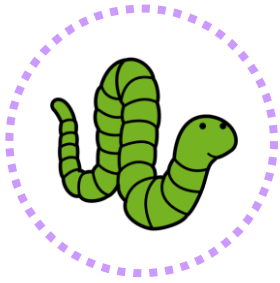
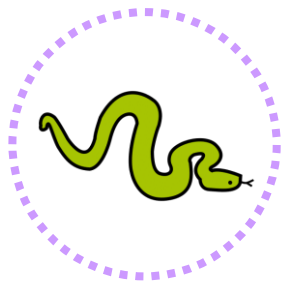
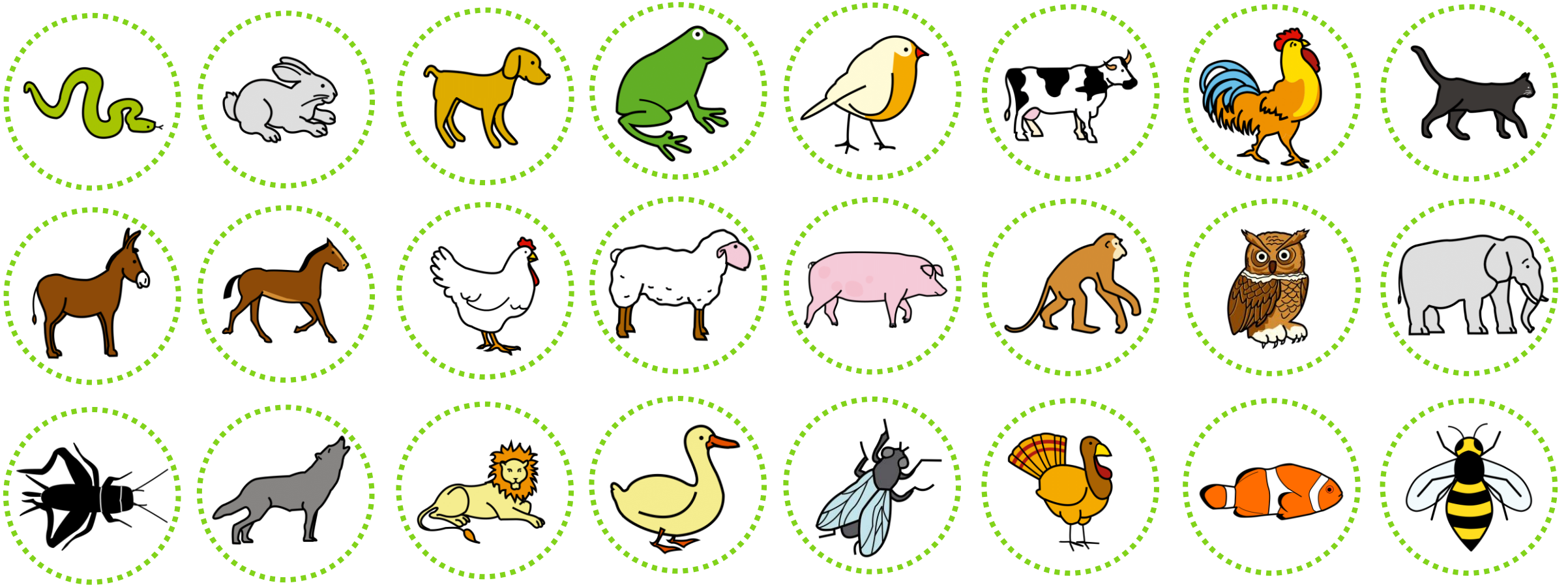


# RULETA: Imitaciones



# RULETA: Onomatopeyas





SSSHHH



IH IH



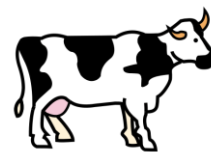
GUAU  
GUAU



CROAC  
CROAC



PIO PIO



MUUUU



KIKIRIKI



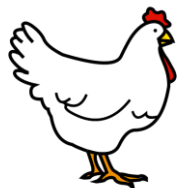
MIAU  
MIAU



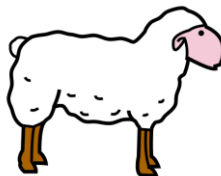
HIAAAA



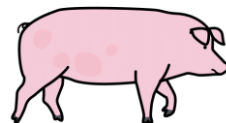
HIIII



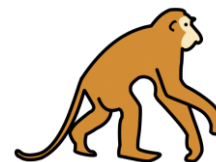
CLO CLO CLO



BEEEE



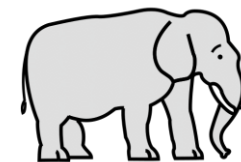
OINK  
OINK



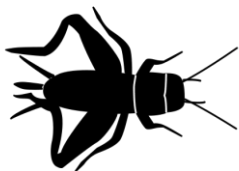
UA UA UA



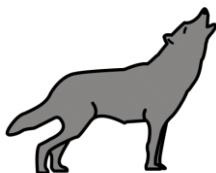
HUU HUU



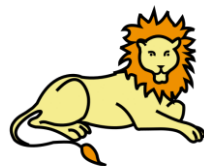
BRUUUU



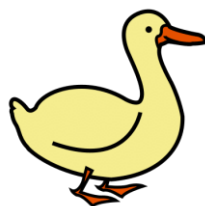
CRI CRI



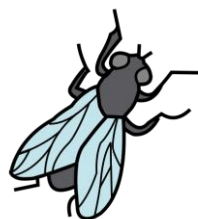
AUUU



GRRRR



CUAC  
CUAC



ZZZZZ



GLU GLU



GLUP  
GLUP



BZZZZ