


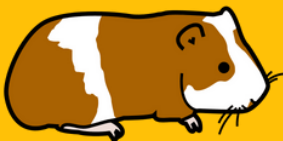
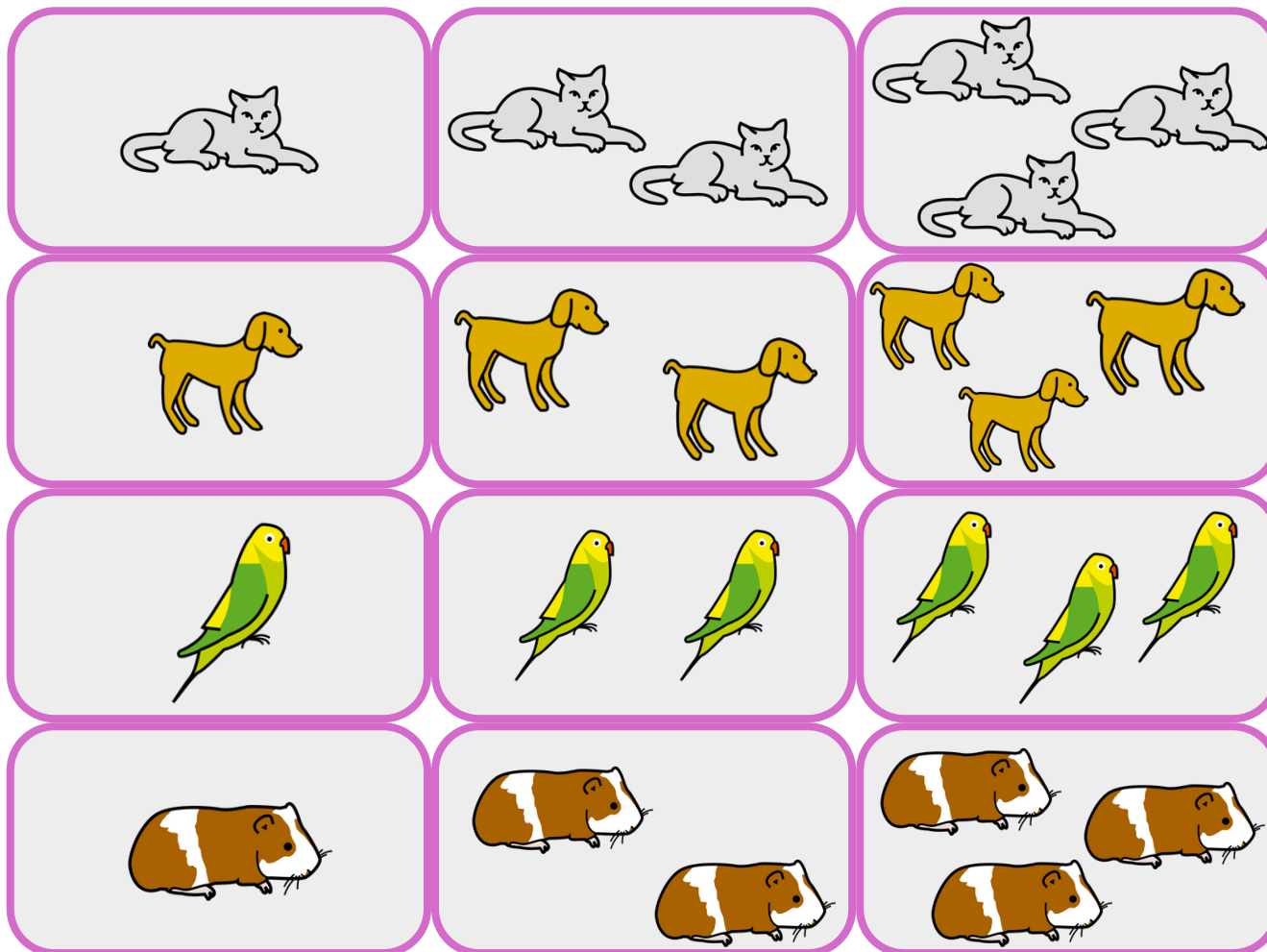
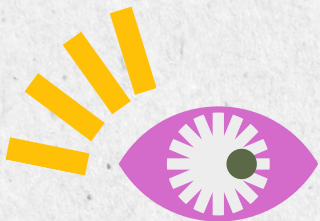


CUADRO DOBLE ENTRADA: ANIMALES DOMÉSTICOS







	1	2	3
			
			
			
			

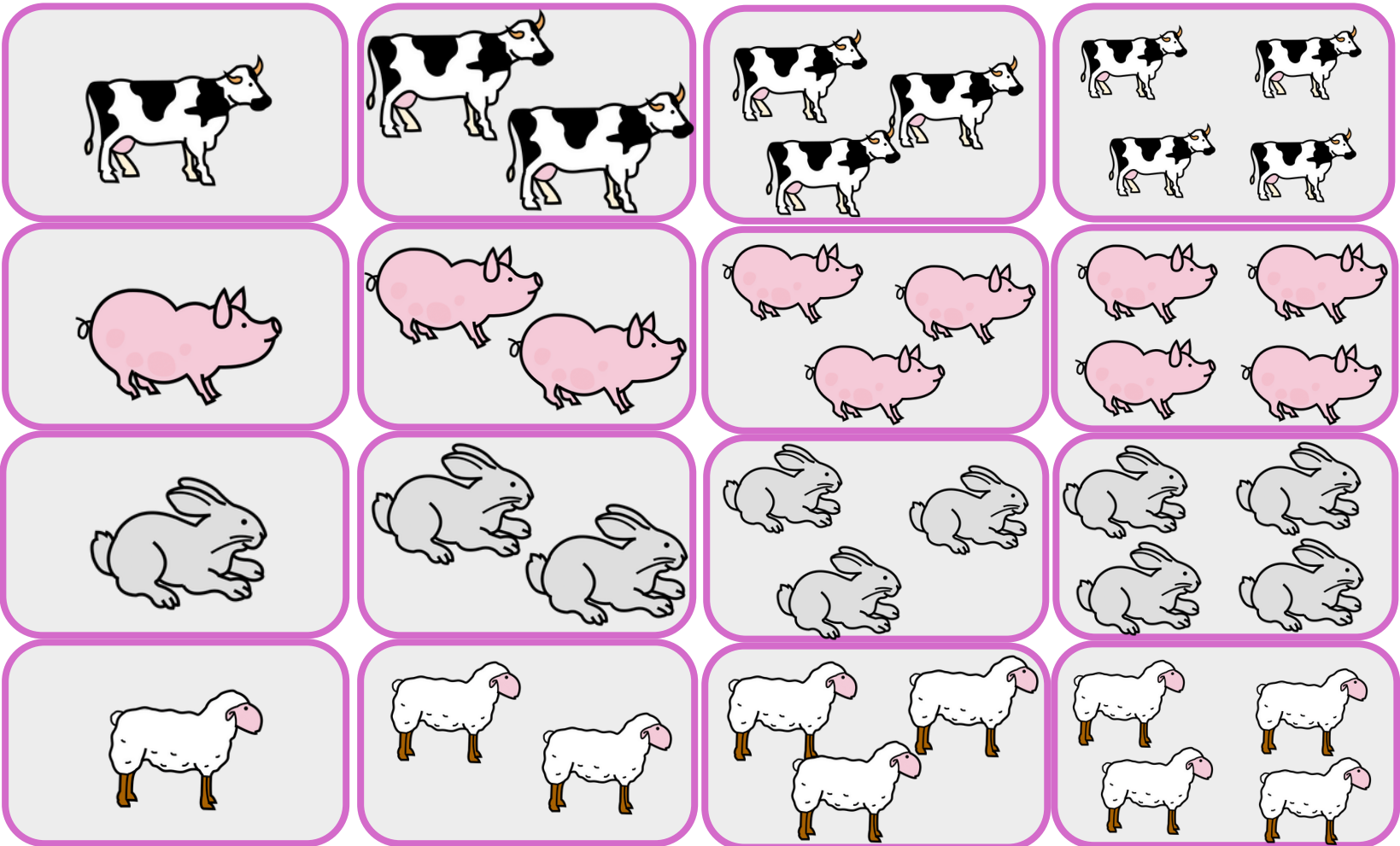




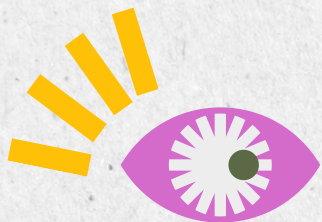
CUADRO DOBLE ENTRADA: ANIMALES DE GRANJA



	1	2	3	4
				
				
				
				







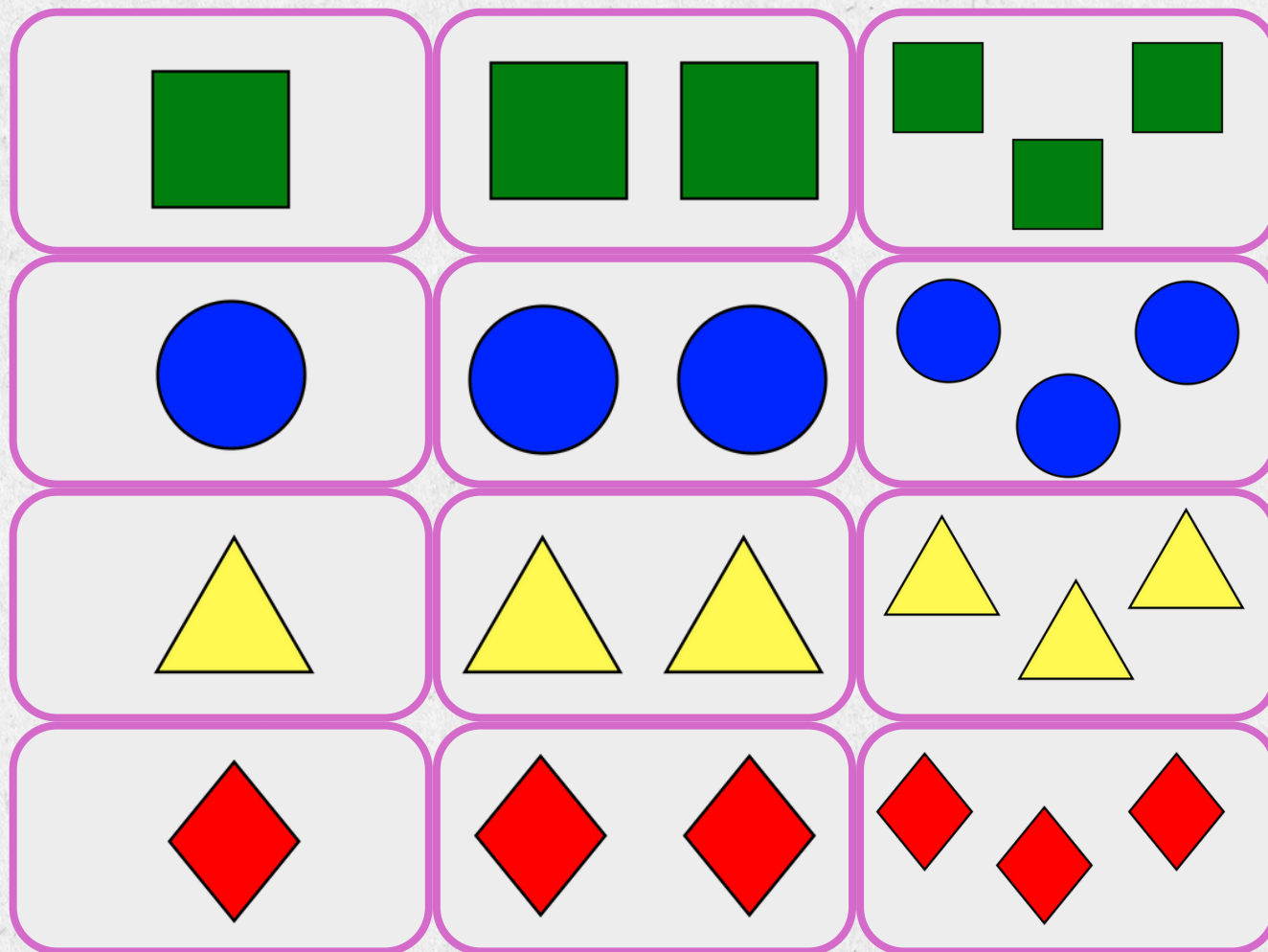
Autor pictogramas: Sergio Palao. Origen: ARASAAC (<http://www.arasaac.org>). Licencia: CC (BY-NC-SA).Autora: Maria Jesus Moros.

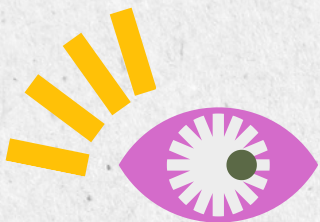


CUADRO DOBLE ENTRADA: FIGURAS GEOMÉTRICAS



	1	2	3
			
			
			
			

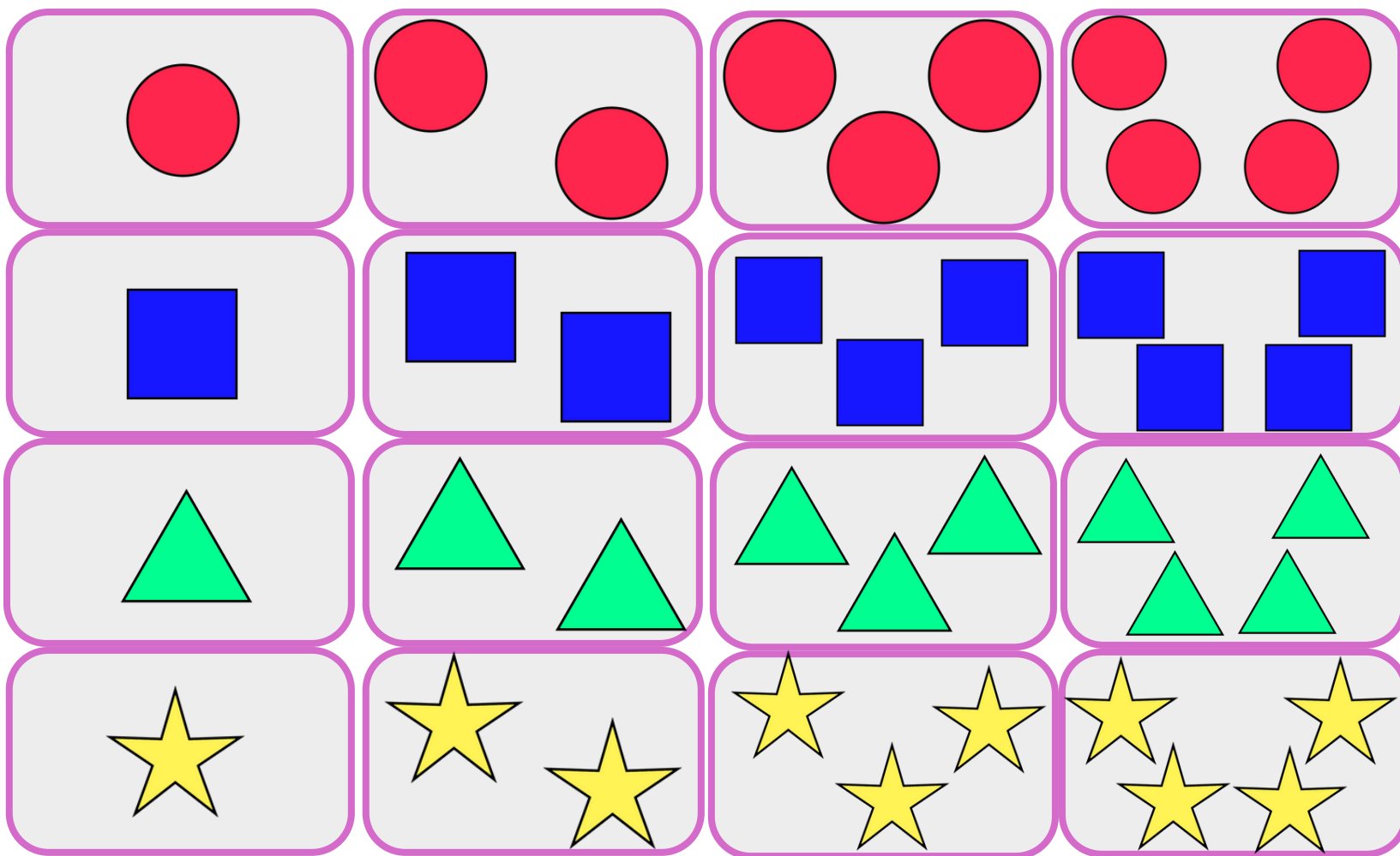




CUADRO DOBLE ENTRADA: FIGURAS GEOMÉTRICAS.



	1	2	3	4



Autor pictogramas: Sergio Palao. Origen: ARASAAC (<http://www.arasaac.org>). Licencia: CC (BY-NC-SA).Autora: Maria Jesus Moros.