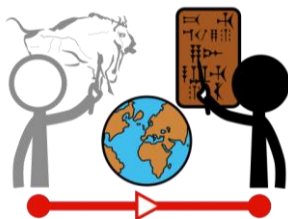
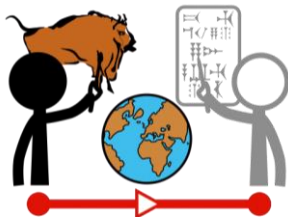


Uní según corresponde y luego escribí las palabras.

**PREHISTORIA**



**HISTORIA**



**PREHISTORIA**

**HISTORIA**

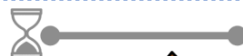
Copíá las edades en que se divide la prehistoria



**EDAD DE PIEDRA**

\_\_\_\_\_

\_\_\_\_\_



**EDAD DE LOS  
METALES**

\_\_\_\_\_

\_\_\_\_\_

Uní según corresponde.

EDAD DE PIEDRA

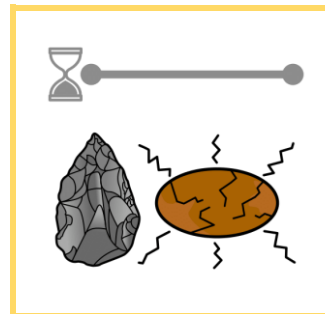
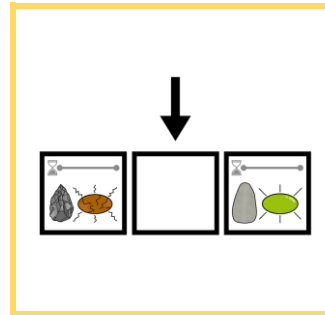
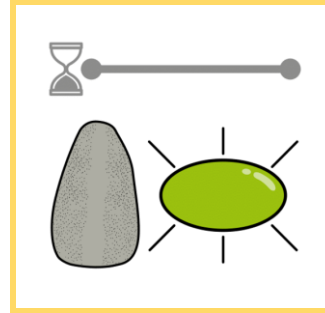
HISTORIA

EDAD DE LOS  
METALES

PREHISTORIA



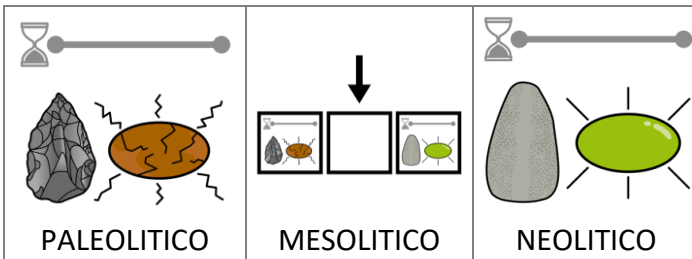
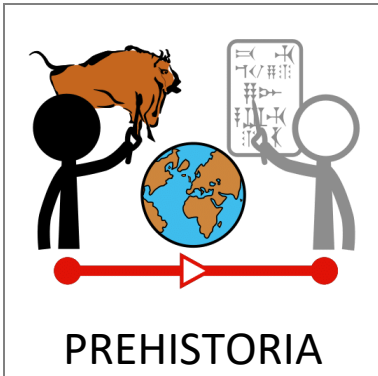
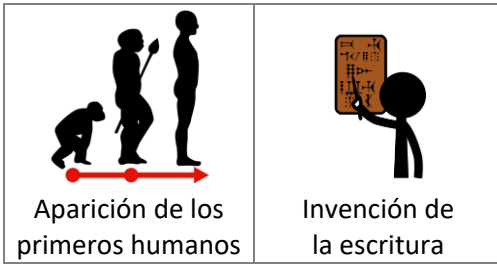
Uní según corresponde.



MESOLITICO

PALEOLITICO

NEOLITICO

Copíá los períodos en que se divide la edad piedra

**PALEOLITICO**

-----

**MESOLITICO**

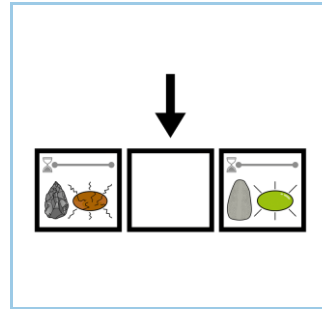
-----

**NEOLITICO**

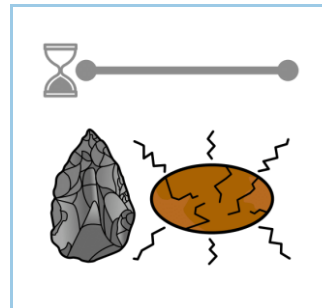
-----

Uní según corresponde.

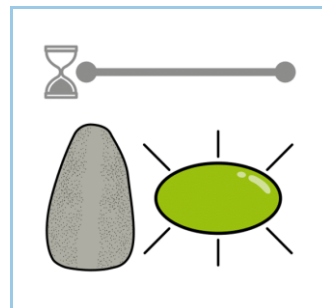
PALEOLITICO



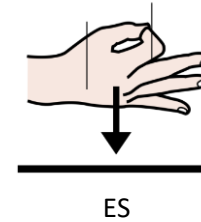
MESOLITICO



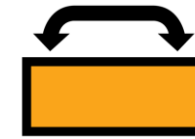
NEOLITICO



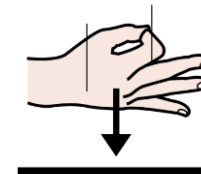
Pegá para completar las oraciones.



ES



UN PERIODO



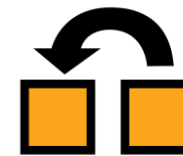
ES



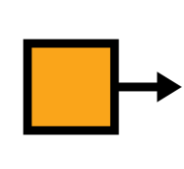
EL PERIODO



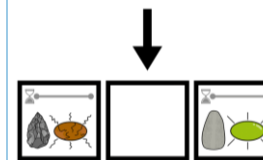
VA



DESDE

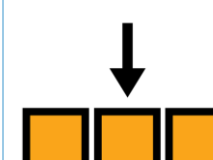


HASTA



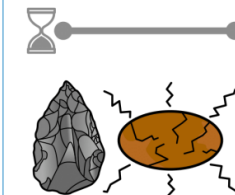
EL MESOLITICO

2.500.000  
a.C



INTERMEDIO

10.000  
a.C



EL PALEOLITICO



MAS LARGO

