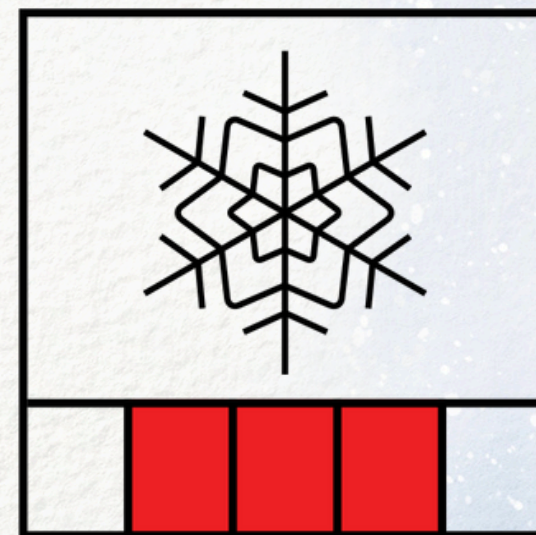
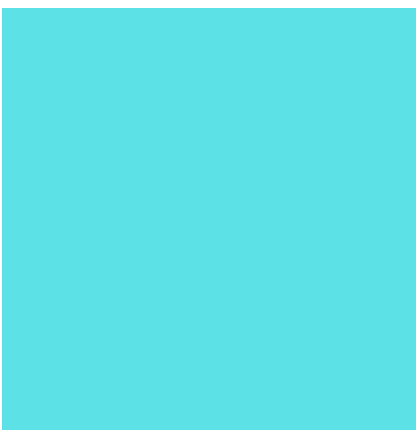
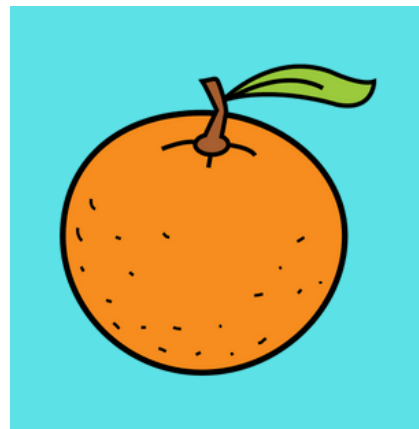
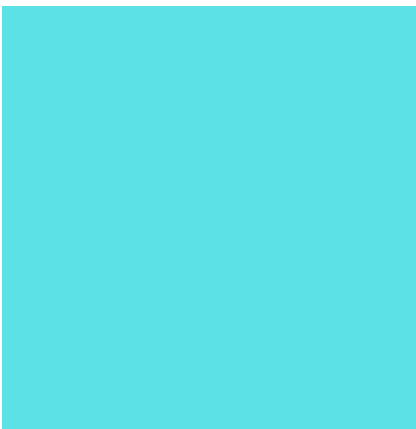
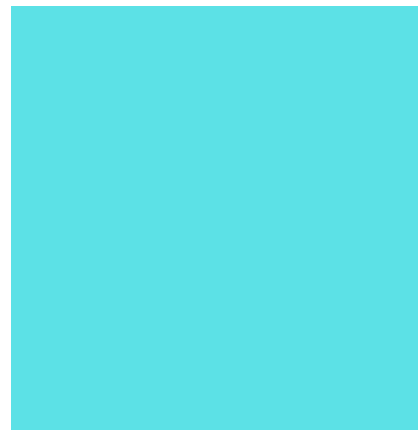
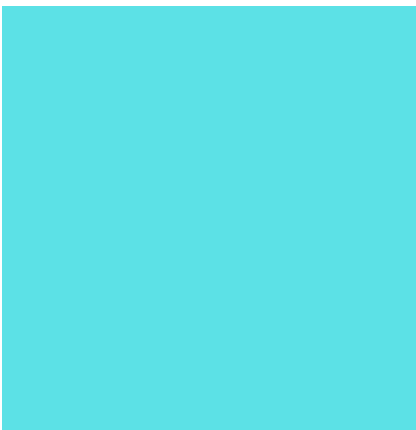
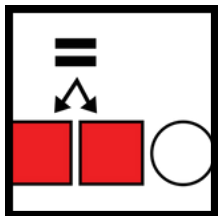


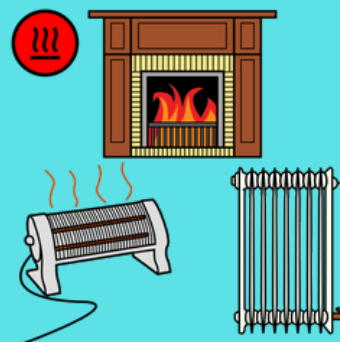
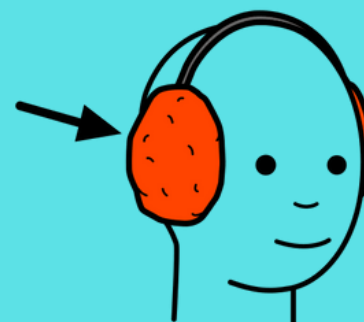
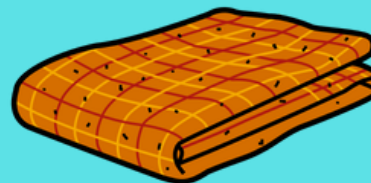
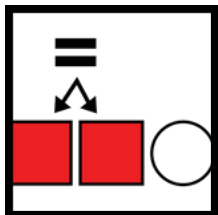
QUADERNO D'INVERNO

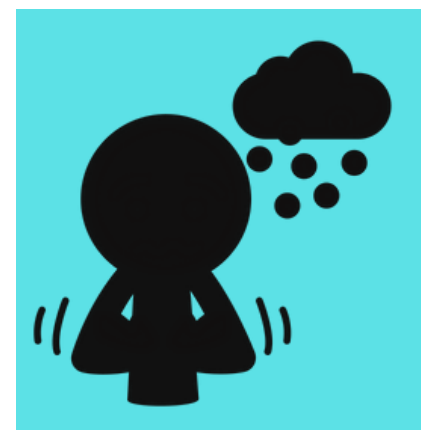
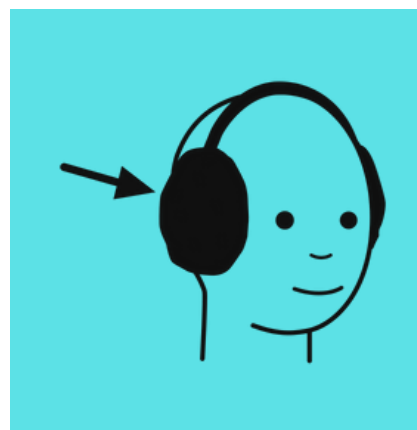
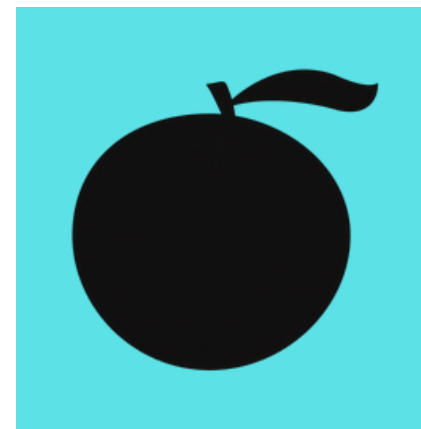
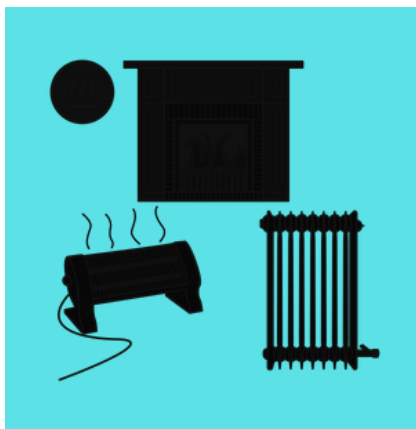
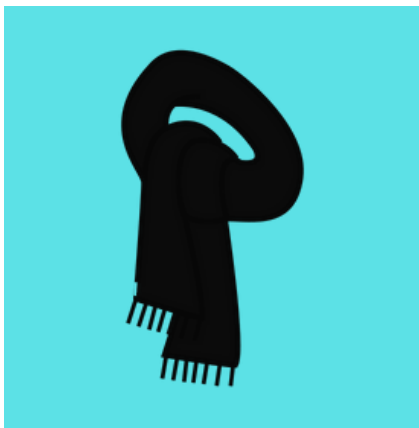


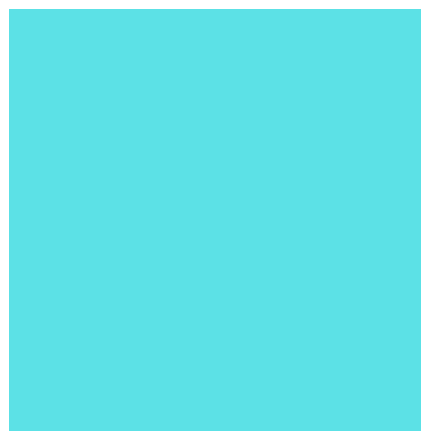
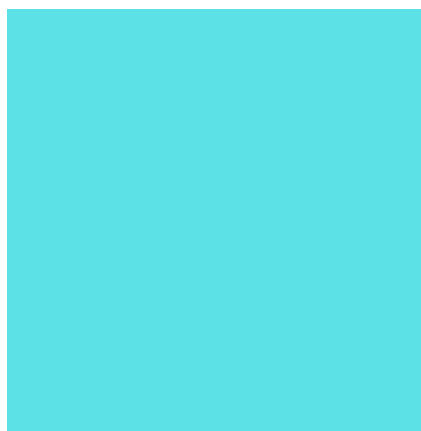
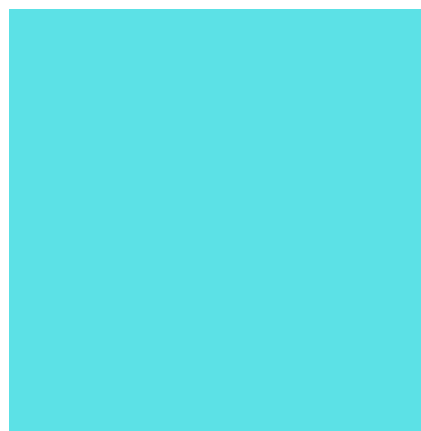
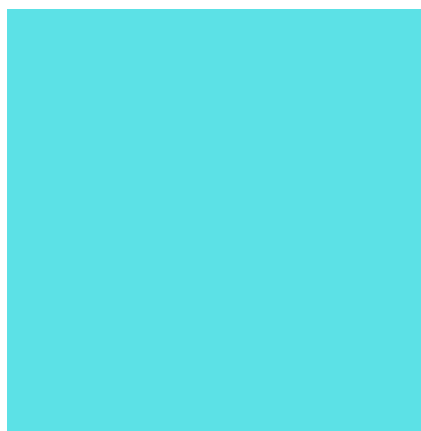
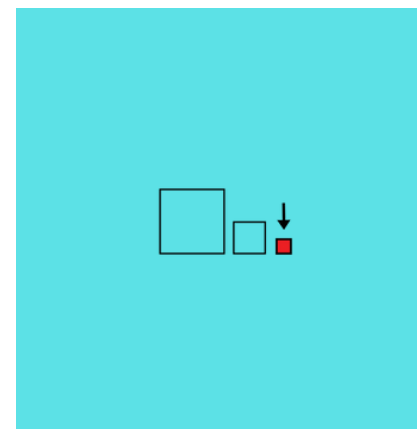
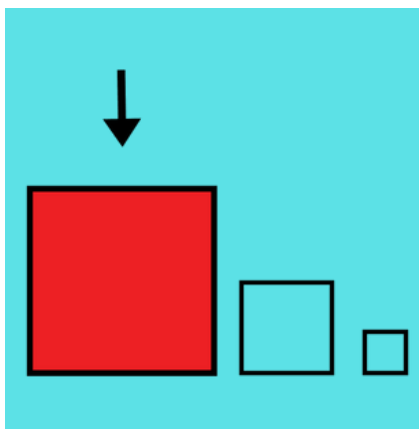
Autor pictogramas: Sergio Palao Procedencia: ARASAAC (<http://arasaac.org>)

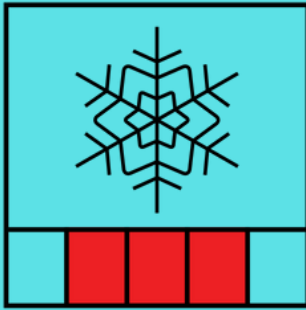
Autora: Anna Sabater Traducido por Vincenzo Gramegna per il CTS di Bologna











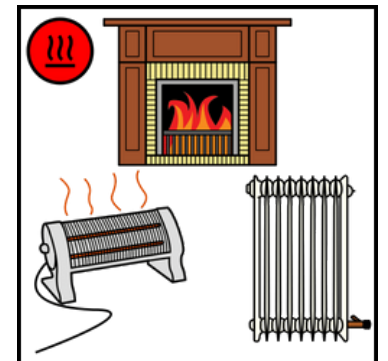
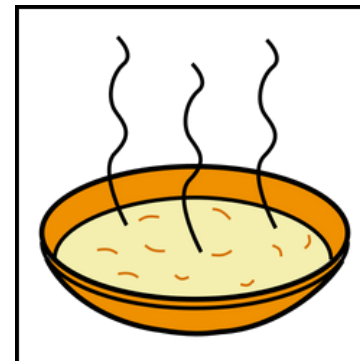
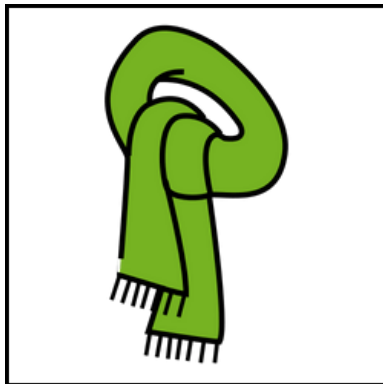
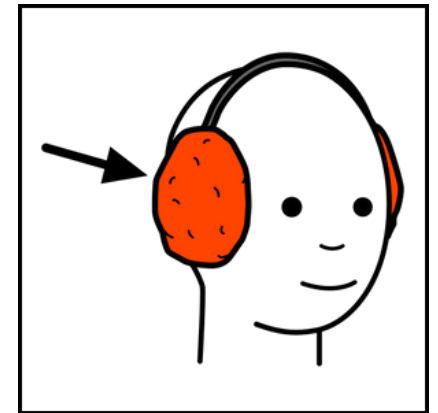
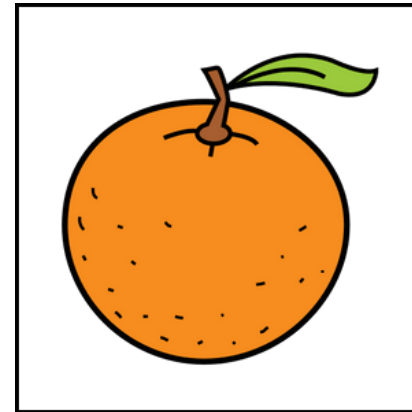
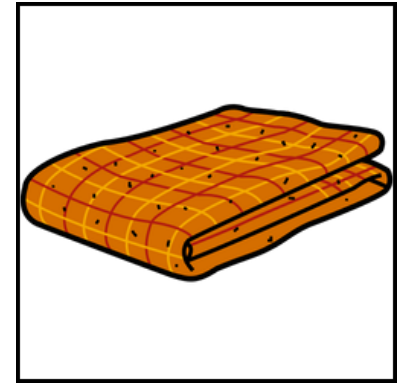
INVERNO

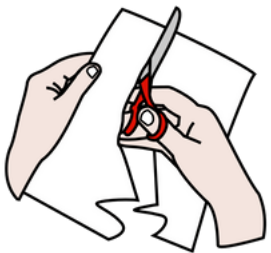
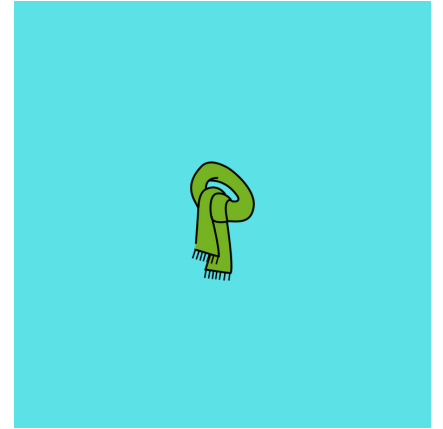
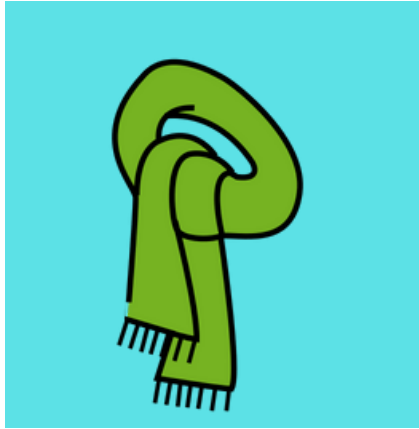
--	--	--	--	--	--	--



INVERNO









IN

VER

NO

I

N

V

E

R

N

O