



LLAVERO PARA PROFESIONALES Y SALIDAS

El documento está preparado en 4 bloques en función del uso:

- Llavero para salidas en autobús.
- Llavero para salidas caminando por el entorno.
- Llavero para tránsitos dentro del centro (alumnado de infantil) y alumnado de primaria.
- Los pictogramas están escogidos en función de las necesidades del alumnado para el que se ha elaborado.

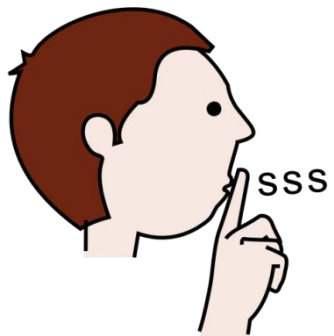
PREPARACIÓN:

- Imprime las tarjetas del bloque necesites. Puede ser opcional incorporar fotos de los profesionales al final.
- Se incluye una tarjeta en blanco para poder dibujar/pegar pictogramas necesarios y concretos para una salida.
- Recorta y plastifica dejando la pestaña lateral. Las pestañas son usadas para localizar con facilidad el pictograma
- Une con una anilla.

OBSERVACIONES:

- El llavero es para uso y apoyo de los profesionales, no para que el alumnado se comuniqué a través de él, para eso existen otras herramientas de comunicación.

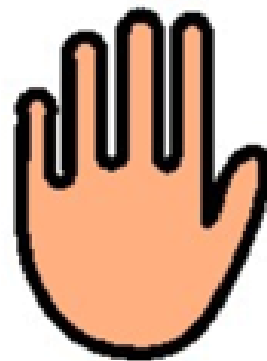
PORTACHIAVI PARTENZA AUTOBUS



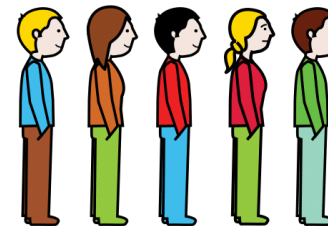
SILENZIO



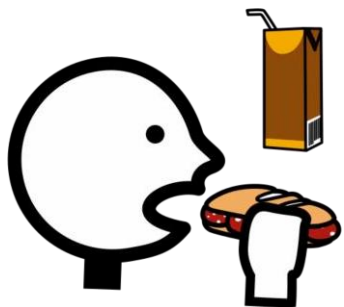
SEDUTO



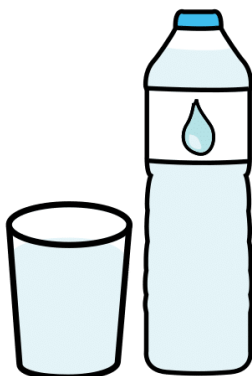
ASPETTARE



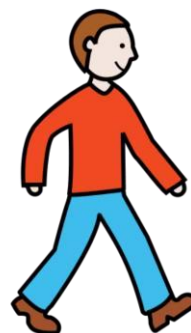
IN FILA



MERENDA



ACQUA



CAMMINARE

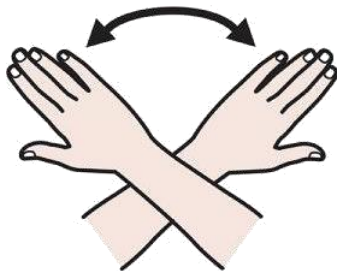


BAGNO

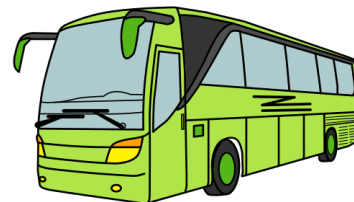




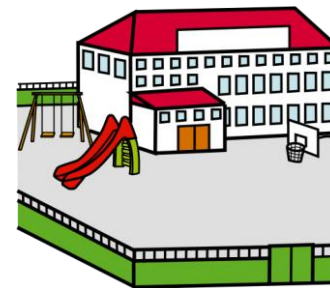
LAVARE LE MANI



FINITO



AL BUS



A SCUOLA



A CASA

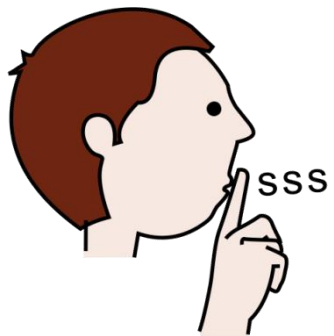


TESTO

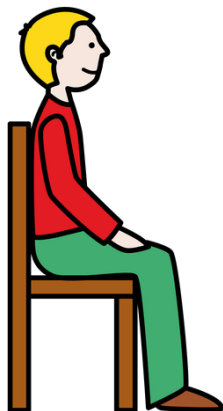


ANDIAMO
IN GITA

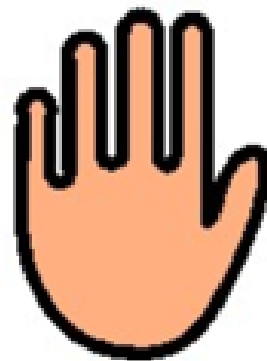
PORTACHIAVE PER PASSEGIATA



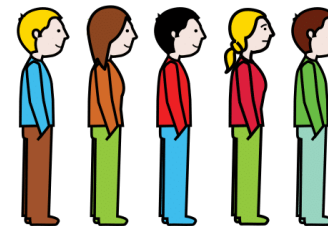
SILENZIO



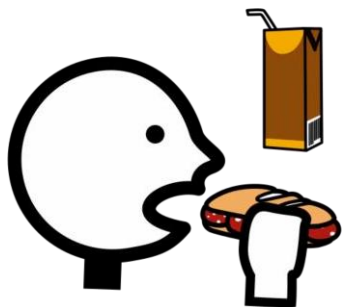
SEDUTO



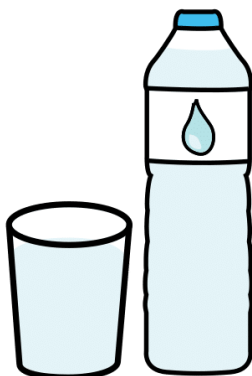
ASPETTARE



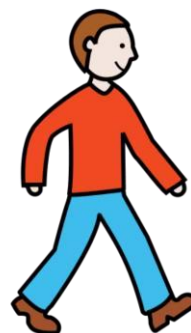
IN FILA



MERENDA



ACQUA



CAMMINARE

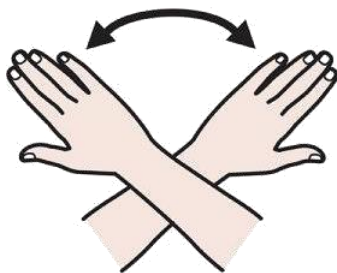


BAGNO

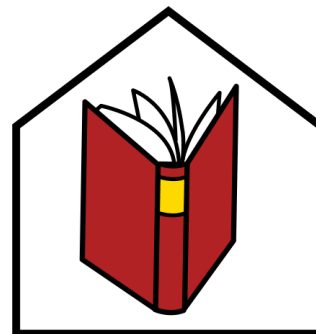




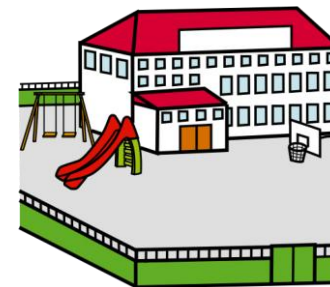
LAVARE LE MANI



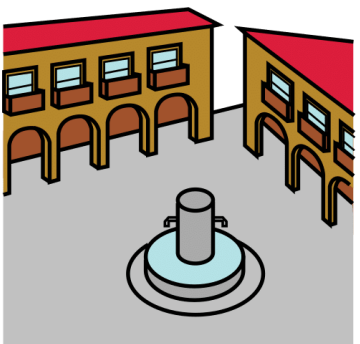
FINITO



BIBLIOTECA



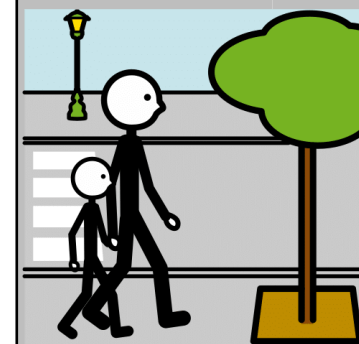
A SCUOLA



IN PIAZZA

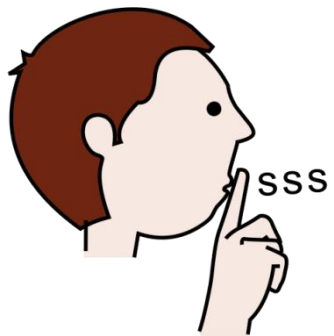


TESTO

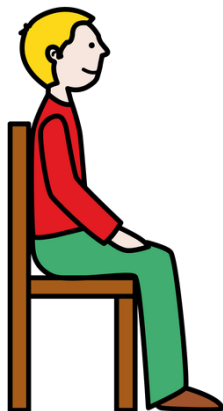


FACCIAMO UN
PASSEGGIATA

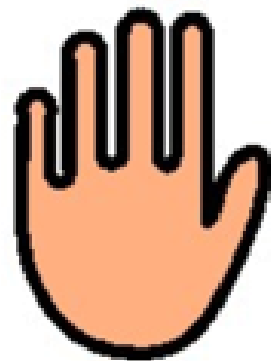
PORTACHIAVE SCUOLA INFANZIA



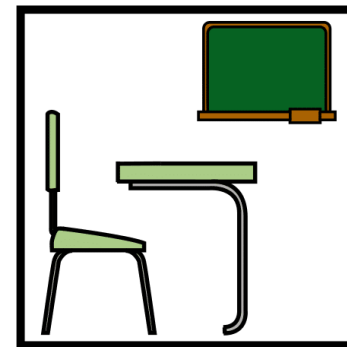
SILENZIO



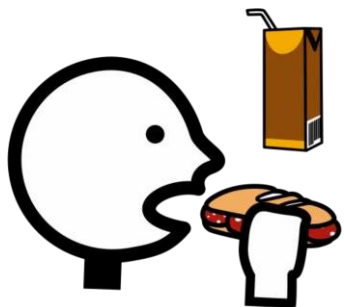
SEDUTO



ASPETTARE



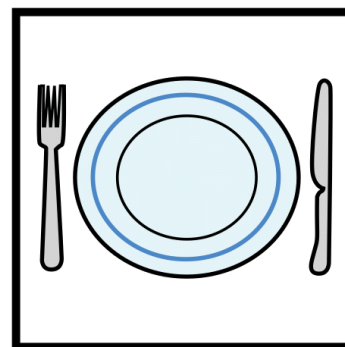
CLASSE



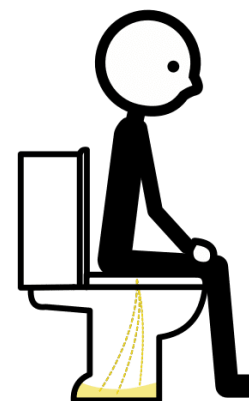
MERENDA



PARCO



PRANZO

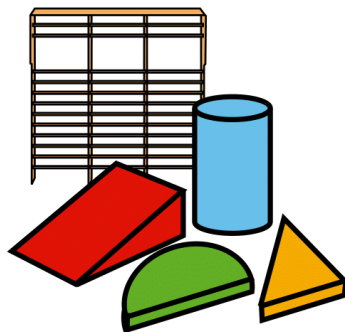


BAGNO

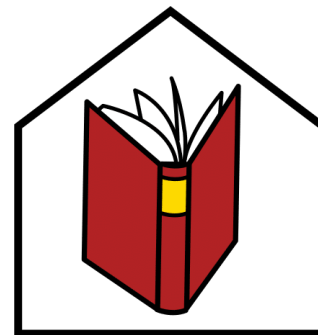




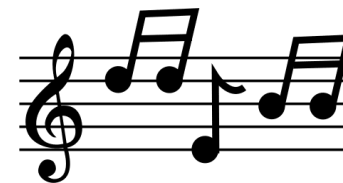
LAVARE LE MANI



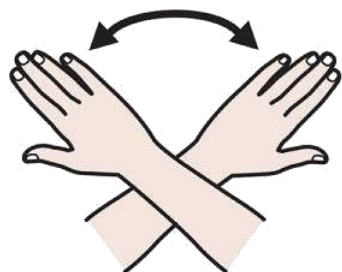
GINNASTICA



BIBLIOTECA



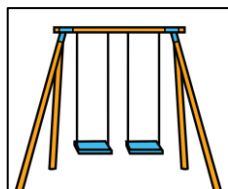
MÚSICA



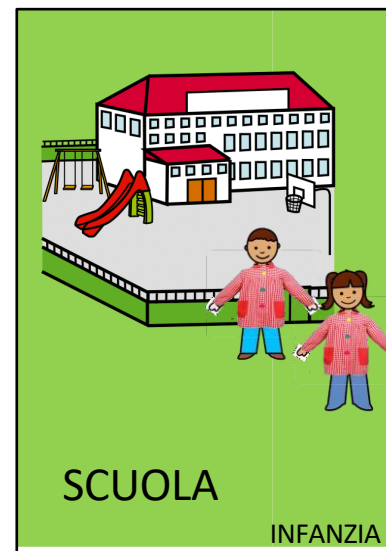
FINITO



BICI



ALTALENA



SCUOLA

INFANZIA

TEXTO

TEXTO

TEXTO

TEXTO

TEXTO

TEXTO

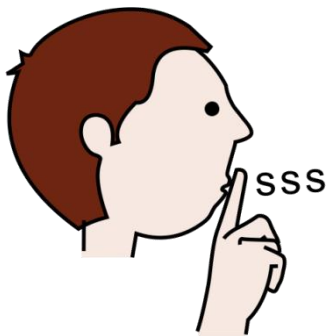
TEXTO

TEXTO

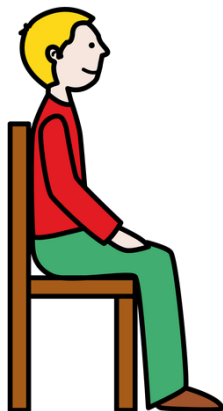
TEXTO

TEXTO

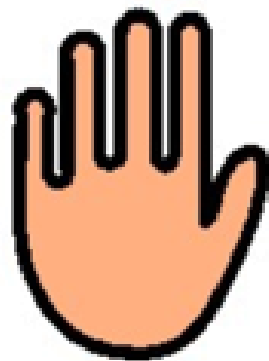
PORTACHIAVE SCUOLA PRIMARIA



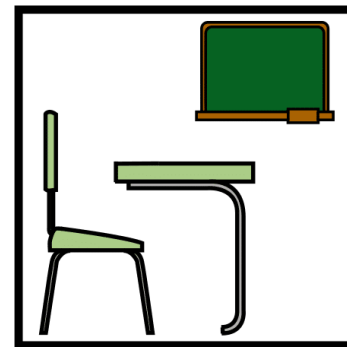
SILENZIO



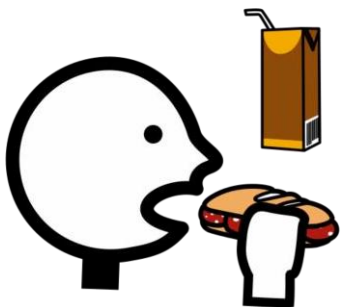
SEDUTO



ASPETTARE



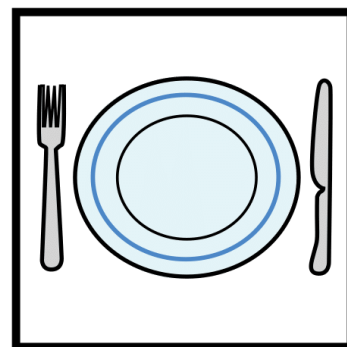
CLASSE



MERENDA



PARCO



PRANZO



BAGNO

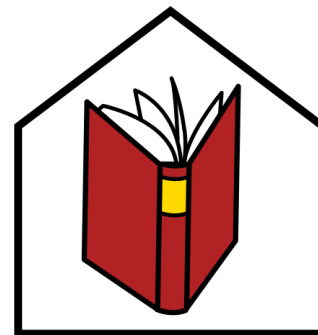




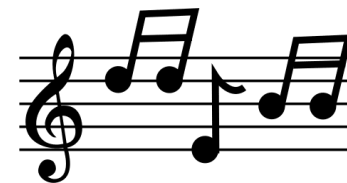
LAVARE LE MANI



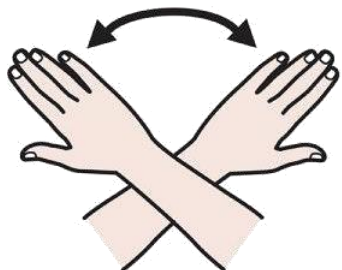
ED. FÍSICA



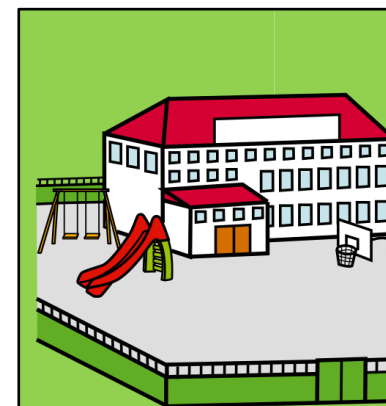
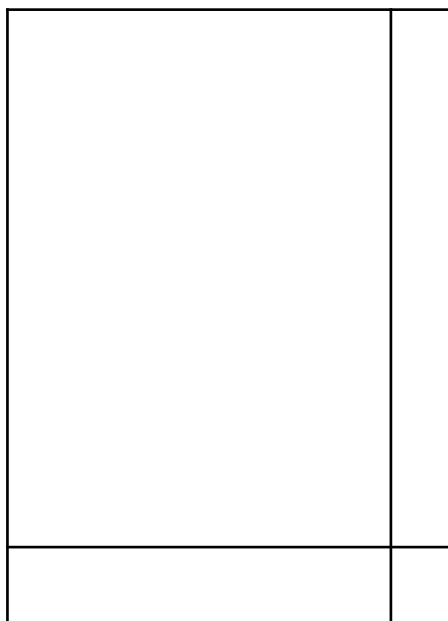
BIBLIOTECA



MÚSICA



FINE



SCUOLA

PRIMARIA

