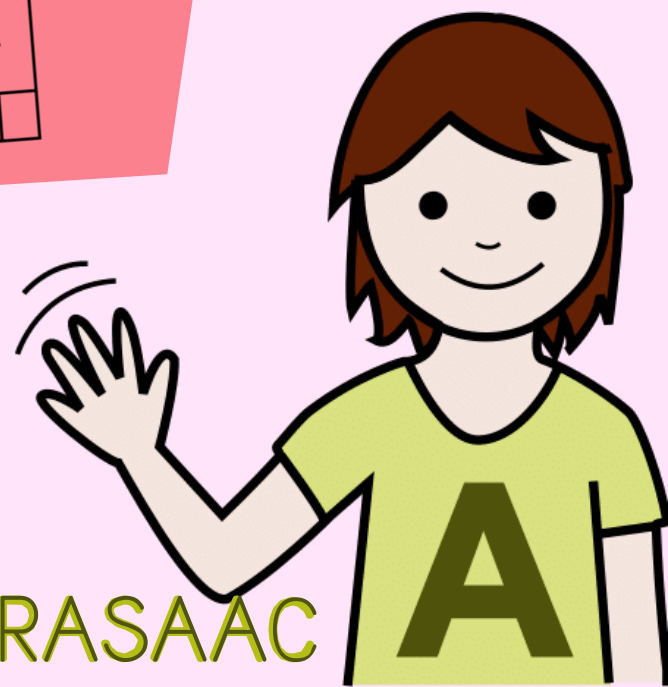
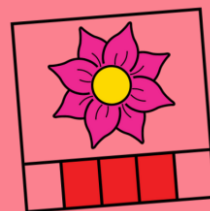


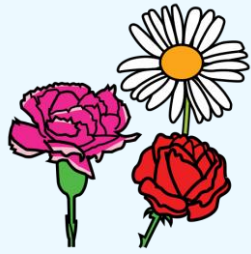


Consciência

FONOLÓGICA

Vocabulário
primavera





flor

frol

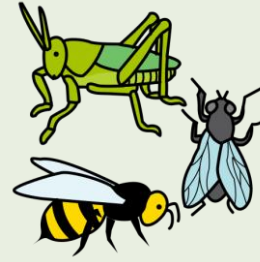
for



acro-iris

arco-iris

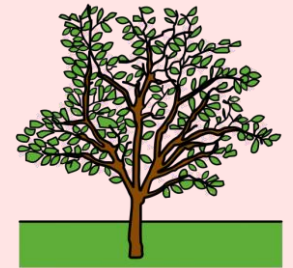
alco-iris



intescos

incetos

insetos



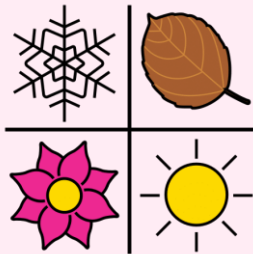
ávore

árvore

rávore



Eva Cubilla Iglesias Pictogramas ARASAAC



setação

estação

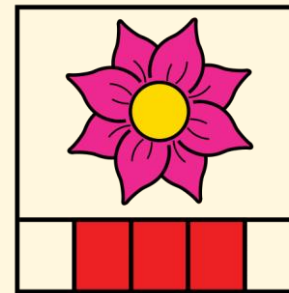
etascão



broboleta

barboleta

borboleta



privamera

primavera

pimavera



chura

lhura

ucha *va*



horta

orta

hotra



panque

parque

parce



girasol

griasol

girassol



reberto

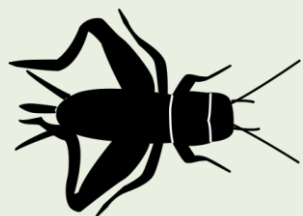
berento

rebeto



Eva Cubilla Iglesias

Pictogramas ARASAAC



trilo

crilo

grilo



passear

paresar

pasear



avelha

abelha

bealha



margarida

gamarida

maragida



Señora Eva



Pictogramas ARASAAC



Señora Eva



Pictogramas ARASAAC



Señora Eva



Pictogramas ARASAAC



Señora Eva



Pictogramas ARASAAC



Eva Cubilla Iglesias

Pictogramas ARASAAC



Señora Eva



Pictogramas ARASAAC



Señora Eva



Pictogramas ARASAAC



Señora Eva



Pictogramas ARASAAC



Señora Eva



Pictogramas ARASAAC